

YIGO, GUAM I, GUAM

# TACAN Z RWY 24R

TACAN UAM Chan 54	APCH CRS 231°	Rwy Idg TDZE Arprt Elev	10,527 617 617
----------------------	------------------	-------------------------------	----------------------

(USAF)

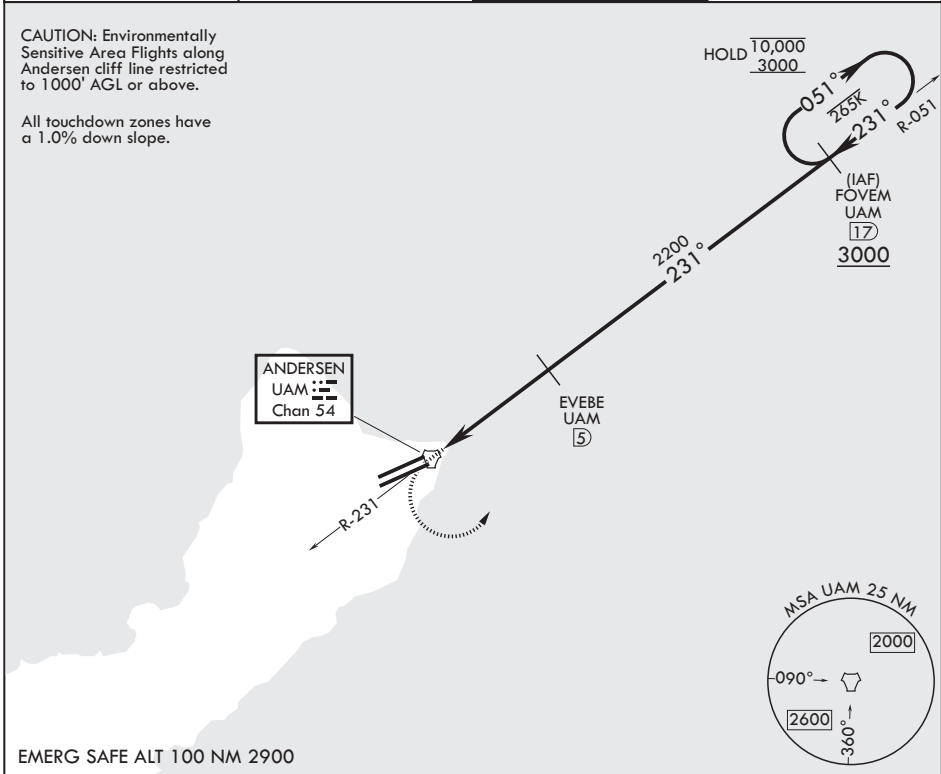
ANDERSEN AFB (PGUA)

RADAR or DME required		ALSF-1	MISSED APPROACH: Climb to 1100, then climbing left turn to 3000 to intercept UAM R-051 and hold.
<p>▼ * When ALS inop, increase CAT AB RVR to 55, vis to 1 mile; CAT CDE RVR to 50, vis to 1 mile. ** Circling not authorized NW of Rwy 06L-24R.</p>			

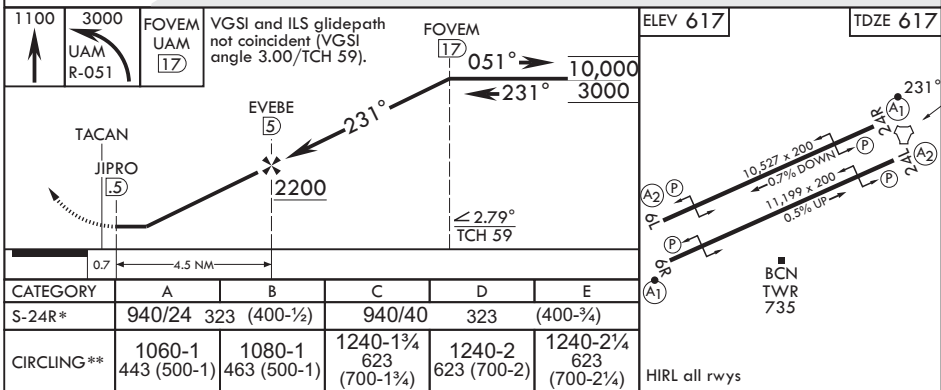
ATIS 118.175 254.325	GUAM APP CON/DEP CON 119.8 269.0	TOWER 126.2 233.7	GND CON 121.7 275.8
-------------------------	-------------------------------------	----------------------	------------------------

CAUTION: Environmentally Sensitive Area Flights along Andersen cliff line restricted to 1000' AGL or above.

All touchdown zones have a 1.0% down slope.



EMERG SAFE ALT 100 NM 2900



YIGO, GUAM I, GUAM

13°35'N - 144°56'E

ANDERSEN AFB (PGUA)

Amdt 2 17JUN21  
TERPS

# TACAN Z RWY 24R

PAC, 19 MAR 2026 to 14 MAY 2026

PAC, 19 MAR 2026 to 14 MAY 2026