

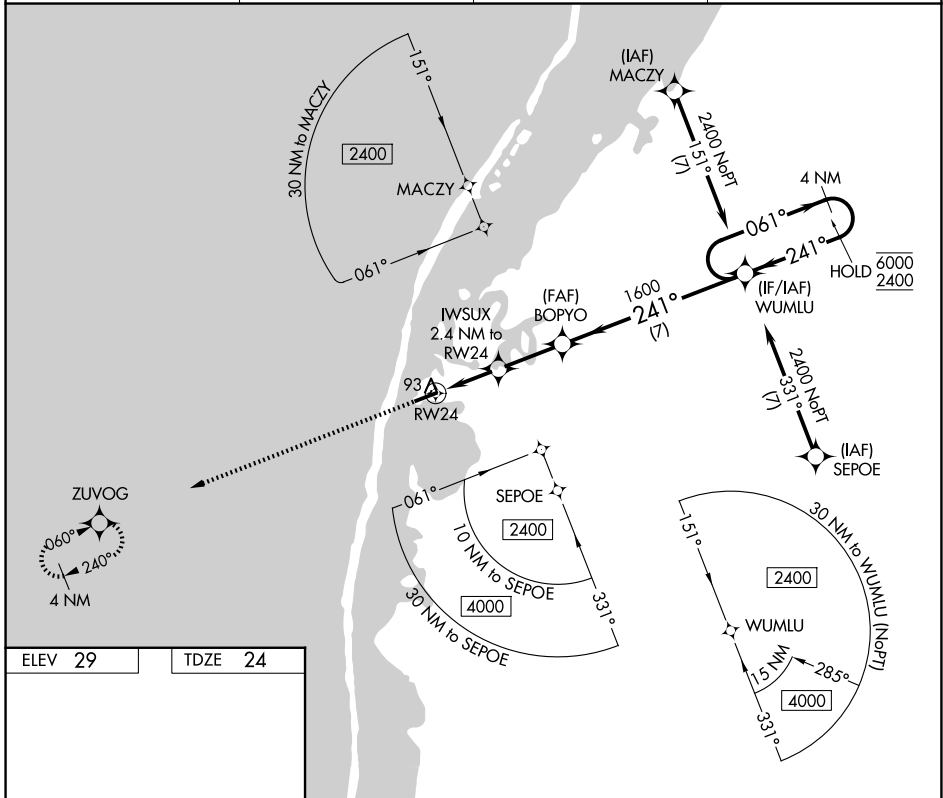
APP CRS	Rwy Ldg	4500
241°	TDZE	24
	Apt Elev	29

RNAV (GPS) RWY 24

POINT LAY LRRS (PIZ)(PPIZ)

RNP APCH - GPS.	MISSED APPROACH: Climb to 2400 direct ZUVOG and hold.
-33°C	When local altimeter setting not received, procedure NA.

AWOS-3P 135.65	ANCHORAGE CENTER 119.65 363.25	BARROW RADIO 122.4	CTAF 122.8
--------------------------	--	------------------------------	----------------------



ELEV 29	TDZE 24				
2400	ZUVOG	IWSUX 2.4 NM to RW24	BOPYO	WUMLU	4 NM Holding Pattern
1.1 NM to RW24	1.1	1.3 NM	2.5 NM	7 NM	061° → 6000 ← 241° 2400
820	1600	≤ 3.00° TCH 35			
CATEGORY	A	B	C	D	
LNAV MDA	400-1 376 (400-1)			NA	
CIRCLING	440-1 411 (500-1)	480-1 451 (500-1)	480-1½ 451 (500-1½)	NA	

POINT LAY, ALASKA
Amdt 2A 02OCT25

69°44'N-163°00'W

POINT LAY LRRS (PIZ)(PPIZ)

RNAV (GPS) RWY 24

AK, 19 MAR 2026 to 14 MAY 2026

AK, 19 MAR 2026 to 14 MAY 2026