

# NDB RWY 25

NDB/DME UTO <b>272</b>	APCH CRS <b>256°</b>	Rwy ldg TDZE Arpt Elev	<b>4100</b> <b>1161</b> <b>1261</b>
Chan <b>22 (Y)</b>			

[USAF]

INDIAN MOUNTAIN LRRS (PAIM)

▼ Night operations not authorized.

MISSED APPROACH: Climb to 5000, then climbing left turn to 6600 direct UTO NDB and hold. Continue climb climb-in-hold to 6600.

ANCHORAGE CENTER APP/DEP CON <b>124.6 352.0</b>	RCO (FAIRBANKS) <b>122.6</b>	CTAF <b>126.2</b>	AWOS-3
--	---------------------------------	----------------------	--------

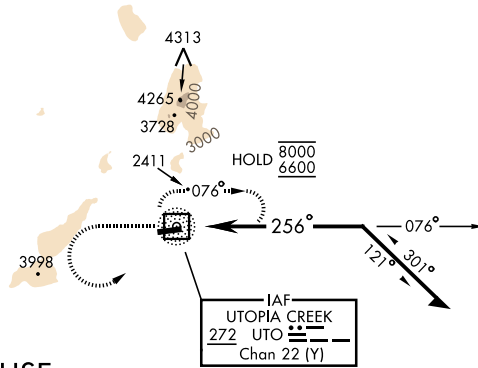
CAUTION: Rwy located on a slope of a 3415' mountain with W end at the base of cliff, APPROACH ONLY FROM THE EAST.

Successful go around improbable if initiated past MAP.

Uncontrolled Airspace below 700' AGL within 4 NM of Indian Mountain airport.

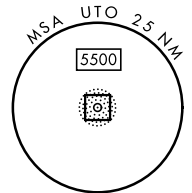
Visibility reduction by helicopters NA.

PAPI Beyond 8° right of RCL unusable.

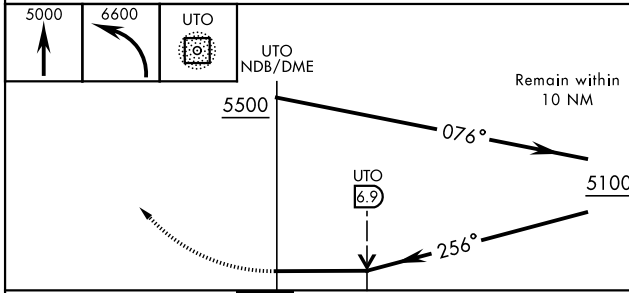


## NOT FOR CIVIL USE

## MILITARY CERTIFIED AIRCREWS or AUTHORIZED CONTRACT AIRCRAFT ONLY

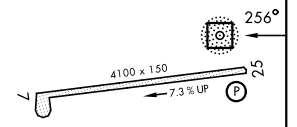


EMERG SAFE ALT 100 NM 10,100



ELEV <b>1261</b>	TDZE <b>1161</b>
------------------	------------------

Land Rwy 25  
Takeoff Rwy 7



CATEGORY	A	B	C	D
S-25	3940-1¼ 2779 (2700-1¼)	3940-1½ 2779 (2700-1½)	3940-3 2779 (2700-3)	NA
CIRCLING	NOT AUTHORIZED			

REIL Rwy 25

# NDB RWY 25

AK, 19 MAR 2026 to 14 MAY 2026

AK, 19 MAR 2026 to 14 MAY 2026