

NORTH, SOUTH CAROLINA

RNAV (GPS) RWY 6

APCH CRS 061°	Rwy Idg 9003
	TDZE 281
	Arprt Elev 321

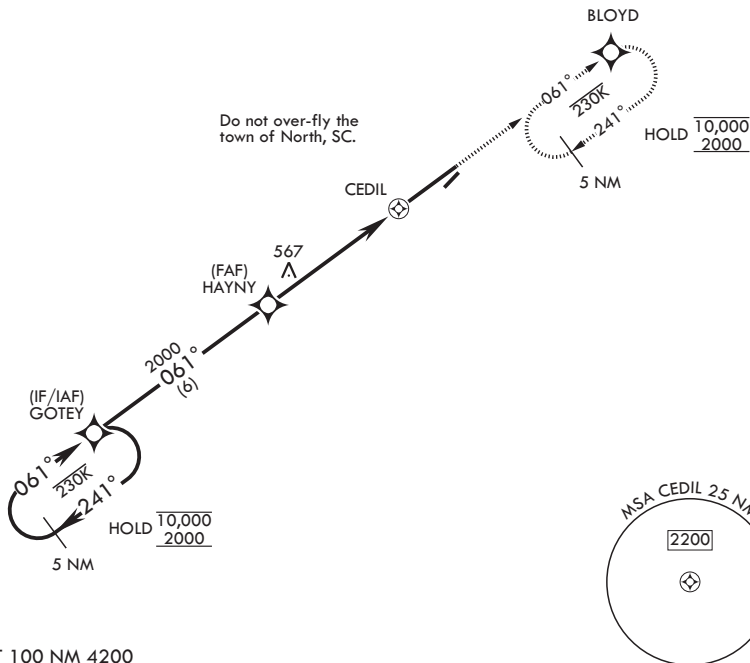
(USAF)

NORTH AF AUX (KXNO)

RNP APCH.	MISSED APPROACH: Climb to 2000 direct BLOYD and hold.
-----------	---

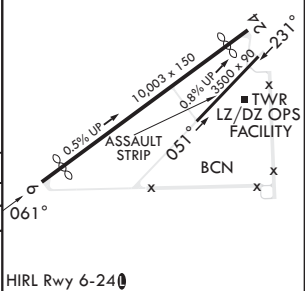
ASOS 118.525	COLUMBIA APP CON/DEP CON 124.15 338.2	LZ/DZ OPS FAC 120.475 235.775
------------------------	---	---

CAUTION: Uncontrolled airspace below 700 ft AGL.



EMERG SAFE ALT 100 NM 4200

<p>5 NM Holding Pattern</p> <p>GOTEY</p> <p>10,000 ← 241°</p> <p>2000 ← 061°</p> <p>→ 061°</p>		<p>HAYNY</p> <p>2000</p> <p>1 NM to CEDIL</p> <p>3.16° ≥ TCH 50</p> <p>4.5 NM</p> <p>0.5</p>		<p>2000 BLOYD</p> <p>ELEV 321</p> <p>See Supp for declared dist.</p> <p>TDZE 281</p>	
CATEGORY	A	B	C	D	E
LNAV MDA	880-1	599 (600-1)	880-1 ³ / ₄	599	(600-1 ³ / ₄)
CIRCLING*	940-1	619 (700-1)	940-1 ³ / ₄	619	1400-3 1079 (1100-3)
<p>HIRL Rwy 6-24</p>					



SE-2, 19 MAR 2026 to 16 APR 2026

SE-2, 19 MAR 2026 to 16 APR 2026

NORTH, SOUTH CAROLINA
Amdt 3 29DEC22

33°37'N - 81°05'W

NORTH AF AUX (KXNO)

RNAV (GPS) RWY 6