

# ILS or LOC/DME RWY 32

LOC I-UVV <b>111.7</b>	APCH CRS <b>321°</b>	Rwy Ildg THRE <b>12,001</b> 5550 Arprt Elev <b>5550</b>
---------------------------	-------------------------	---

AL-3188 [USAF]

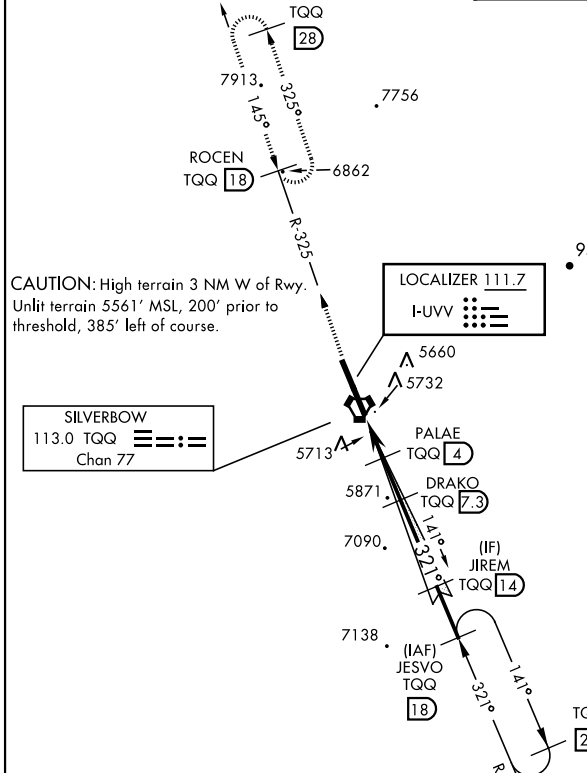
TONOPAH TEST RANGE (KTNX)

**▽** \* When ALS inop, increase CAT CDE vis to 1/4 miles.  
\*\* Circling not authorized W of Rwy 14-32



**MISSED APPROACH:** Climb to 11,000 via TQQ VORTAC R-325 to ROCEN and hold, continue climb in hold to 11,000.

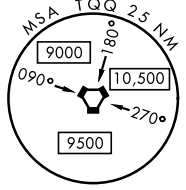
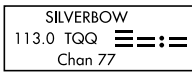
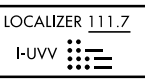
AWOS <b>113.0</b>	NELLIS CONTROL <b>119.35 254.4</b>	SILVERBOW TOWER * <b>124.75 257.95</b>	GND CON <b>127.25 335.5</b>
----------------------	---------------------------------------	---	--------------------------------



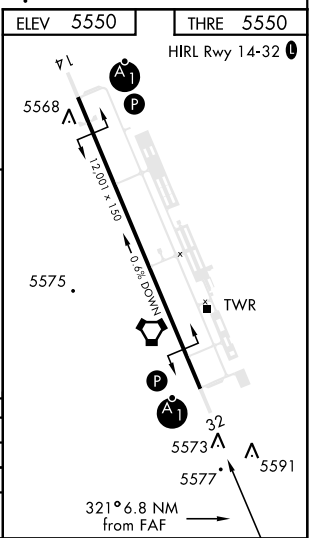
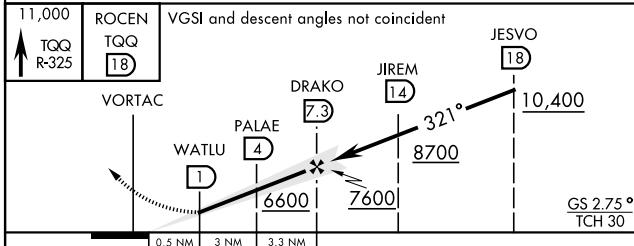
When VGSI inop, procedure NA at night.  
USAF ONLY: When VGSI inop, straight-in Rwy 32 authorized at night with MAJCOM A3 approval.

ILS Rwy 32; F-28, CV-340/440/580, B-737, C-9, DC-9, C-130, T-43, B-2, S-3 Wheel Crossing Height 15'. ILS procedure NA for Height Group 3 and 4 aircraft due to low TCH.

**CAUTION:** High terrain 3 NM W of Rwy. Unlit terrain 5561' MSL, 200' prior to threshold, 385' left of course.



EMERG SAFE ALT 100 NM 16,600



CATEGORY	A	B	C	D	E
S-ILS 32		5800-1	250 (300-1)		
S-LOC 32*		5980-1	430 (500-1)		
<b>CIRCLING</b> **	6040-1 490 (500-1)	6040-1 1/2 490 (500-1/2)	6100-2 550 (600-2)		

# ILS or LOC/DME RWY 32

SW-4, 19 MAR 2026 to 16 APR 2026

SW-4, 19 MAR 2026 to 16 APR 2026