

TONOPAHA, NEVADA

RNAV (GPS) RWY 32

APCH CRS	Rwy ldg	12,001
321°	TDZE	5550
	Arpt Elev	5550

AL-3188 [USAF]

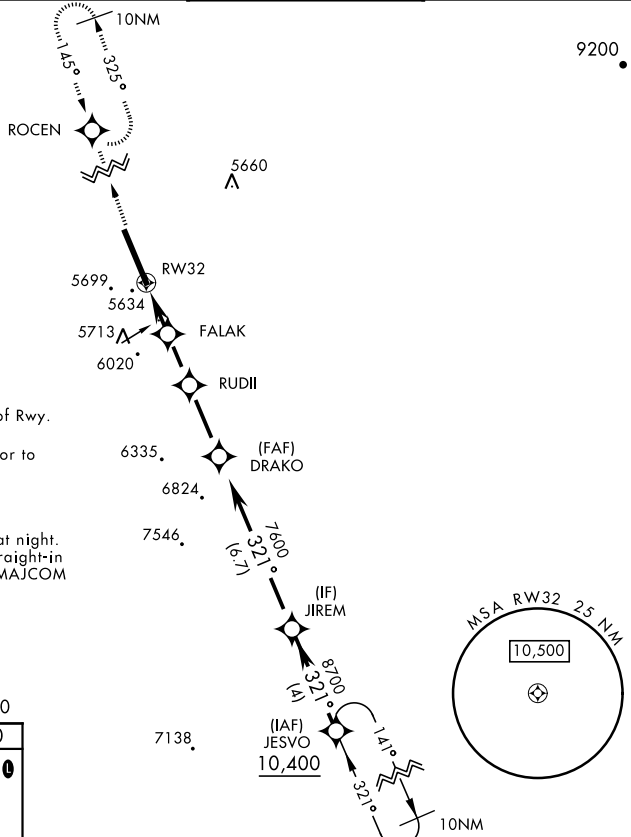
TONOPAHA TEST RANGE (KTNX)

ALSF-1 MISSED APPROACH: Climb to 11,000 direct ROCEN and hold, continue climb-in-hold to 11,000.

* When ALS inop, increase CAT CD vis to 1 1/4 miles.
 ** Circling not authorized W of Rwy 14-32.

AWOS 113.0	NELLIS CONTROL 119.35 254.4	SILVERBOW TOWER * 124.75 257.95	GND CON 127.25 335.5
----------------------	---------------------------------------	---	--------------------------------

DME/DME RNP-0.3 NA

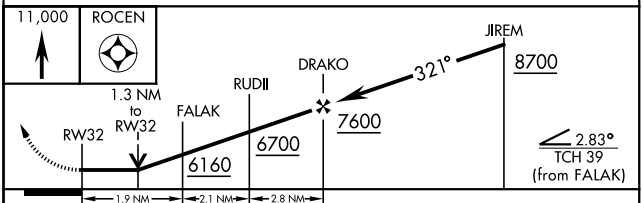
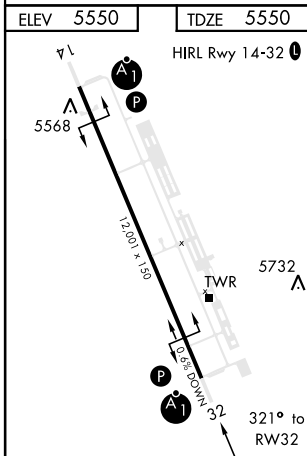


CAUTION: High terrain 3 NM W of Rwy.

Unlit terrain 5561' MSL, 200' prior to threshold, 385' left of course.

When VGSI inop, procedure NA at night.
USAF ONLY: When VGSI inop, straight-in Rwy 32 authorized at night with MAJCOM A3 approval.

EMERG SAFE ALT 100 NM 16,600



CATEGORY	A	B	C	D
LNVA MDA *	5980/24 430 (500-1/2)	5980/40 430 (500-3/4)		
CIRCLING **	6040-1 490 (500-1)	6040-1 1/2 490 (500-1/2)	6100-2 550 (600-2)	

TONOPAHA, NEVADA
Amdt 3 29MAR18

37°47'N-116°47'W

TONOPAHA TEST RANGE (KTNX)

RNAV (GPS) RWY 32

SW-4, 19 MAR 2026 to 16 APR 2026

SW-4, 19 MAR 2026 to 16 APR 2026