

SILVER ONE DEPARTURE (SILVR1 · SILVR)

TONOPAH TEST RANGE (KTNX)

AL-3188 [USAF]

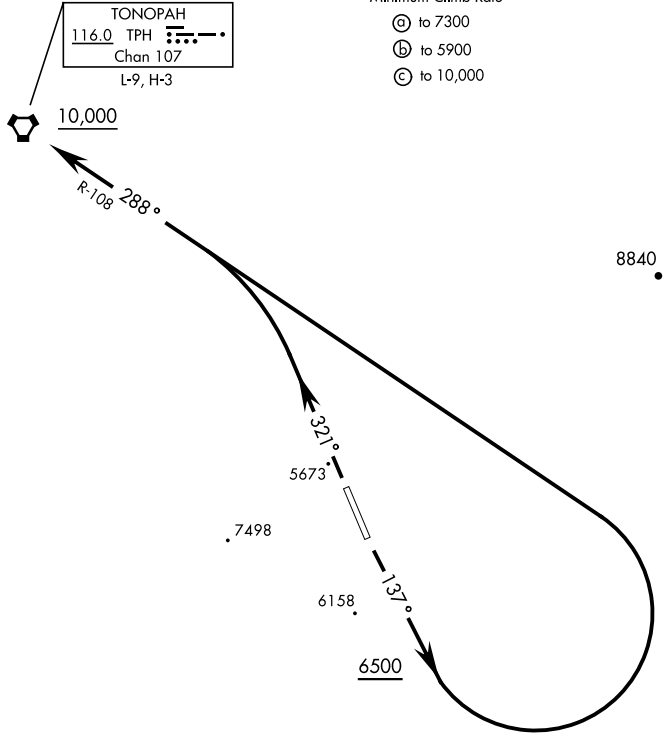
TONOPAH, NEVADA

GND CON
 127.25 335.5
 SILVERBOW TOWER ★
 124.75 257.95
 NELLIS CONTROL
 119.35 254.4

Rwy	Knots	60	120	180	240	300	360
14 (A)	V/V(fpm)	220	440	660	880	1100	1320
32 (B)	V/V(fpm)	260	520	780	1040	1300	1560
32 (C)	V/V(fpm)	261	522	783	1044	1305	1566

Minimum Climb Rate

- (A) to 7300
- (B) to 5900
- (C) to 10,000



DEPARTURE ROUTE DESCRIPTION

TAKEOFF RWY 14: Climb heading 137°, when leaving 6500 turn left direct TPH VORTAC. Cross TPH at or above 10,000.

TAKEOFF RWY 32: Climb heading 321° to intercept TPH VORTAC R-108 direct TPH. Cross TPH at or above 10,000.

SILVER ONE DEPARTURE (SILVR1 · SILVR)

Orig 24MAR22

TONOPAH, NEVADA

TONOPAH TEST RANGE (KTNX)

SW-4, 19 MAR 2026 to 16 APR 2026

SW-4, 19 MAR 2026 to 16 APR 2026