

VOR/DME Z RWY 32

VORTAC TQQ 113.0 Chan 77	APCH CRS 314°	Rwy Idg THRE: 12,001 5550 Arpt Elev 5550
--	-------------------------	---

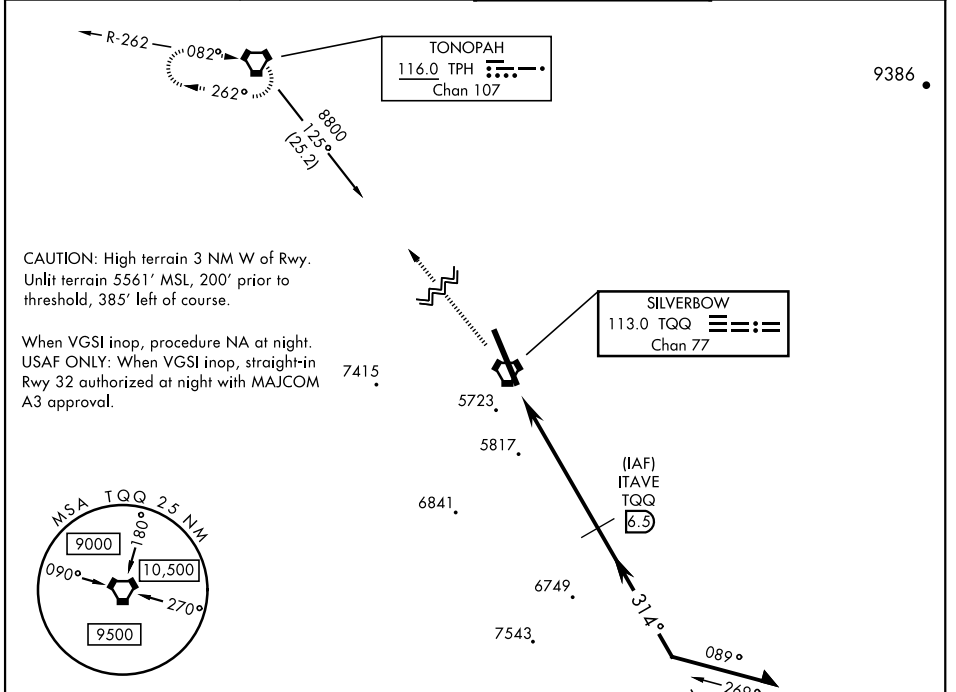
AL-3188 [USAF]

TONOPAH TEST RANGE (KTNX)

*Circling not authorized W of Rwy 14-32.

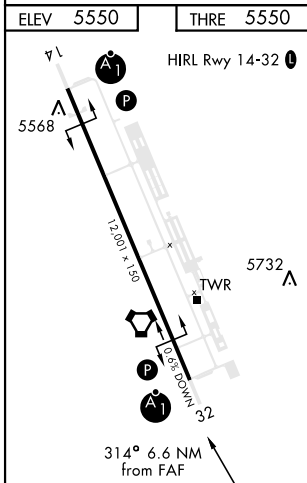
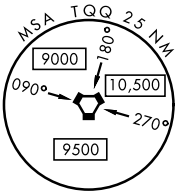
 MISSED APPROACH: Climb to 11,000 direct to TPH VORTAC and hold. Continue climb in holding to 11,000.

AWOS 113.0	NELLIS CONTROL 119.35 254.4	SILVERBOW TOWER* 124.75 257.95 0	GND CON 127.25 335.5
----------------------	---------------------------------------	--	--------------------------------

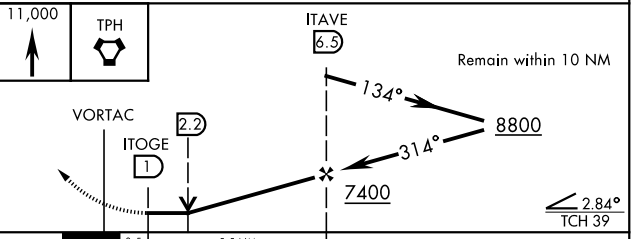


CAUTION: High terrain 3 NM W of Rwy. Unlit terrain 5561' MSL, 200' prior to threshold, 385' left of course.

When VGSI inop, procedure NA at night. USAF ONLY: When VGSI inop, straight-in Rwy 32 authorized at night with MAJCOM A3 approval.



EMERG SAFE ALT 100 NM 16,600 FROM TQQ



CATEGORY	A	B	C	D	E
S-32	6080/24 530 (600-1/2)		6080/55 530 (600-1/2)	NOT AUTHORIZED	
CIRCLING*	6080-1 530 (600-1)		6080-1 1/2 530 (600-1/2)	NOT AUTHORIZED	

VOR/DME Z RWY 32

SW-4, 19 MAR 2026 to 16 APR 2026

SW-4, 19 MAR 2026 to 16 APR 2026