

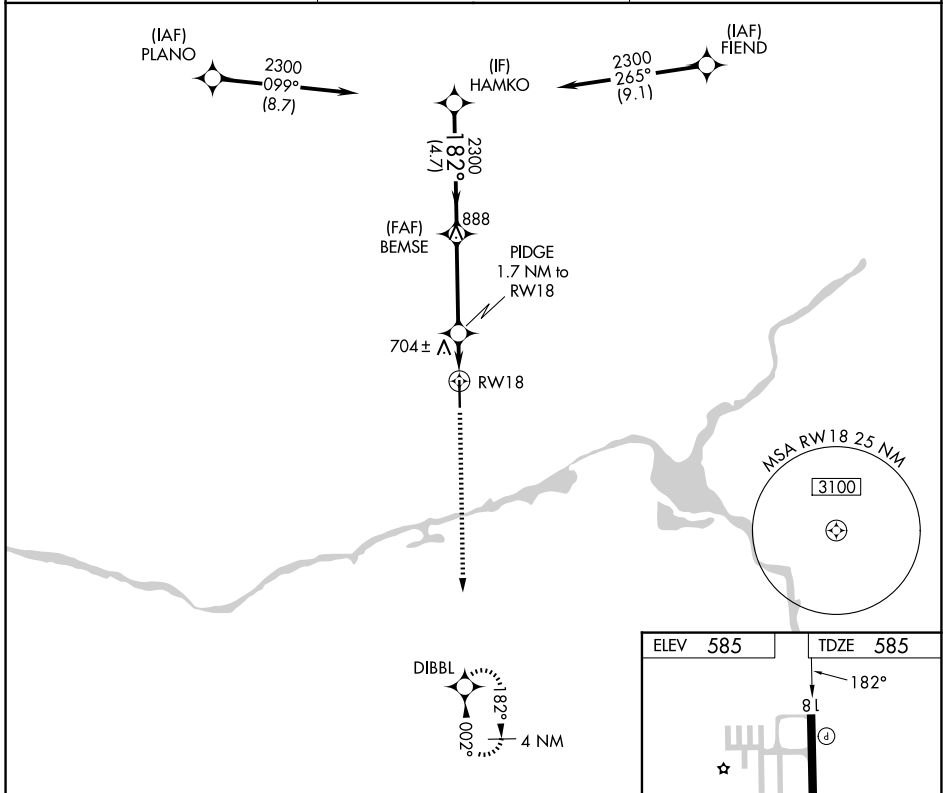
APP CRS	Rwy Ldg	5501
182°	TDZE	585
	Apt Elev	585

RNAV (GPS) RWY 18

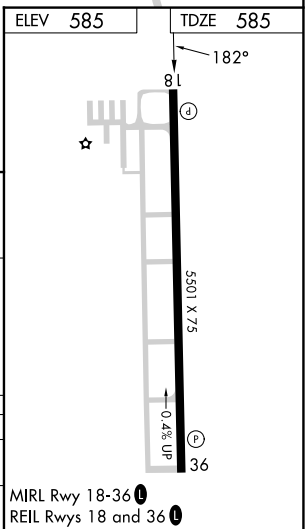
MORRIS MUNI/JAMES R WASHBURN FLD (C09)

RNP APCH - GPS.	<p>▼ Rwy 18 helicopter visibility reduction below 3/4 SM NA. VDP NA when using JOT altimeter setting. When local altimeter setting not received, use JOT altimeter setting and increase all MDAs 40 feet and LNAV visibility Cat C 1/2 SM.</p> <p>▲</p>	MISSED APPROACH: Climb to 2200 direct DIBBL and hold.
-----------------	---	---

AWOS-3 118.175	CHICAGO APP CON 119.35 354.075	UNICOM 122.8 (CTAF) 0
--------------------------	--	---------------------------------



	HAMKO		BEMSE		PIDGE 1.7 NM to RWY 18		2200	DIBBL
	2300		2300		1160		↑	✦
	182°		3.00° TCH 44		1 NM to RWY 18			
	4.7 NM		3.6 NM		0.7 NM			
CATEGORY	A		B		C		D	
LNAV MDA	960-1		375 (400-1)		NA		NA	
CIRCLING	1020-1 435 (500-1)		1140-1 555 (600-1)		1140-1½ 555 (600-1½)		NA	



EC-3, 19 MAR 2026 to 16 APR 2026

EC-3, 19 MAR 2026 to 16 APR 2026