

MINOT, NORTH DAKOTA

COPTER RNAV (GPS) RWY 30

| | | |
|--------------------------|------------------|--------------------|
| WAAS CH 91355 W30A | APCH CRS 298° | Rwy ldg 13,198 |
| | | TDZE 1646 |
| | | Arprt Elev 1666 |

AL-5013 (USAF)

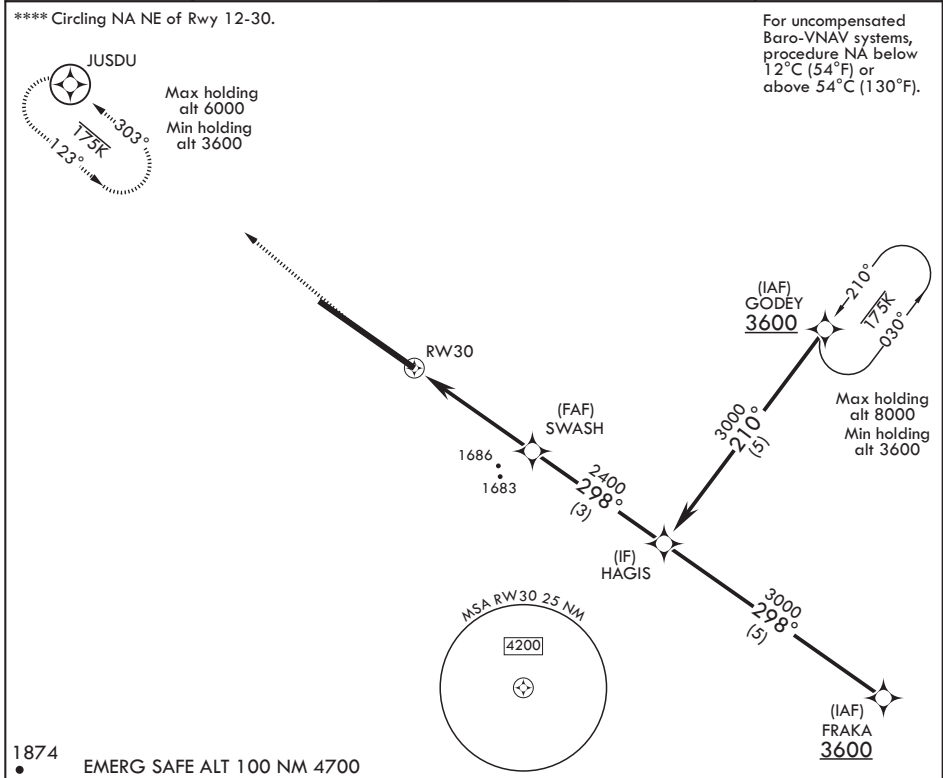
MINOT AFB (KMIB)

* When ALS inop, increase CAT A RVR to 40, vis to 3/4 mile.
 ** When ALS inop, increase CAT A vis to 1 5/8 miles.
 *** When ALS inop, increase CAT A RVR to 55, vis to 1 mile.

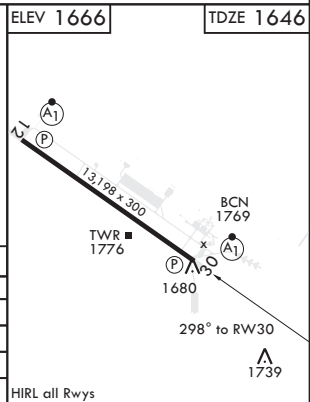
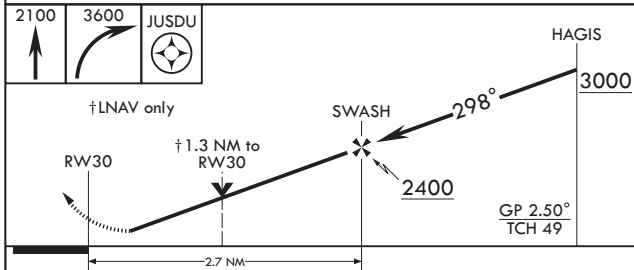


MISSED APPROACH: Climb to 2100 then climbing right turn to 3600 direct JUSDU and hold, continue climb-in-hold to 3600.

| | | | | |
|-----------------|------------------------|-------------------------|------------------------|-------------------|
| ATIS * 278.8 | APP CON 119.6 363.8 | TOWER * 120.65 253.5 | GND CON 134.0 275.8 | CLNC DEL 326.2 |
|-----------------|------------------------|-------------------------|------------------------|-------------------|



1874
EMERG SAFE ALT 100 NM 4700



| CATEGORY | COPTER | |
|-----------------------|---------|-----------------|
| LPV DA* | 1846/24 | 200 (200-1/4) |
| RNAV/VNAV DA** | 2040/60 | 394 (400-1 1/2) |
| RNAV MDA*** | 2040/24 | 394 (400-1/2) |
| C CIRCLING**** | 2120-1 | 454 (500-1) |

HIRL all Rwy's

MINOT, NORTH DAKOTA

48°25'N - 101°21'W

MINOT AFB (KMIB)

Orig 19JUL18

COPTER RNAV (GPS) RWY 30

NC-1, 19 MAR 2026 to 16 APR 2026

NC-1, 19 MAR 2026 to 16 APR 2026