

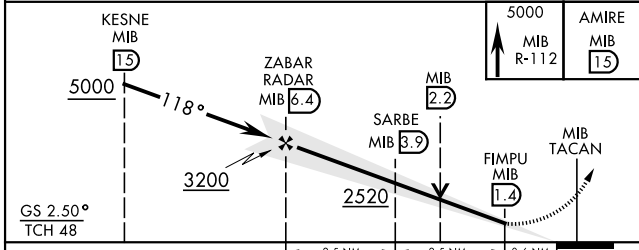
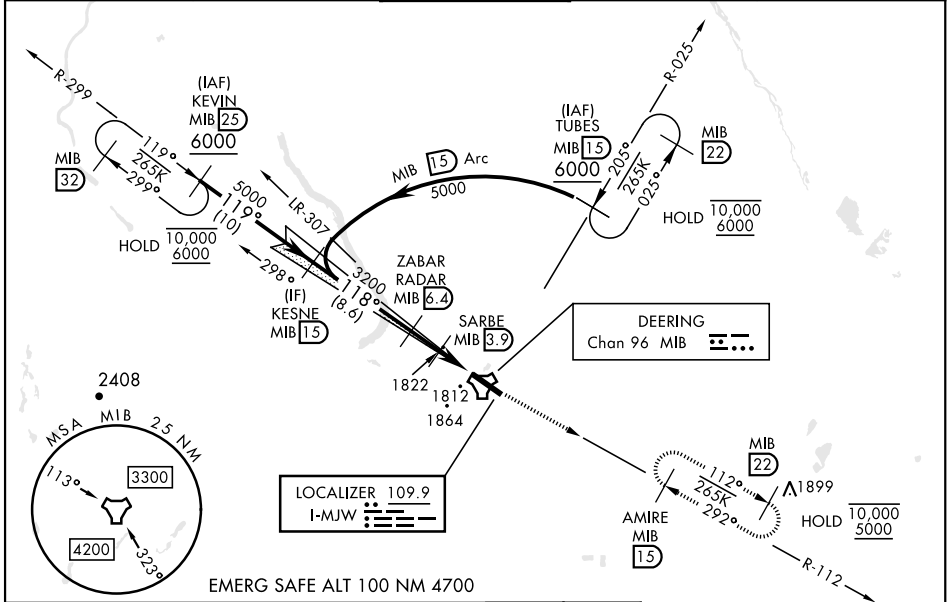
ILS or LOC Y RWY 12

LOC I-MJW 109.9	APCH CRS 118°	Rwy Idg 13,198 TDZE 1666 Arprt Elev 1666
---------------------------	-------------------------	---

[USAF]

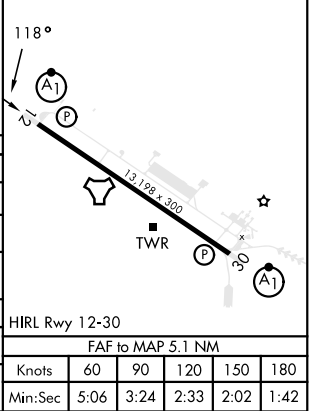
MINOT AFB (KMIB)

RADAR or DME required.				
* When ALS inop, increase RVR to 40 and vis to 3/4 mile. ** When ALS inop, increase CAT AB RVR to 55 and vis to 1 mile; CAT CDE RVR to 60, vis to 1 1/2 miles. *** When ALS inop, increase CAT AB RVR to 55, vis to 1 mile, CAT CDE vis to 1 1/2 miles. **** Circling not authorized N of Rwy 12-30.			ALSF-1 	
MISSED APPROACH: Climb to 5000 via MIB TACAN R-112 direct AMIRE and hold.				
ATIS 278.8	MINOT APP CON 119.6 363.8	MINOT TOWER 120.65 253.5	GND CON 134.0 275.8	CLNC DEL 326.2



ELEV	1666	TDZE	1666
------	------	------	------

CATEGORY	A	B	C	D	E
S-ILS 12*	1866/24		200	(200-1/2)	
S-LOC 12**	2080/24	414 (500-1/2)	2080/40	414	(500-3/4)
CIRCLING****	2120-1	2140-1	2180-1 1/2	2320-2	2320-2 1/4
	454 (500-1)	474 (500-1)	514 (600-1 1/2)	654 (700-2)	654 (700-2 1/4)
LOCAL ALTIMETER WITHOUT LAST STEPOUND FIX					
S-LOC 12***	2200/24	534 (600-1/2)	2200/55	534	(600-1)
CIRCLING****	2200-1	534 (600-1)	2200-1 1/2	2320-2	2320-2 1/4
			534 (600-1 1/2)	654 (700-2)	654 (700-2 1/4)



ILS or LOC Y RWY 12

NC-1, 19 MAR 2026 to 16 APR 2026

NC-1, 19 MAR 2026 to 16 APR 2026