

MINOT, NORTH DAKOTA

RNAV (GPS) Y RWY 30

WAAS CH 47084 W30B	APCH CRS 298°	Rwy ldg TDZE 13,198 1646	Arprt Elev 1666
--------------------------	------------------	--------------------------------	--------------------

(-USAF)

MINOT AFB (KMIB)

RNP APCH - GPS

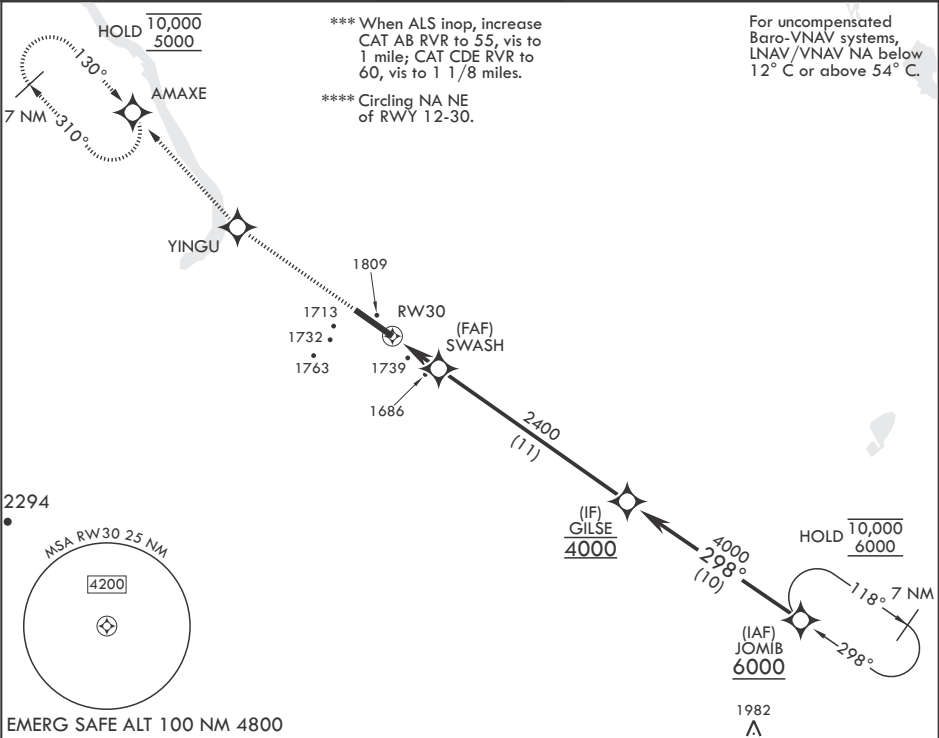
ALSIF-1

MISSED APPROACH: Climb to 5000 direct YINGU, track 310° to AMAXE and hold.

* When ALS inop, increase RVR to 40, vis to 3/4 mile.
 ** When ALS inop, increase RVR to 60, vis to 1 1/8 miles.



ATIS* 278.8	APP CON 119.6 363.8	TOWER* 120.65 253.5	GND CON 134.0 275.8	CLNC DEL 326.2
----------------	------------------------	------------------------	------------------------	-------------------

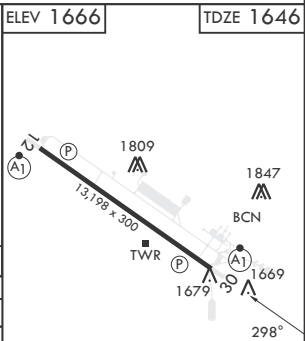
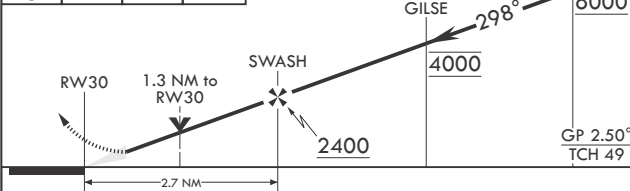


For uncompensated Baro-VNAV systems, LNAV/VNAV NA below 12° C or above 54° C.

NC-1, 19 MAR 2026 to 16 APR 2026

NC-1, 19 MAR 2026 to 16 APR 2026

EMERG SAFE ALT 100 NM 4800



CATEGORY	A	B	C	D	E
LPV DA*	1846/24		200	(200-1/2)	
LNAV/VNAV DA**	2027/35		381	(400-5/8)	
LNAV MDA***	2040/24	394 (400-1/2)	2040/40	394	(400-3/4)
C CIRCLING****	2120-1 454 (500-1)	2140-1 474 (500-1)	2180-1 1/2 514 (600-1 1/2)	2320-2 654 (700-2)	2320-2 1/4 654 (700-2 1/4)

HIRL all Rwys

MINOT, NORTH DAKOTA

48°25'N - 101°21'W

MINOT AFB (KMIB)

Orig 15JUN23

RNAV (GPS) Y RWY 30