

# TACAN Y RWY 30

TACAN MIB Chan <b>96</b>	APCH CRS <b>292°</b>	Rwy Idg <b>13,198</b> TDZE <b>1646</b> Arprt Elev <b>1666</b>
-----------------------------	-------------------------	---

[USAF]

MINOT AFB (KMIB)

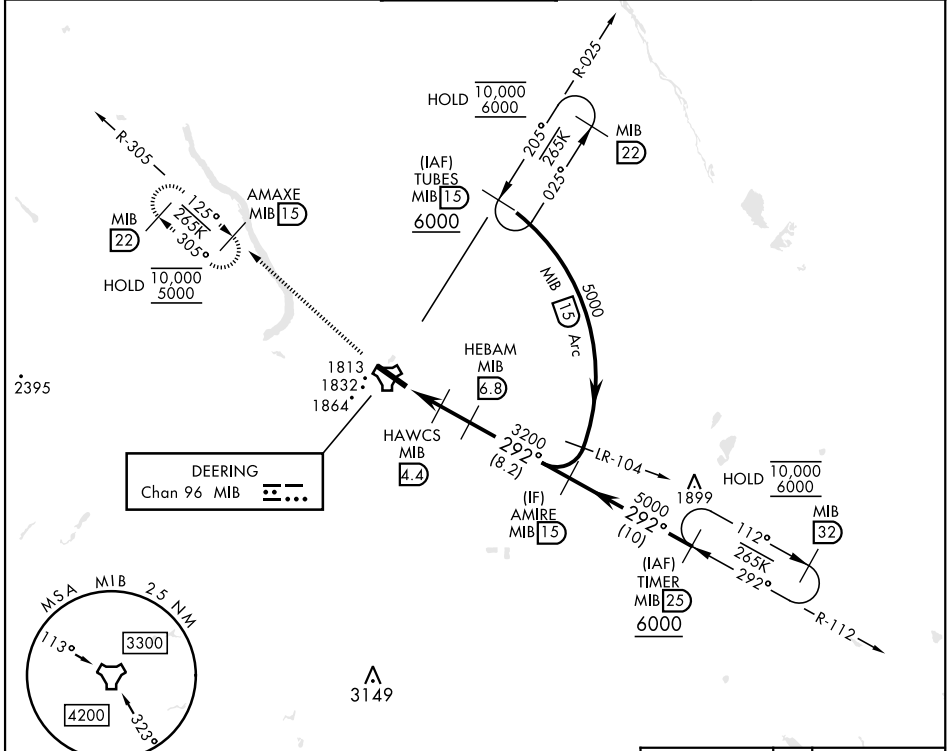
\* When ALS inop, increase CAT AB RVR to 55, vis to 1 mile;  
CAT CDE vis to 1 3/8 miles.

\*\* Circling not authorized N of Rwy 12-30



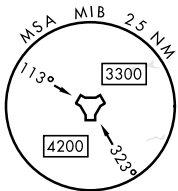
MISSED APPROACH: Climb to 5000 via  
MIB TACAN R-305 direct AMAXE and hold.

ATIS ★ <b>278.8</b>	MINOT APP CON <b>119.6 363.8</b>	MINOT TOWER ★ <b>120.65 253.5</b>	GND CON <b>134.0 275.8</b>	CLNC DEL <b>326.2</b>
------------------------	-------------------------------------	--------------------------------------	-------------------------------	--------------------------

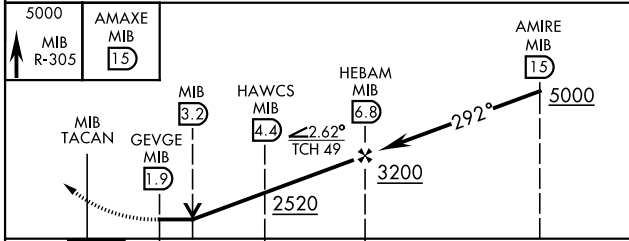


NC-1, 19 MAR 2026 to 16 APR 2026

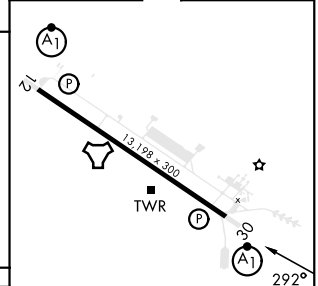
NC-1, 19 MAR 2026 to 16 APR 2026



EMERG SAFE ALT 100 NM 4700



ELEV 1666	TDZE 1646
-----------	-----------



CATEGORY	A	B	C	D	E
S-30 *	2100/24 454 (500-1/2)		2100/45 454 (500-7/8)		
CIRCLING **	2120-1 454 (500-1)	2140-1 474 (500-1)	2180-1 1/2 514 (600-1 1/2)	2320-2 654 (700-2)	2320-2 1/4 654 (700-2 1/4)

HIRL Rwy 12-30

# TACAN Y RWY 30