

LOC I-ESF 111.5 Chan 52	APP CRS 270°	Rwy Ldg TDZE Apt Elev	5998 92 112
---	------------------------	-----------------------------	--

ILS or LOC/DME RWY 27

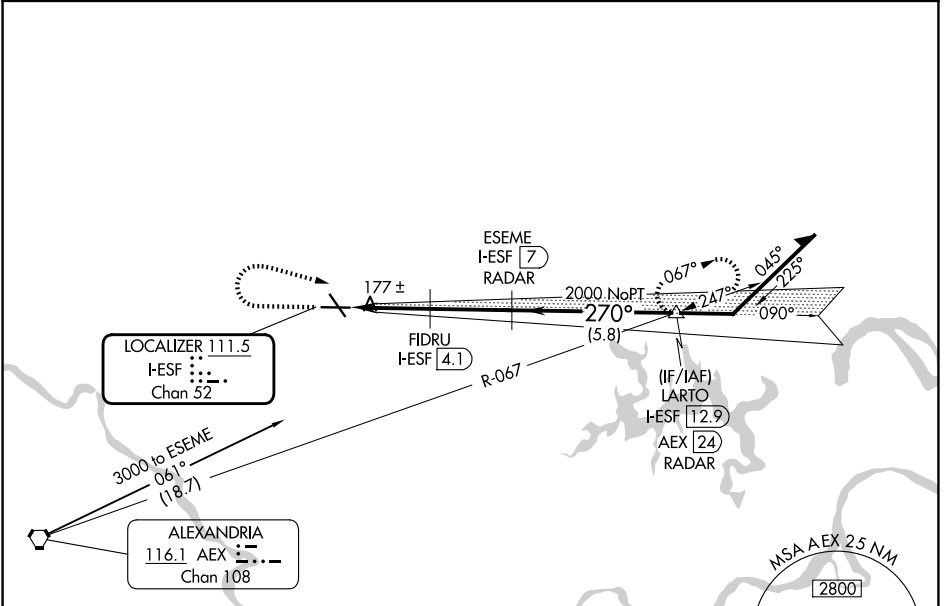
ESLER RGNL (E/SF)

RADAR or DME required.

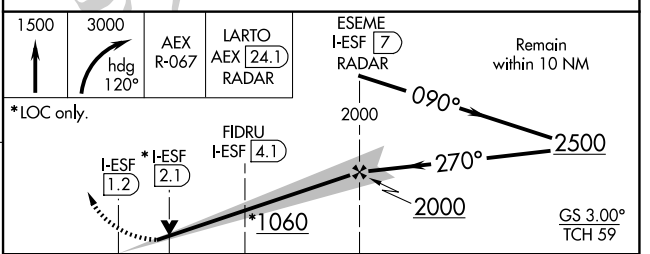
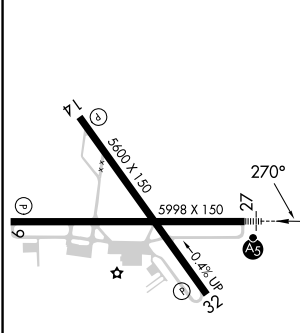
NA Circling Rwy 14, 32 NA at night. VDP NA with Alexandria Intl altimeter setting. When local altimeter not received, use Alexandria Intl altimeter setting and increase DA to 327 feet; increase all MDA to 40 feet and Circling visibility Cat D ¼ SM. For inop MALSRS, increase S-LOC 27 Cat C/D visibility to 1 SM.

MALSRS MISSED APPROACH: Climb to 1500 then climbing right turn to 3000 on heading 120° and on AEX VORTAC R-067 to LARTO/AEX 24.1 DME/RADAR and hold.

ESF ASOS 119.425	MAKS APP CON 125.4 254.8	UNICOM 122.8 (CTAF) 1
----------------------------	------------------------------------	--



ELEV 112	TDZE 92
----------	---------



CATEGORY	A	B	C	D
S-ILS 27	292-½ 200 (200-½)			
S-LOC 27	440-½ 348 (400-½)	440-⅝ 348 (400-⅝)		
CIRCLING	600-1 488 (500-1)	740-¾ 628 (700-¾)	760-2 648 (700-2)	

REIL Rws 9, 14 and 32 **1**
MIRL Rwy 14-32 **1**
HIRL Rwy 9-27 **1**

SC-4, 19 MAR 2026 to 16 APR 2026

SC-4, 19 MAR 2026 to 16 APR 2026