

LOC/DME I-CRP <b>110.3</b> Chan <b>40</b>	APP CRS <b>132°</b>	Rwy Ldg <b>7510</b> TDZE <b>46</b> Apt Elev <b>46</b>
---	------------------------	---

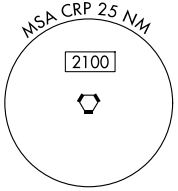
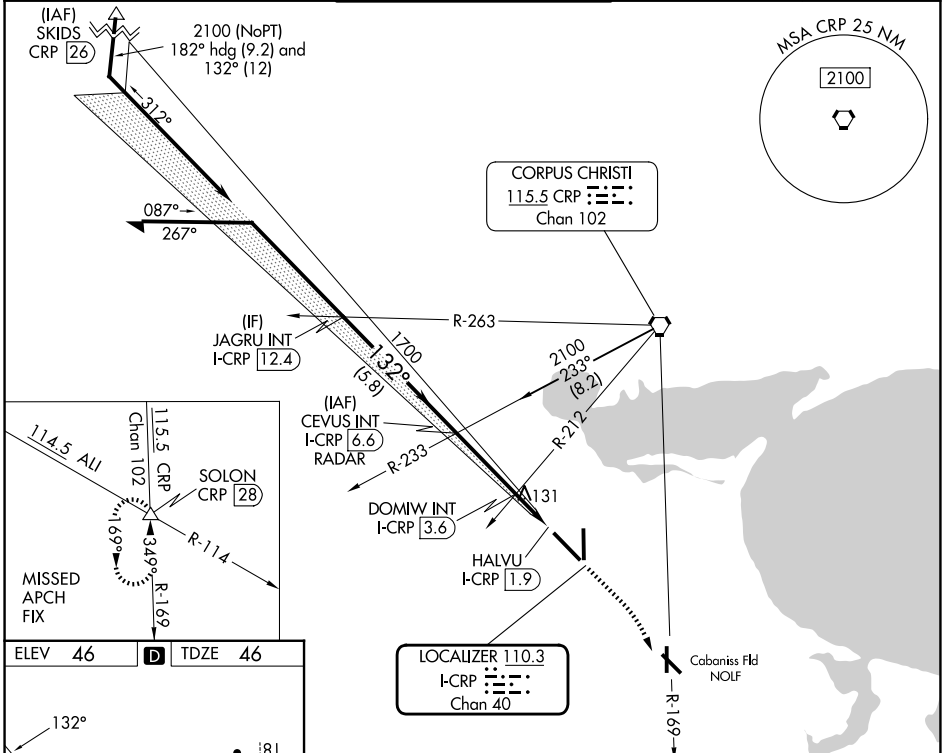
# ILS or LOC RWY 13

CORPUS CHRISTI INTL (CRP)

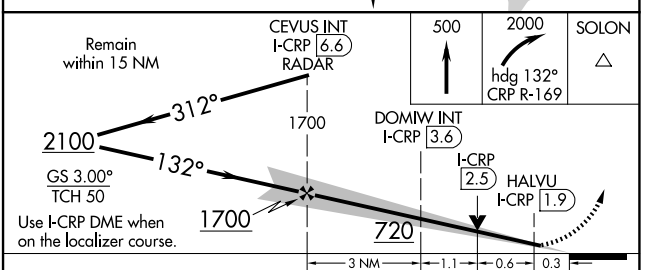
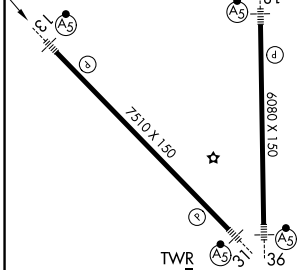
⚠ Autopilot coupled approach NA below 260.  
 For inop ALS, increase S-ILS 13 Cat E visibility to RVR 4000 and S-LOC 13 Cats C, D, and E visibility to RVR 5500.  
 \*RVR 1800 authorized with use of FD or AP or HUD to DA.

MALSR MISSED APPROACH: Climb to 500 then climbing right turn to 2000 on heading 132° and CRP VORTAC R-169 to SOLON INT/CRP VORTAC 28 DME and hold.

ATIS <b>126.8</b>	CORPUS APP CON <b>120.9 348.725</b>	CORPUS TOWER <b>119.4 257.8</b>	GND CON <b>121.9 269.15</b>	CLNC DEL <b>118.55</b>
----------------------	--	------------------------------------	--------------------------------	---------------------------



ELEV 46	<b>D</b>	TDZE 46
---------	----------	---------



CATEGORY	A	B	C	D	E
S-ILS 13*	246/24 200 (200-½)				
S-LOC 13	400/24	354 (400-½)	400/30 354 (400-¾)		
CIRCLING	500-1 454 (500-1)	780-1 734 (800-1)	820-2¼ 774 (800-2¼)	820-2½ 774 (800-2½)	820-2¾ 774 (800-2¾)

CORPUS CHRISTI, TEXAS  
 Amdt 28B 02NOV23

27°46'N-97°30'W

# CORPUS CHRISTI INTL (CRP)

## ILS or LOC RWY 13

SC-3, 19 MAR 2026 to 16 APR 2026

SC-3, 19 MAR 2026 to 16 APR 2026