


APP CRS <b>132°</b>	Rwy Ldg TDZE Apt Elev	<b>7510</b> <b>46</b> <b>46</b>
------------------------	-----------------------------	---------------------------------------

# RNAV (RNP) Z RWY 13

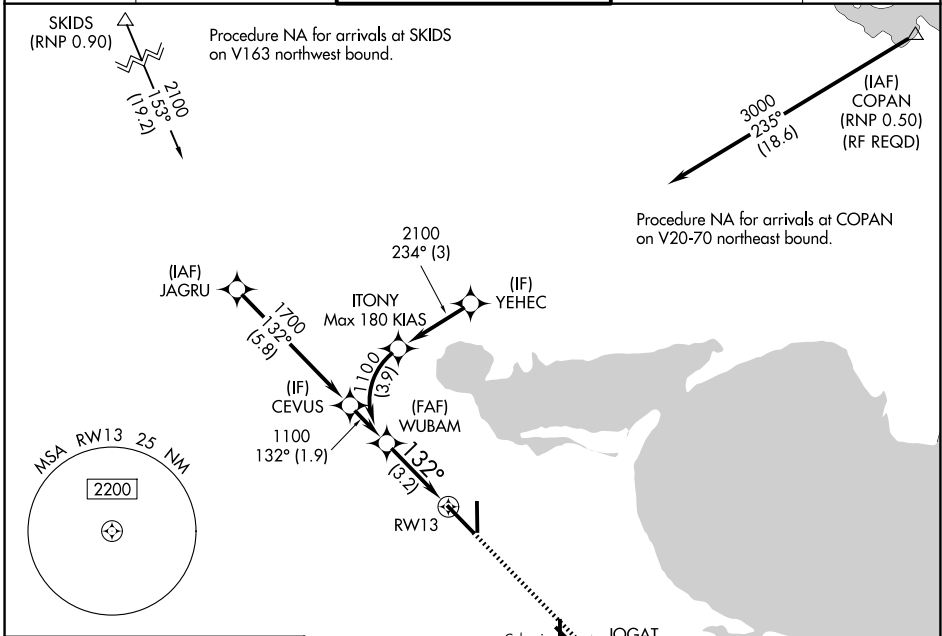
CORPUS CHRISTI INTL (CRP)

**▼** For uncompensated Baro-VNAV systems, procedure NA below -1°C (31°F) or above 54°C (130°F). GPS required.

MALSR 

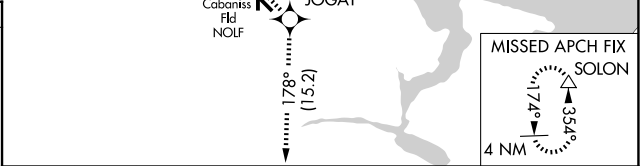
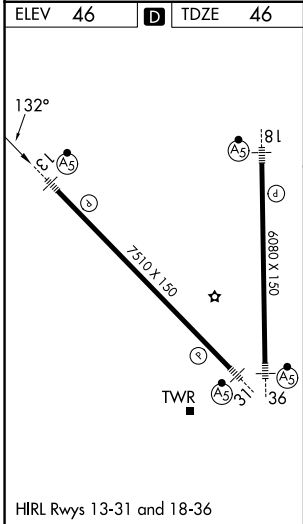
MISSED APPROACH: Climb to 2000 on track 132° to JOGAT and on track 178° to SOLON and hold.

ATIS <b>126.8</b>	CORPUS APP CON <b>120.9 348.725</b>	CORPUS TOWER <b>119.4 257.8</b>	GND CON <b>121.9 269.15</b>	CLNC DEL <b>118.55</b>
----------------------	--	------------------------------------	--------------------------------	---------------------------



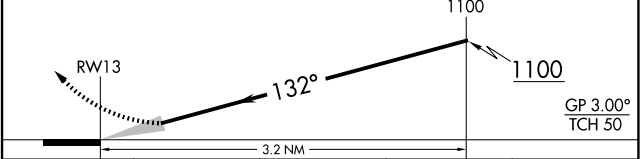
SC-3, 19 MAR 2026 to 16 APR 2026

SC-3, 19 MAR 2026 to 16 APR 2026



2000	JOGAT	SOLON
↑	tr 132°	tr 178°

See planview for multiple IF locations.



CATEGORY	A	B	C	D
RNP 0.30 DA		394/30	348 (400-%)	

**AUTHORIZATION REQUIRED**