


RNAV (RNP) Z RWY 31

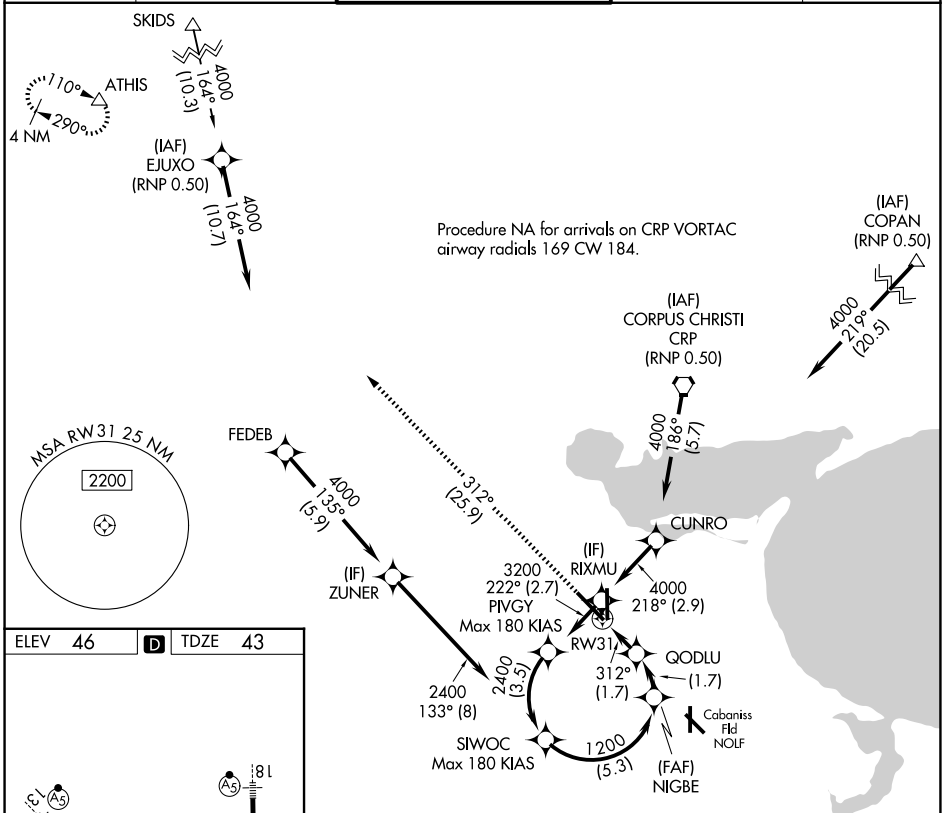
CORPUS CHRISTI INTL (CRP)

APP CRS	Rwy Ldg	7510
312°	TDZE	43
	Apt Elev	46

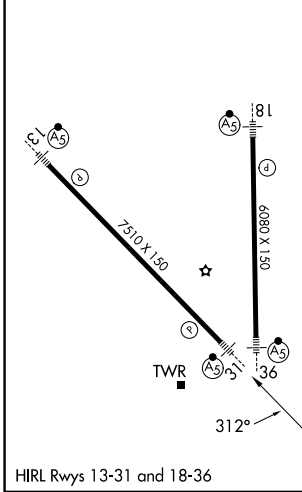
▼ For uncompensated Baro-VNAV systems, procedure NA below -1°C (31°F) or above 54°C (130°F). GPS and RF required. For inop MALSR, increase RNP 0.14 all Cats visibility to 7/8 mile.
 *Missed approach requires minimum climb of 335 feet per NM to 500.

MALSR

MISSED APPROACH: Climb to 2000 on track 312° to ATHIS and hold.

ATIS 126.8	CORPUS APP CON 120.9 348.725	CORPUS TOWER 119.4 257.8	GND CON 121.9 269.15	CLNC DEL 118.55
-----------------------------	-----------------------------------------------	-------------------------------------------	---------------------------------------	----------------------------------



ELEV 46	D	TDZE 43
---------	----------	---------



2000	ATHIS	See planview for multiple IF locations.	SIWOC
↑	△		
fr 312°			
RW31	GODLU	NIGBE	2400
	646	1200	
			GP 3.00° TCH 50
	1.7 NM	1.7 NM	5.3 NM
CATEGORY	A	B	C
RNP 0.14 DA*		303-1/2	260 (300-1/2)
RNP 0.30 DA		384-5/8	341 (400-5/8)

AUTHORIZATION REQUIRED

SC-3, 19 MAR 2026 to 16 APR 2026

SC-3, 19 MAR 2026 to 16 APR 2026