

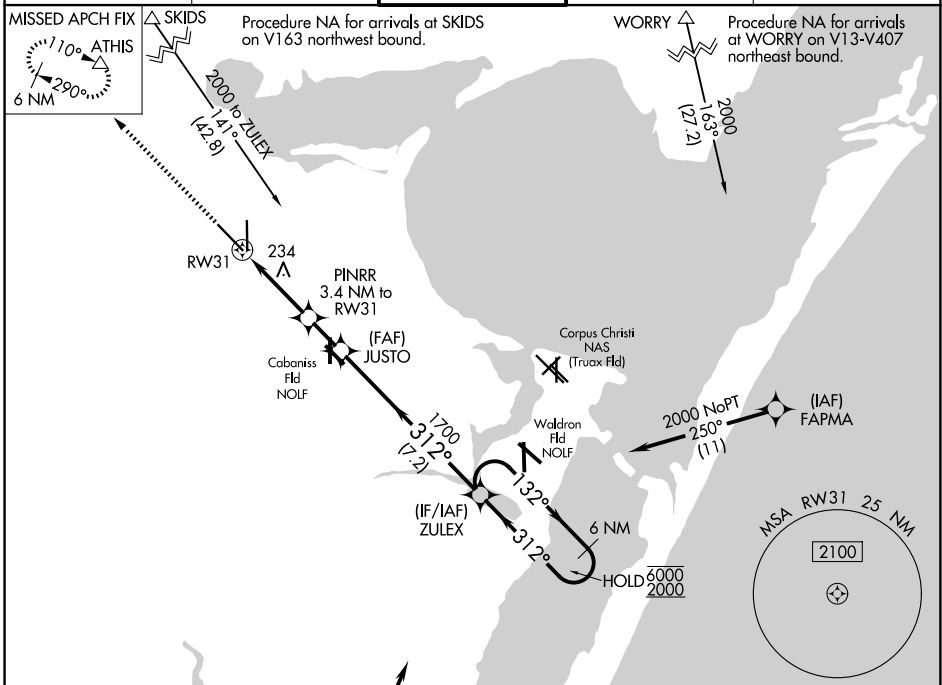
APP CRS	Rwy Ldg	<b>7510</b>
<b>312°</b>	TDZE	<b>43</b>
	Apt Elev	<b>46</b>

# RNAV (GPS) X RWY 31

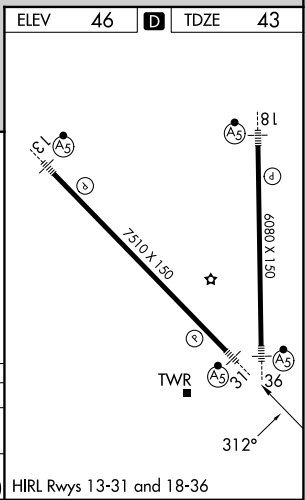
CORPUS CHRISTI INTL (CRP)

RNP APCH - GPS	MALSR	MISSED APPROACH: Climb to 2000 direct ATHIS and hold.
For inop ALS, increase LNAV Cat E visibility to 1½ mile.		

ATIS <b>126.8</b>	CORPUS APP CON <b>120.9 348.725</b>	<b>CORPUS TOWER</b> <b>119.4 257.8</b>	GND CON <b>121.9 269.15</b>	CLNC DEL <b>118.55</b>
----------------------	--	---	--------------------------------	---------------------------



2000	ATHIS	VGSI and descent angles not coincident (VGSI Angle 3.00/TCH 50).		ZULEX	6 NM Holding Pattern
CATEGORY	A	B	C	D	E
LNAV MDA	500-½	457 (500-½)	500-¾		457 (500-¾)
CIRCLING	500-1 454 (500-1)	780-1 734 (800-1)	820-2¼ 774 (800-2¼)	820-2½ 774 (800-2½)	820-2¾ 774 (800-2¾)



SC-3, 19 MAR 2026 to 16 APR 2026

SC-3, 19 MAR 2026 to 16 APR 2026