

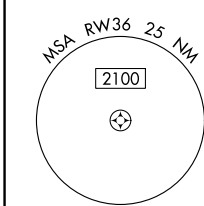
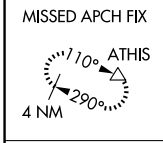
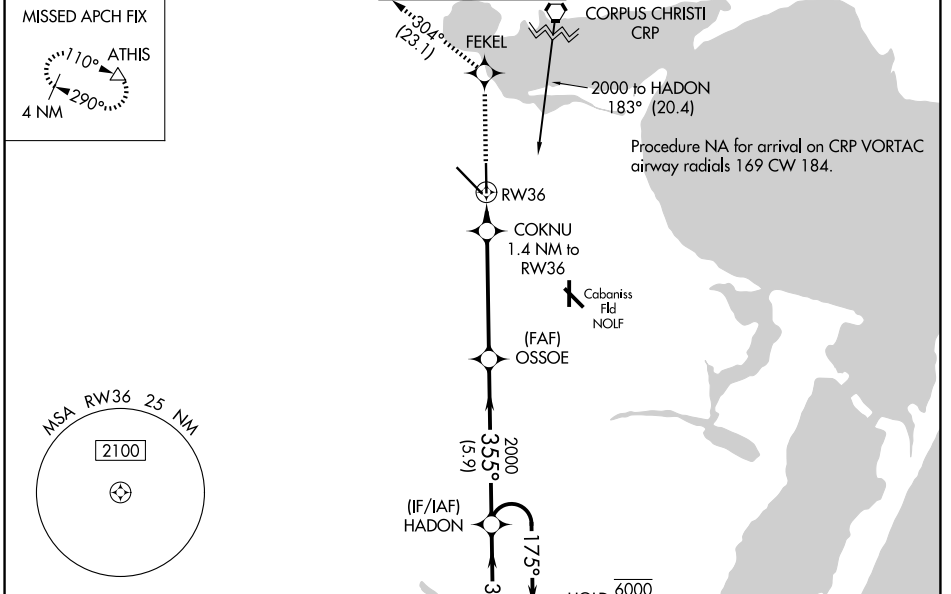
WAAS CH <b>69617</b> <b>W36A</b>	APP CRS <b>355°</b>	Rwy Ldg TDZE Apt Elev	<b>6080</b> <b>40</b> <b>46</b>
--	------------------------	-----------------------------	---------------------------------------

# RNAV (GPS) Y RWY 36

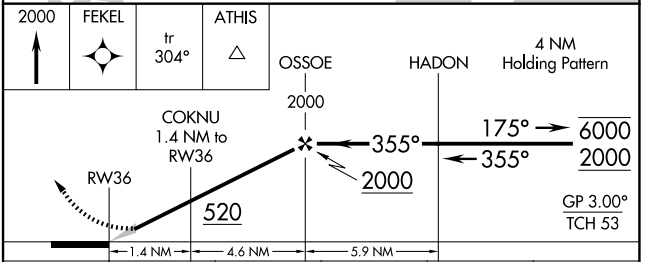
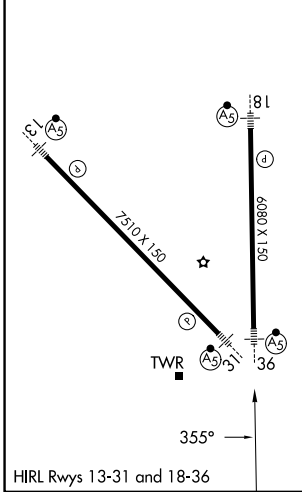
CORPUS CHRISTI INTL (CRP)

RNP APCH - GPS.	<p>⚠ For uncompensated Baro-VNAV systems, LNAV/VNAV NA below -1°C or above 54°C. For inop ALS, increase LPV Cat E visibility to RVR 4000, LNAV/VNAV all Cats visibility to RVR 4500 and LNAV Cat E visibility to RVR 6000. * RVR 1800 authorized with use of FD or AP or HUD to DA.</p>	MALSR 	MISSED APPROACH: Climb to 2000 direct FEKEL and on track 304° to ATHIS and hold.
-----------------	---	-----------	--

ATIS <b>126.8</b>	CORPUS APP CON <b>120.9 348.725</b>	CORPUS TOWER <b>119.4 257.8</b>	GND CON <b>121.9 269.15</b>	CLNC DEL <b>118.55</b>
----------------------	--	------------------------------------	--------------------------------	---------------------------



ELEV 46	<b>D</b>	TDZE 40
---------	----------	---------



CATEGORY	A	B	C	D	E
LPV DA*	240/24		200 (200-½)		
LNAV/VNAV DA	356/24		316 (400-½)		
LNAV MDA	440/24	400 (400-½)	440/35	400 (400-½)	
CIRCLING	500-1 454 (500-1)	780-1 734 (600-1)	820-2¼ 774 (800-2¼)	820-2½ 774 (800-2½)	820-2¾ 774 (800-2¾)

SC-3, 19 MAR 2026 to 16 APR 2026

SC-3, 19 MAR 2026 to 16 APR 2026