

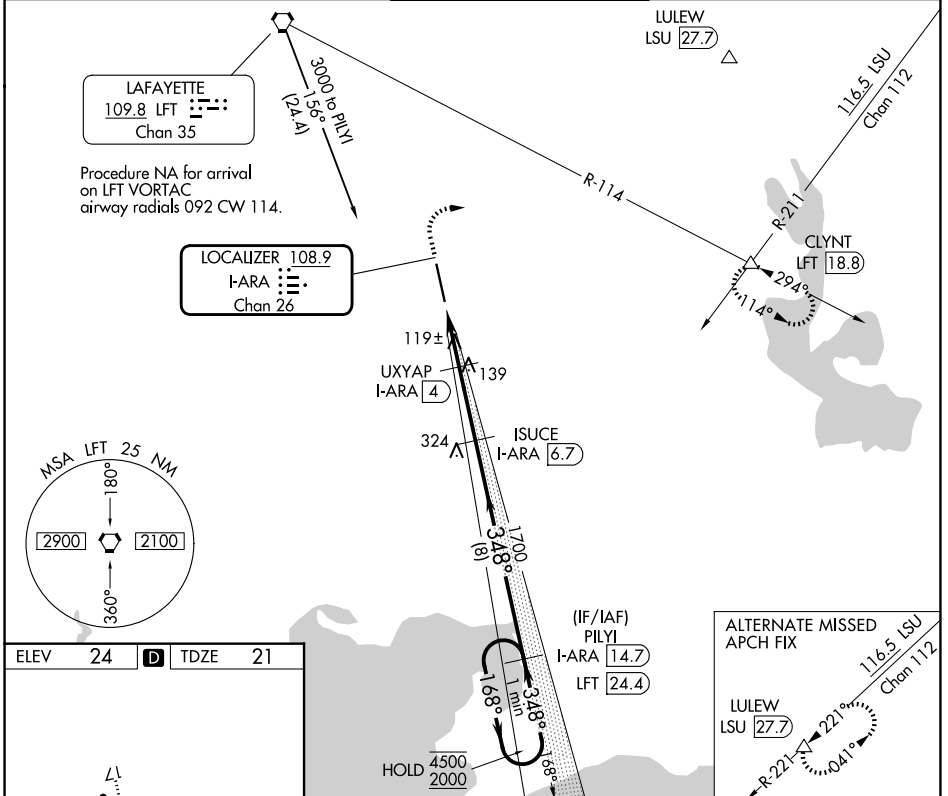
LOC/DME I-ARA 108.9 Chan 26	APP CRS 348°	Rwy Ldg 8002 TDZE 21 Apt Elev 24
---	------------------------	---

ILS or LOC RWY 35

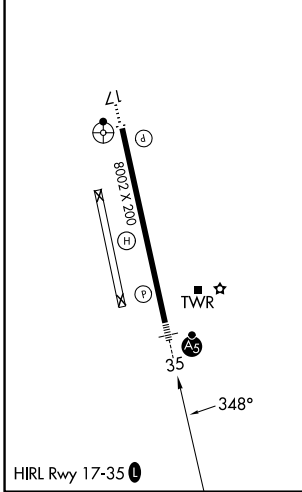
ACADIANA RGNL (A.R.A.)

DME required for procedure entry. DME required for LOC only.		MALSRL	MISSED APPROACH: Climb to 800 then climbing right turn to 2000 on heading 080° and LFT R-114 to CLYNT INT/LFT 18.8 DME and hold.
<p>⚠ Circling NA to Rwy's 17W and 35W. For inop ALS increase S-ILS 35 Cat E visibility to 3/4 SM and S-LOC 35 Cats C/D/E visibility to 1 1/2 SM.</p>			

ASOS 133.325	LAFAYETTE APP CON★ 121.1 268.7	ACADIANA TOWER★ 125.0 (CTAF) 0 239.3	GND CON 121.7	UNICOM 122.95
------------------------	--	--	-------------------------	-------------------------



ELEV 24	D	TDZE 21
---------	----------	---------



800	2000	LFT R-114	CLYNT	ISUCE I-ARA [6.7]	PILYI I-ARA [14.7]	One Minute Holding Pattern
<p>*LOC only.</p> <p>180° turns, 1 min legs, 4500/2000 hold.</p>						
*I-ARA [1.6]		*I-ARA [2.6]	UXYAP I-ARA [4]	1700	348°	168° → 4500
1.4 NM		2.7 NM	8 NM	1700	348°	← 2000
CATEGORY	A	B	C	D	E	
S-ILS 35	221-1/2 200 (200-1/2)					
S-LOC 35	440-3/4 419 (500-3/4)					
CIRCLING	440-1 416 (500-1)	480-1 456 (500-1)	600-1 1/2 576 (600-1 1/2)	680-2 656 (700-2)	900-3 876 (900-3)	GS 3.00° TCH 5T

SC-4, 19 MAR 2026 to 16 APR 2026

SC-4, 19 MAR 2026 to 16 APR 2026