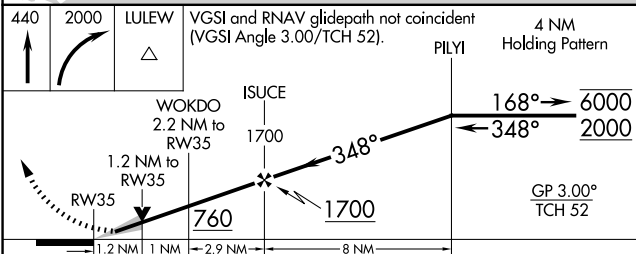
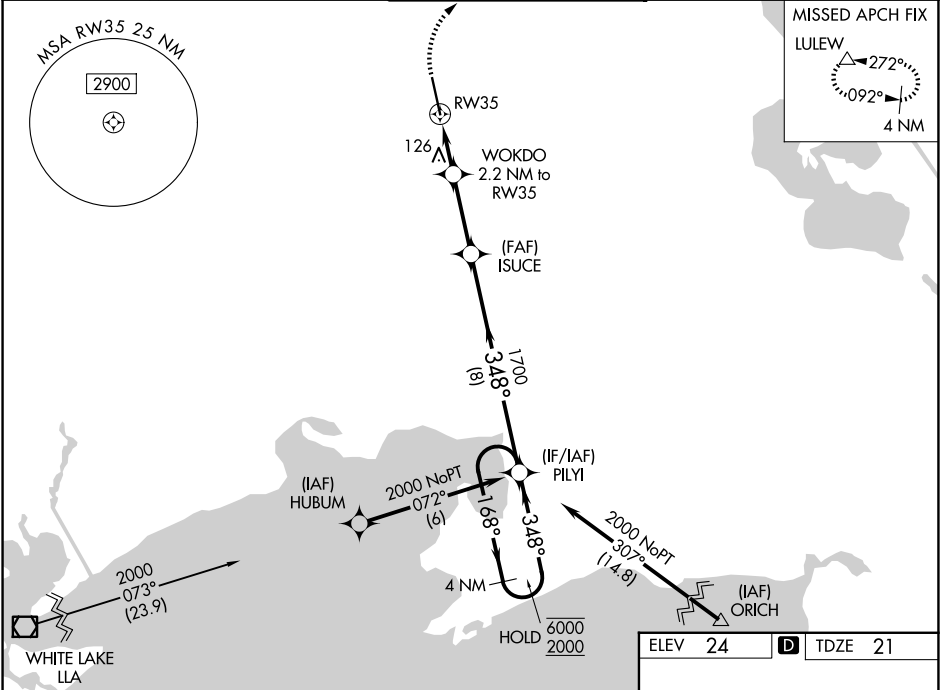


|  |                        |   |
|--|------------------------|---|
| WAAS<br>CH <b>40301</b><br><b>W35A</b> | APP CRS<br><b>348°</b> | Rwy Ldg <b>8002</b><br>TDZE <b>21</b><br>Apt Elev <b>24</b> |
|--|------------------------|---|

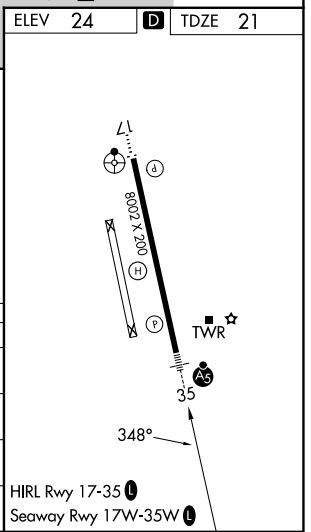
# RNAV (GPS) RWY 35

ACADIANA RGNL (A.R.A)

|  |  |   |   |                         |
|--|--|---|---|-------------------------|
| RNP APCH - GPS.  |  | MALSR   | MISSED APPROACH: Climb to 440 then climbing right turn to 2000 direct LULEW and hold. |                         |
| <p>⚠ For uncompensated Baro-VNAV systems, LNAV/VNAV NA below -3°C or above 54°C. Circling NA to Rwy's 17W and 35W. For inop ALS, increase LNAV/VNAV all Cats visibility to ½ SM and LNAV Cats C and D visibility to 1½ SM.</p> |  |   |   |                         |
| ASOS<br><b>133.325</b>   | LAFAYETTE APP CON★<br><b>121.1 268.7</b> | ACADIANA TOWER★<br><b>125.0</b> (CTAF) <b>239.3</b> | GND CON<br><b>121.7</b>   | UNICOM<br><b>122.95</b> |



| CATEGORY      | A                    | B                    | C                      | D                    |
|---------------|----------------------|----------------------|------------------------|----------------------|
| LPV DA        |                      | 221-½                | 200 (200-½)            |                      |
| LNAV/ VNAV DA |                      | 303-½                | 282 (300-½)            |                      |
| LNAV MDA      | 440-½                | 419 (500-½)          | 440-¾                  | 419 (500-¾)          |
| CIRCLING      | 440-1<br>416 (500-1) | 480-1<br>456 (500-1) | 600-1½<br>576 (600-1½) | 680-2<br>656 (700-2) |



SC-4, 19 MAR 2026 to 16 APR 2026

SC-4, 19 MAR 2026 to 16 APR 2026