

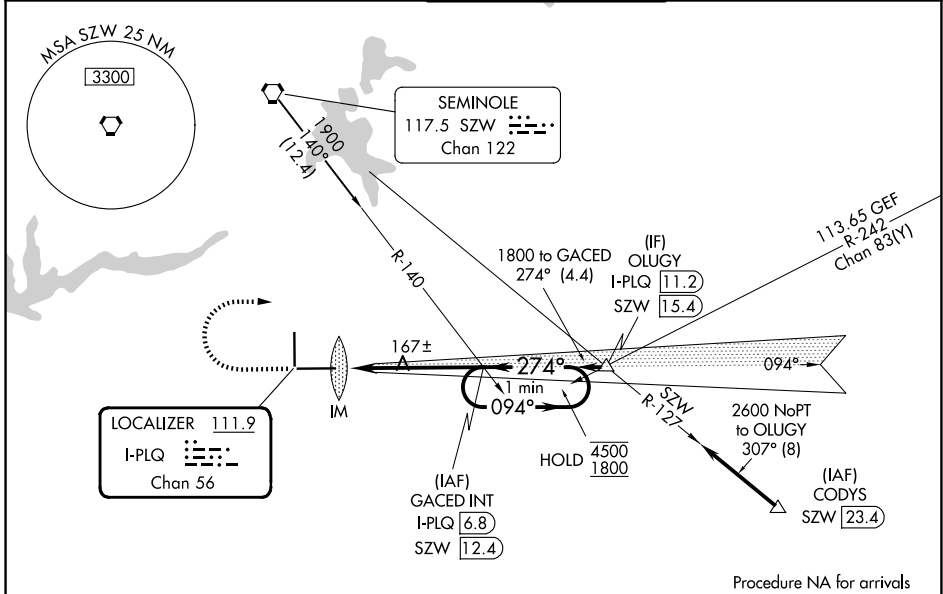
LOC/DME I-PLQ <b>111.9</b> Chan <b>56</b>	APP CRS <b>274°</b>	Rwy Ldg TDZE <b>58</b> Apt Elev <b>83</b>
---	------------------------	---

# ILS RWY 27 (CAT II)

TALLAHASSEE INTL (TLH)

DME required.	ALSF-2	MISSED APPROACH: Climb to 2000 then climbing right turn to 4000 on heading 092° and on SZW VORTAC R-140 to GACED INT/SZW 12.4 DME and hold, continue climb-in-hold to 4000.
ASR		
S-ILS 27 NA when control tower closed.		

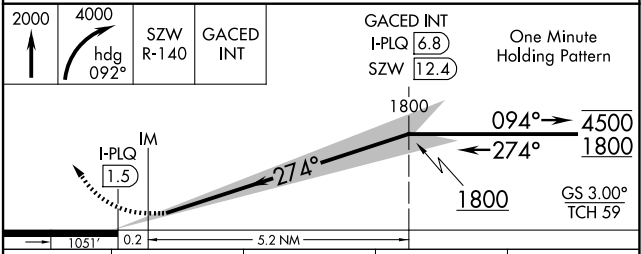
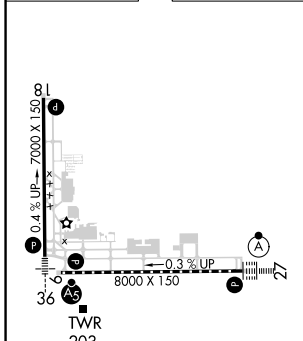
ATIS <b>119.45 239.25</b>	TALLAHASSEE APP CON ★ <b>135.8 317.4</b>	TALLAHASSEE TOWER ★ <b>118.7</b> (CTAF) <b>0 257.8</b>	GND CON <b>121.9 348.6</b>	UNICOM <b>123.075</b>
------------------------------	---	---	-------------------------------	--------------------------



SE-3, 19 MAR 2026 to 16 APR 2026

SE-3, 19 MAR 2026 to 16 APR 2026

ELEV 83	TDZE 58
---------	---------



CATEGORY	A	B	C	D
S-ILS 27	RA 114/12 100 DA 158			

**CATEGORY II ILS - SPECIAL AIRCREW & AIRCRAFT CERTIFICATION REQUIRED**