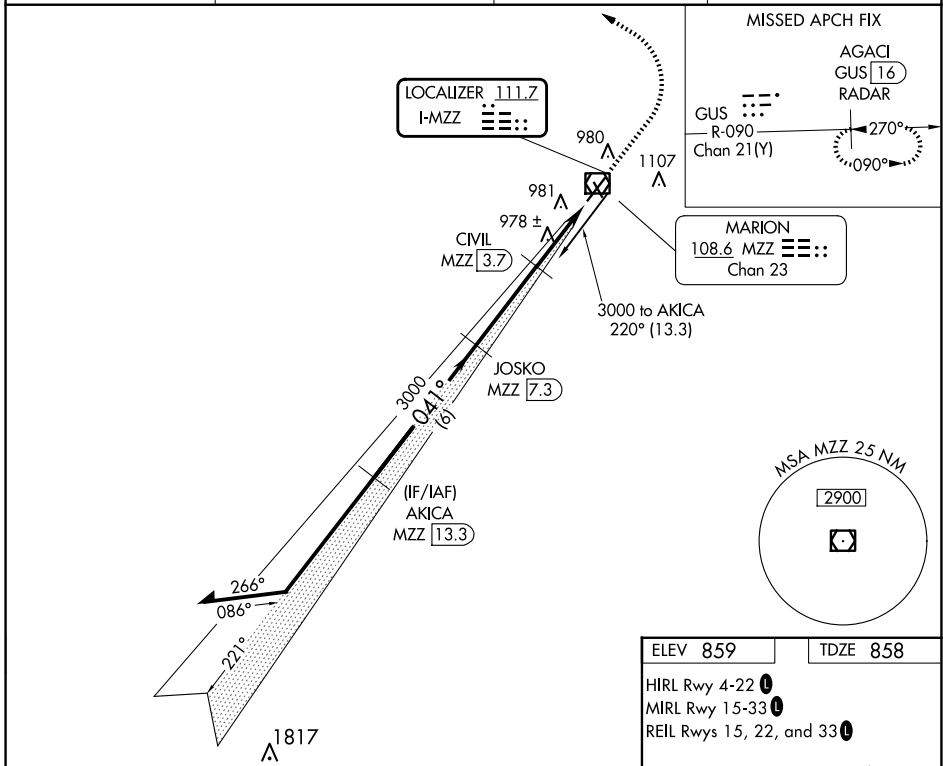


LOC I-MZZ 111.7	APP CRS 041°	Rwy Ldg TDZE Apt Elev	6011 858 859
---------------------------	------------------------	-----------------------------	---

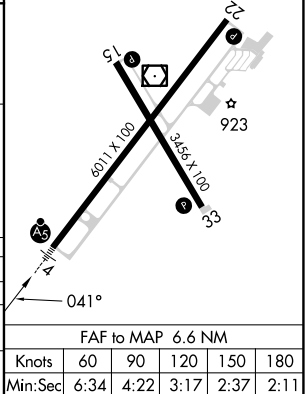
ILS or LOC RWY 4

MARION MUNI - MCKINNEY FLD (MZZ)

DME required.		MALS R	MISSED APPROACH: Climb to 2500 then climbing left turn to 4000 on heading 320° to intercept GUS VORTAC R-090 to AGACI/GUS VORTAC 16 DME/RADAR and hold.
▼	DME from MZZ VOR/DME. Simultaneous reception of I-MZZ and MZZ DME required. For inop ALS, increase S-LOC 4 Cats C and D visibility to 1½ SM. Circling Rwy 15 NA at night.	▲ NA	
AWOS-3 108.6	GRISSOM APP CON ★ 121.05 338.275	CLNC DEL 120.0	UNICOM 122.7 (CTAF) 0



Remain within 10 NM	AKICA MZZ 13.3	JOSKO MZZ 7.3	2500	4000	GUS R-090	AGACI GUS 16 RADAR
	3000	3000	CIVIL MZZ 3.7	MZZ 1.8	MZZ 0.7	
GS 3.00° TCH 52	041°	041°	3000	1860		
	6 NM	3.6 NM	1.9 NM	1.1 NM		
CATEGORY	A	B	C	D		
S-ILS 4		1058-½	200 (200-½)			
S-LOC 4	1260-½	402 (500-½)	1260-¾	402 (500-¾)		
☐ CIRCLING	1300-1 441 (500-1)	1320-1 461 (500-1)	1420-1½ 561 (600-1½)	1500-2 641 (700-2)		



EC-2, 19 MAR 2026 to 16 APR 2026

EC-2, 19 MAR 2026 to 16 APR 2026