

| | | |
|---|------------------------|---|
| VOR/DME MZZ 108.6 Chan 23 | APP CRS 143° | Rwy Idg 3456 TDZE 859 Apt Elev 859 |
|---|------------------------|---|

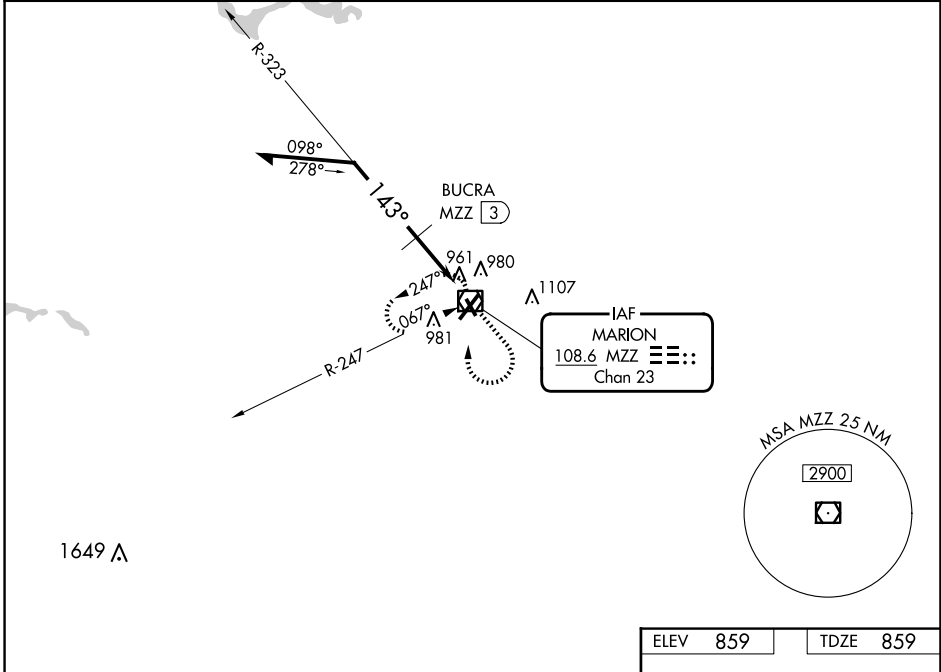
VOR RWY 15

MARION MUNI - MCKINNEY FLD (MZZ)

⚠ NA When local altimeter setting not received, use Fort Wayne Intl altimeter setting and increase all MDA 100 feet, increase S-15 Cat B/C/D visibility $\frac{1}{4}$ SM, increase Circling Cat B/C/D visibility $\frac{1}{2}$ SM; BUCRA fix minimums: increase S-15 Cat C/D visibility $\frac{3}{8}$ SM, increase Circling Cat C/D visibility $\frac{1}{2}$ SM. Rwy 15 helicopter visibility reduction below 1 SM NA. Circling Rwy 15 NA at night. Straight-in Rwy 15 NA at night.

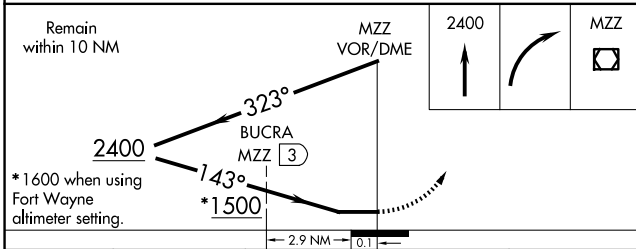
MISSED APPROACH:
Climb to 2400 then right turn direct MZZ VOR/DME and hold.

| | | | |
|------------------------|--|--------------------------|---------------------------------|
| AWOS-3 108.6 | GRISSOM APP CON * 121.05 338.275 | CLNC DEL 120.0 | UNICOM 122.7 (CTAF) 0 |
|------------------------|--|--------------------------|---------------------------------|

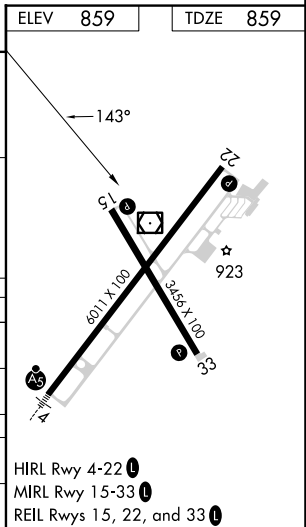


EC-2, 19 MAR 2026 to 16 APR 2026

EC-2, 19 MAR 2026 to 16 APR 2026



| CATEGORY | A | B | C | D |
|---------------------------|-----------------------|-----------------------|--|-----------------------|
| S-15 | 1500-1 | 641 (700-1) | 1500-1 $\frac{3}{4}$ 641 (700-1 $\frac{3}{4}$) | 1500-2 641 (700-2) |
| C CIRCLING | 1500-1 | 641 (700-1) | 1500-1 $\frac{7}{8}$ 641 (700-1 $\frac{7}{8}$) | 1500-2 641 (700-2) |
| BUCRA FIX MINIMUMS | | | | |
| S-15 | 1240-1 381 (400-1) | | 1240-1 $\frac{1}{4}$ 381 (400-1 $\frac{1}{4}$) | |
| C CIRCLING | 1300-1 441 (500-1) | 1320-1 461 (500-1) | 1420-1 $\frac{1}{2}$ 561 (600-1 $\frac{1}{2}$) | 1500-2 641 (700-2) |



VOR RWY 15