


WAAS CH <b>53499</b> <b>W15A</b>	APP CRS <b>147°</b>	Rwy Ldg TDZE Apt Elev	<b>5535</b> <b>1158</b> <b>1160</b>
--	------------------------	-----------------------------	---

# RNAV (GPS) RWY 15

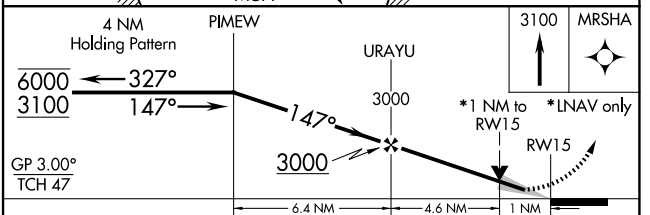
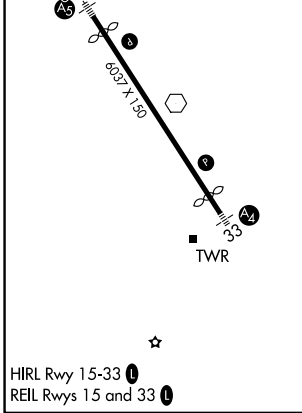
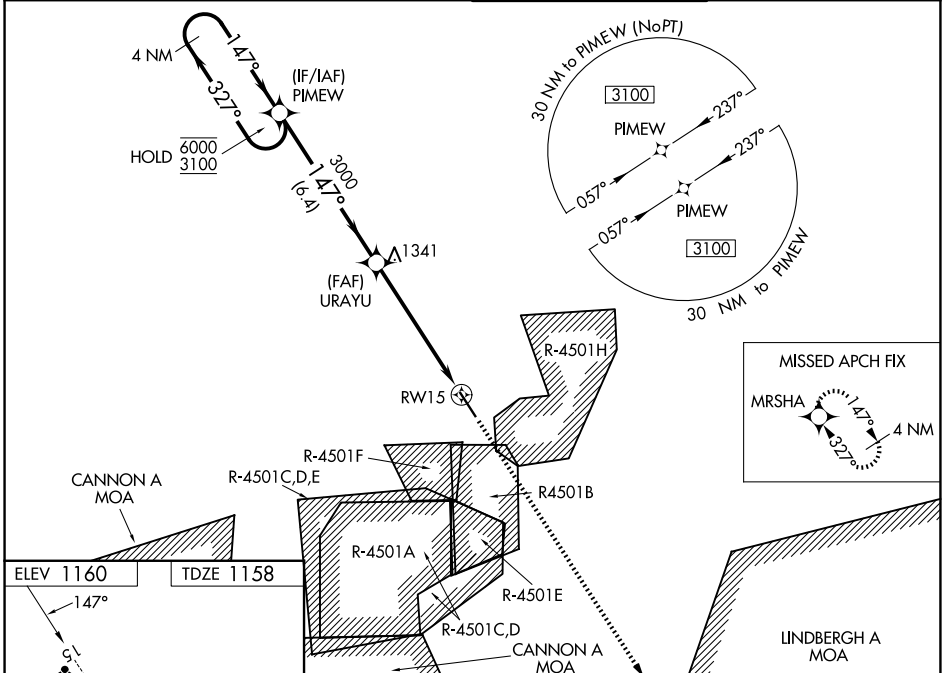
WAYNESVILLE-ST ROBERT RGNL FORNEY FLD (T'BN)

RNP APCH.

▼ For uncompensated Baro-VNAV systems, LNAV/VNAV NA below -18°C or above 54°C.  
 ▲ VDP and Baro-VNAV NA when using Rolla Nil altimeter setting. When local altimeter setting not received, use Rolla Nil altimeter setting and increase all LPV DA to 1427 and LNAV/VNAV DA to 1477; increase all MDAs 80 feet. Inop table does not apply. For inop ALS when using Rolla Nil altimeter setting increase LNAV Cat C/D visibility to 1 3/8 SM. Circling NA west of Rwy 15-33. Inop table does not apply to LPV, LNAV/VNAV, all Cats, and LNAV Cats A/B minimums when using Rolla Nil altimeter setting.

MALSR  MISSED APPROACH: Climb to 3100 direct MRSHA and hold.

D-ATIS <b>118.7 229.4</b>	KANSAS CITY CENTER <b>128.35 284.675</b>	FORNEY TOWER * <b>125.4 (CTAF) 0 268.7</b>	GND CON <b>123.75 256.8</b>
------------------------------	---	---	--------------------------------



CATEGORY	A	B	C	D
LPV DA		1358-1	200 (200-1)	
LNAV/VNAV DA		1408-1	250 (300-1)	
LNAV MDA		1520-1	362 (400-1)	
CIRCLING	1580-1 420 (500-1)	1660-1 500 (500-1)	1660-1 1/2 500 (500-1 1/2)	1720-2 560 (600-2)

NC-3, 19 MAR 2026 to 16 APR 2026

NC-3, 19 MAR 2026 to 16 APR 2026