

VOR TBN 110.0	APP CRS 329°	Rwy Ldg 5510	TDZE 1153
		Apt Elev 1160	

VOR RWY 33

WAYNESVILLE-ST ROBERT RGNL FORNEY FLD (T'BN)

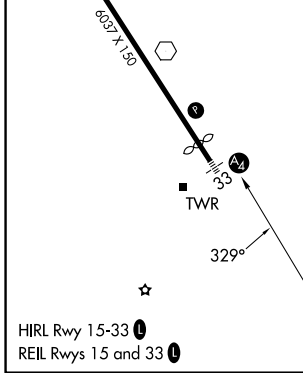
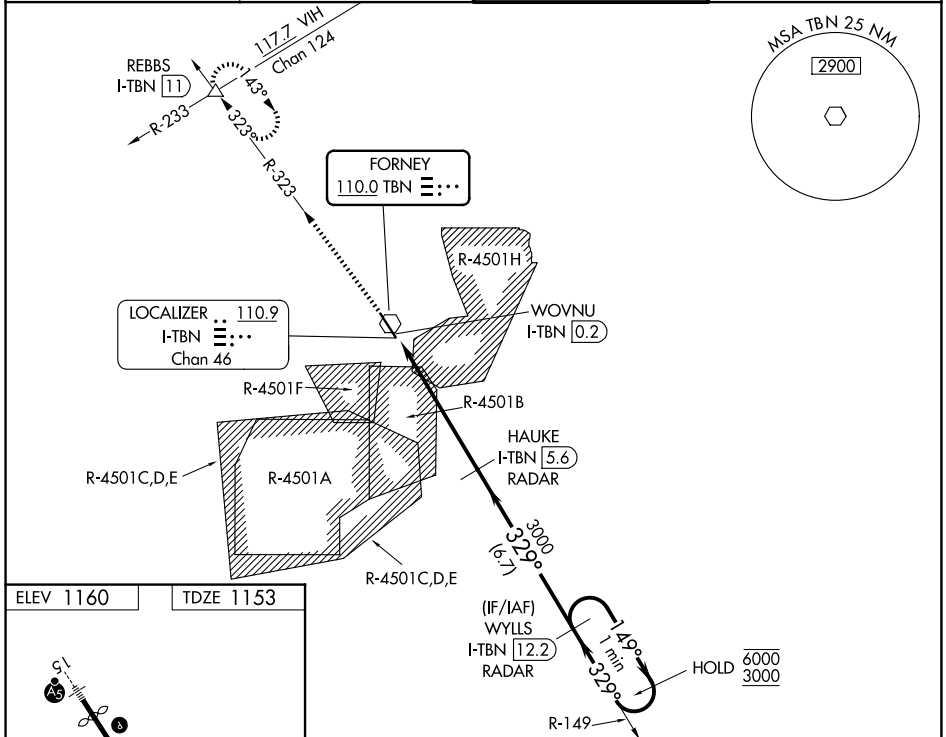
DME or RADAR required. RADAR required for procedure entry.

⚠ When local altimeter not received, use Rolla Ntl altimeter setting and increase all MDAs 80 feet. Increase S-33 Cats C/D visibility to 1¼ SM. Procedure NA when R-4501B or R-4501H in use. Circling NA west of Rwy 15-33. Rwy 33 helicopter visibility reduction below ¾ SM NA. Inop table does not apply to Cats A and B. For inop ALS, increase Cats C and D visibility to 1¾ SM. Inop table does not apply to Cats A and B when using Rolla Ntl altimeter setting.

MALS
A2

MISSED APPROACH: Climb to 3000 on TBN VOR R-323 to REBBS INT/I-TBN LOC/DME 11 DME and hold.

D-ATIS 118.7 229.4	KANSAS CITY CENTER 128.35 284.675	FORNEY TOWER ★ 125.4 (CTAF) 0 268.7	GND CON 123.75 256.8
------------------------------	---	---	--------------------------------



3000	REBBS △ TBN R-323	HAUKE I-TBN 5.6 RADAR	WYLLS I-TBN 12.2 RADAR	One Minute Holding Pattern
	I-TBN DME ANTENNA			
	WOVNU I-TBN 0.2	I-TBN 1.2	329°	149° → 6000 ← 329° 3000
	3.00° TCH 36			
	1.3 NM	4.4 NM	6.7 NM	
CATEGORY	A	B	C	D
S-33		1600-1	447 (500-1)	
CIRCLING	1600-1 440 (500-1)	1660-1 500 (500-1)	1660-1½ 500 (500-1½)	1720-2 560 (600-2)

VOR RWY 33

NC-3, 19 MAR 2026 to 16 APR 2026

NC-3, 19 MAR 2026 to 16 APR 2026