

LOC/DME I-AFJ 110.3 Chan 40	APP CRS 273°	Rwy Idg TDZE 1184 Apt Elev 1184
--	------------------------	---

ILS or LOC RWY 27

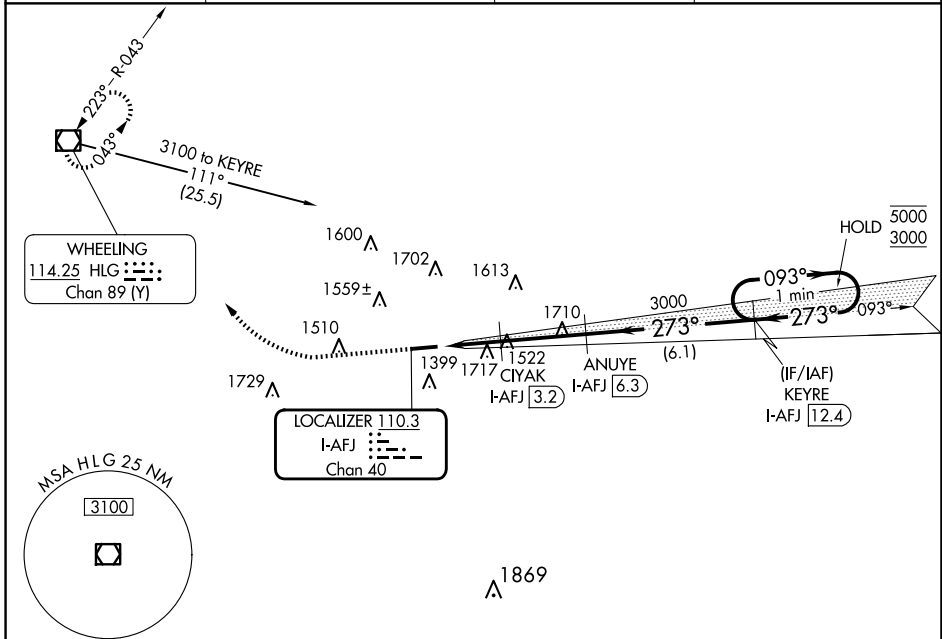
WASHINGTON COUNTY (AFJ)

DME required. RADAR required for procedure entry.

⚠ NA Circling NA for Cat D N of Rwy 9-27. Rwy 27 helicopter visibility reduction below 3/4 NA. Circling Rwy 9 NA at night.

MISSED APPROACH: Climb to 1700 then climbing right turn to 3300 direct HLG VOR/DME and hold.

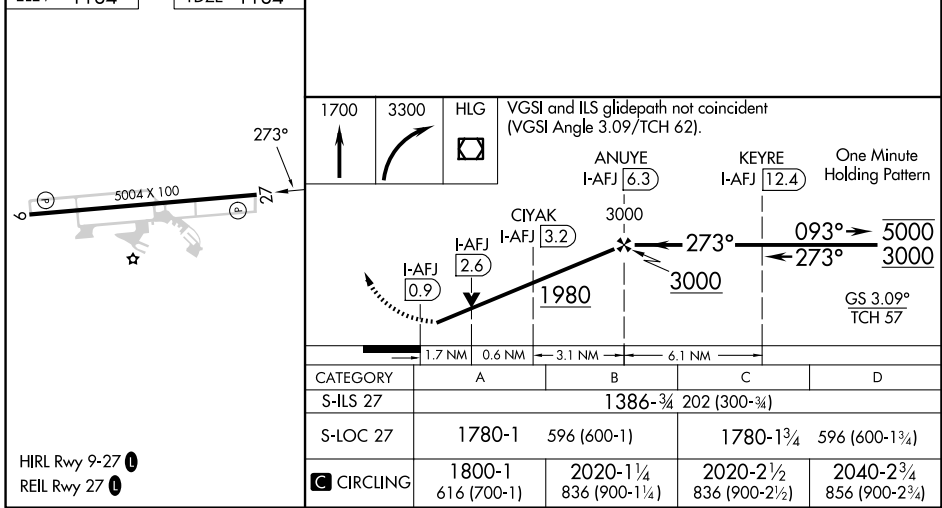
AWOS-3PT 119.175	PITTSBURGH APP CON 119.35 285.575	CLNC DEL 127.3	UNICOM 122.975 (CTAF) 0
----------------------------	---	--------------------------	-----------------------------------



NE-4, 19 MAR 2026 to 16 APR 2026

NE-4, 19 MAR 2026 to 16 APR 2026

ELEV 1184	TDZE 1184
-----------	-----------



	1700	3300	HLG	VGSI and ILS glidepath not coincident (VGSI Angle 3.09/TCH 62).
	↑	↷	☐	
				ANUYE I-AFJ 6.3
				KEYRE I-AFJ 12.4
				One Minute Holding Pattern
				5000
				3000
				GS 3.09° TCH 57
				1.7 NM
				0.6 NM
				3.1 NM
				6.1 NM
CATEGORY	A	B	C	D
S-ILS 27		1386-3/4	202 (300-3/4)	
S-LOC 27	1780-1	596 (600-1)	1780-1 3/4	596 (600-1 3/4)
C CIRCLING	1800-1	2020-1 1/4	2020-2 1/2	2040-2 3/4
	616 (700-1)	836 (900-1 1/4)	836 (900-2 1/2)	856 (900-2 3/4)