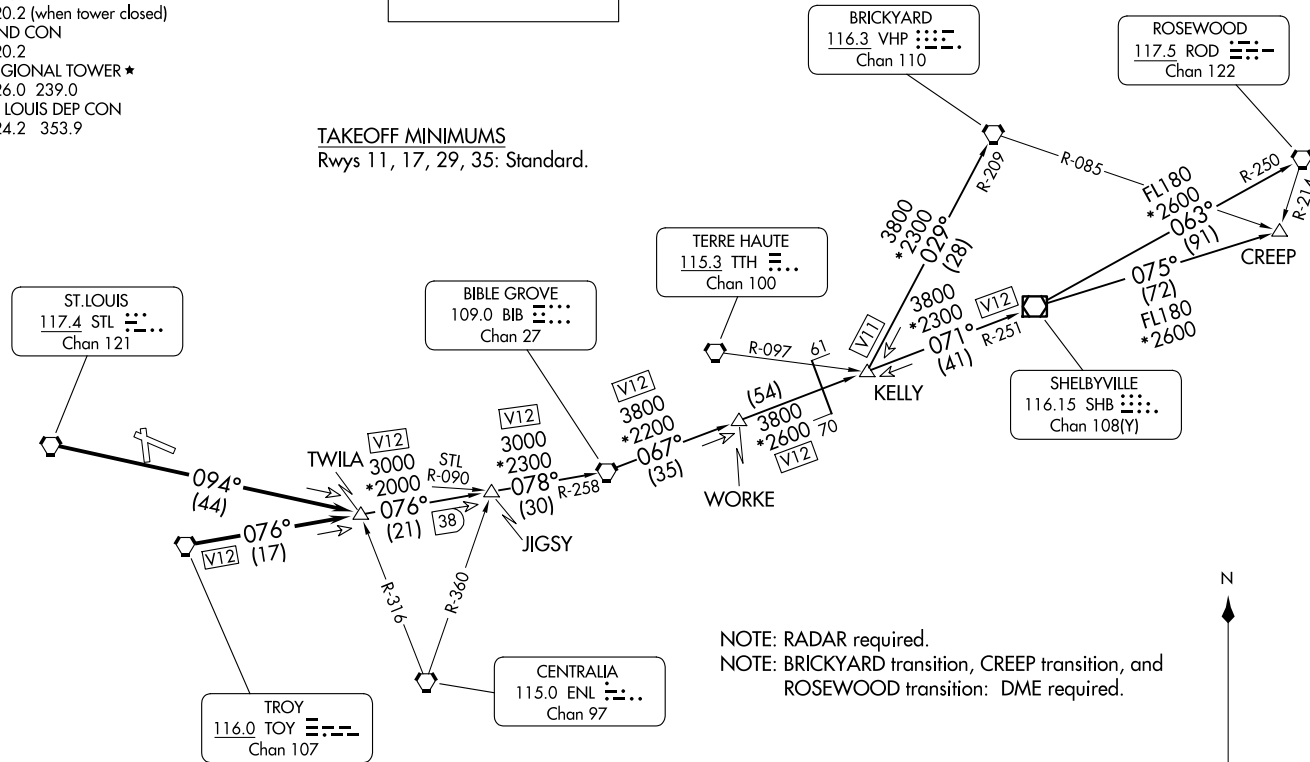


GATEWAY ONE DEPARTURE  
(GATWY1.TWILA) 08NOV18

ATIS  
128.0  
CLNC DEL  
120.2 (when tower closed)  
GND CON  
120.2  
REGIONAL TOWER ★  
126.0 239.0  
ST LOUIS DEP CON  
124.2 353.9

TOP ALTITUDE:  
ASSIGNED BY ATC

TAKEOFF MINIMUMS  
Rwys 11, 17, 29, 35: Standard.



NOTE: RADAR required.  
NOTE: BRICKYARD transition, CREEP transition, and ROSEWOOD transition: DME required.

(CONTINUED ON FOLLOWING PAGE)

NOTE: Chart not to scale.

ALTON/ST. LOUIS, ILLINOIS  
ST LOUIS RGNL (ALN)

(GATWY1.TWILA) 24025  
GATEWAY ONE DEPARTURE

AL-5178 (FAA)

ST LOUIS RGNL (ALN)  
ALTON/ST. LOUIS, ILLINOIS



DEPARTURE ROUTE DESCRIPTION

Climb on assigned heading for vector to appropriate route, maintain 2500 or assigned altitude, thence. . . .

. . . .from over TOY VORTAC on TOY R-076 or over STL VORTAC on STL R-094 to TWILA INT. Then on (transition), expect clearance to filed altitude 10 minutes after departure.

BIBLE GROVE TRANSITION (GATWY1.BIB): From over TWILA on TOY R-076 to JIGSY, then on BIB R-258 to BIB VORTAC.

BRICKYARD TRANSITION (GATWY1.VHP): From over TWILA on TOY R-076 to JIGSY, then on BIB R-258 to BIB VORTAC, then on BIB R-067 to WORKE, then on BIB R-067 and SHB R-251 to KELLY, then on VHP R-209 to VHP VORTAC.

CREEP TRANSITION (GATWY1.CREEP): From over TWILA on TOY R-076 to JIGSY, then on BIB R-258 to BIB VORTAC, then on BIB R-067 to WORKE, then on BIB R-067 and SHB R-251 to KELLY, then on SHB R-251 to SHB VOR/DME, then on SHB R-075 to CREEP.

JIGSY TRANSITION (GATWY1.JIGSY): From over TWILA on TOY R-076 to JIGSY.

ROSEWOOD TRANSITION (GATWY1.ROD): From over TWILA on TOY R-076 to JIGSY, then on BIB R-258 to BIB VORTAC, then on BIB R-067 to WORKE, then on BIB R-067 and SHB R-251 to KELLY, then on SHB R-251 to SHB VOR/DME, then on SHB R-063 and ROD R-250 to ROD VORTAC.

EC-3, 19 MAR 2026 to 16 APR 2026

EC-3, 19 MAR 2026 to 16 APR 2026