

FORT RUCKER, ALABAMA

COPTER RNAV (GPS) RWY 17

[USA]

HANCHEY AHP (FORT RUCKER) (KHEY)

APCH CRS	Rwy Idg	476
176°	TDZE	318
	Arpt Elev	318

RNP APCH - GPS

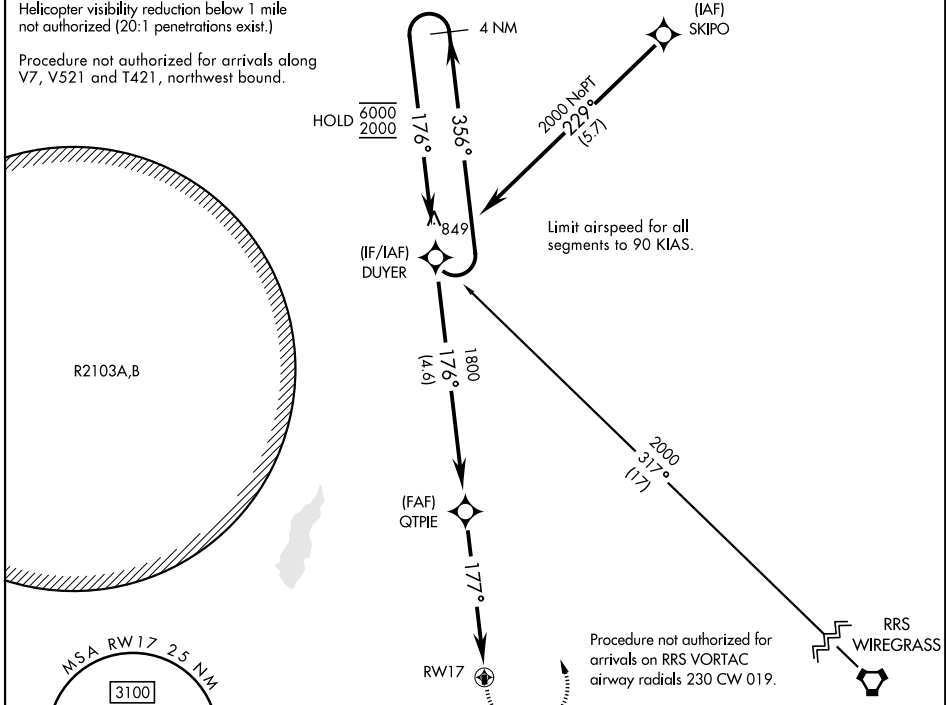
▼ Use CAIRNS altimeter setting, when not received, use LOWE altimeter setting.
▲ Procedure not authorized at night.

MISSED APPROACH: Climbing left turn to 2000 direct DUYER and hold.

ATIS ★	CAIRNS APP CON	TOWER ★	GND CON	CAIRNS CLNC DEL
141.375	125.4 327.125	140.5 387.85	142.55 225.575	118.075 380.1

Helicopter visibility reduction below 1 mile not authorized (20:1 penetrations exist.)

Procedure not authorized for arrivals along V7, V521 and T421, northwest bound.



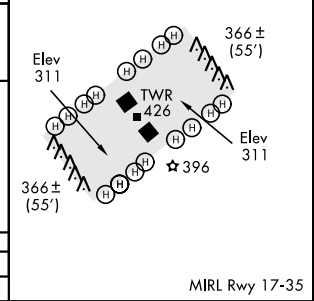
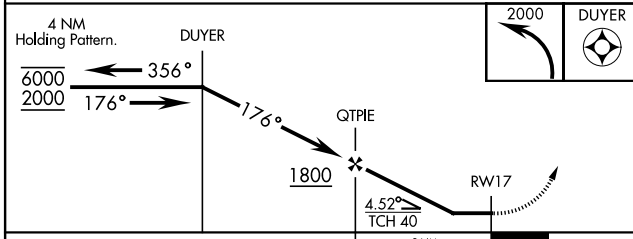
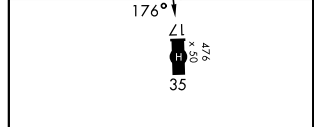
Limit airspeed for all segments to 90 KIAS.

Procedure not authorized for arrivals on RRS VORTAC airway radials 230 CW 019.

SE-4, 19 MAR 2026 to 16 APR 2026

SE-4, 19 MAR 2026 to 16 APR 2026

ELEV	318	TDZE	318
------	-----	------	-----



CATEGORY	COPTER		
LNAV MDA	900-1	582	(600-1)

MIRL Rwy 17-35

FORT RUCKER, ALABAMA

31° 21' N-85° 39' W

HANCHEY AHP (FORT RUCKER) (KHEY)

Amdt 3 10JUL25

COPTER RNAV (GPS) RWY 17