

APP CRS 263°	Rwy Ldg TDZE Apt Elev	5001 3689 3706
------------------------	-----------------------------	---

RNAV (GPS) RWY 26

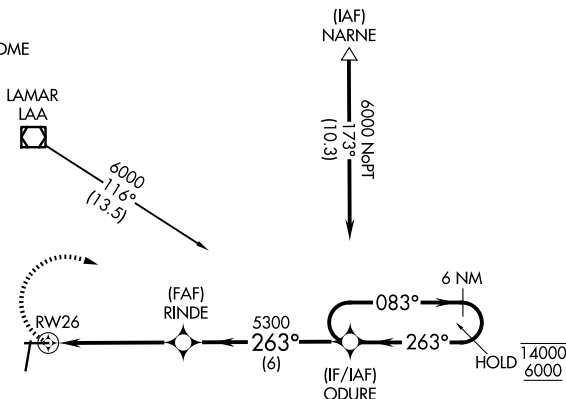
SOUTHEAST COLORADO RGNL (L.A.A)

RNP APCH.	MISSED APPROACH: Climbing right turn to 6000 direct ODURE and hold.
▽ ▲ Rwy 26 helicopter visibility reduction below 3/4 SM NA.	

ASOS 135,625	DENVER CENTER 133.4 377.175	UNICOM 122.8 (CTAF) 0
------------------------	---------------------------------------	---------------------------------

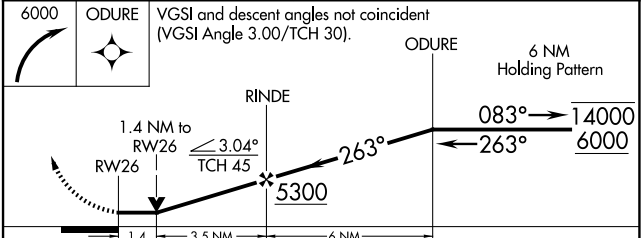
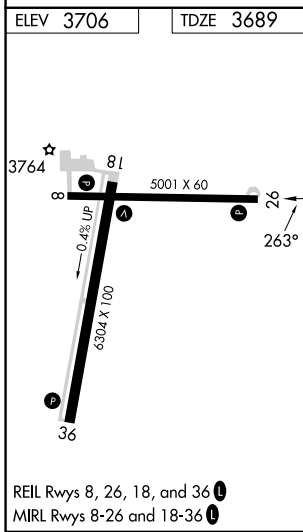
Procedure NA for arrival on LAA VOR/DME airway radials 048 CW 118.

Procedure NA for arrivals at NARNE on V244 northeast bound.



SW-1, 19 MAR 2026 to 16 APR 2026

SW-1, 19 MAR 2026 to 16 APR 2026



CATEGORY	A	B	C	D
LNAV MDA	4180-1	491 (500-1)	4180-1 ³ / ₈ 491 (500-1 ³ / ₈)	4180-1 ¹ / ₂ 491 (500-1 ¹ / ₂)