

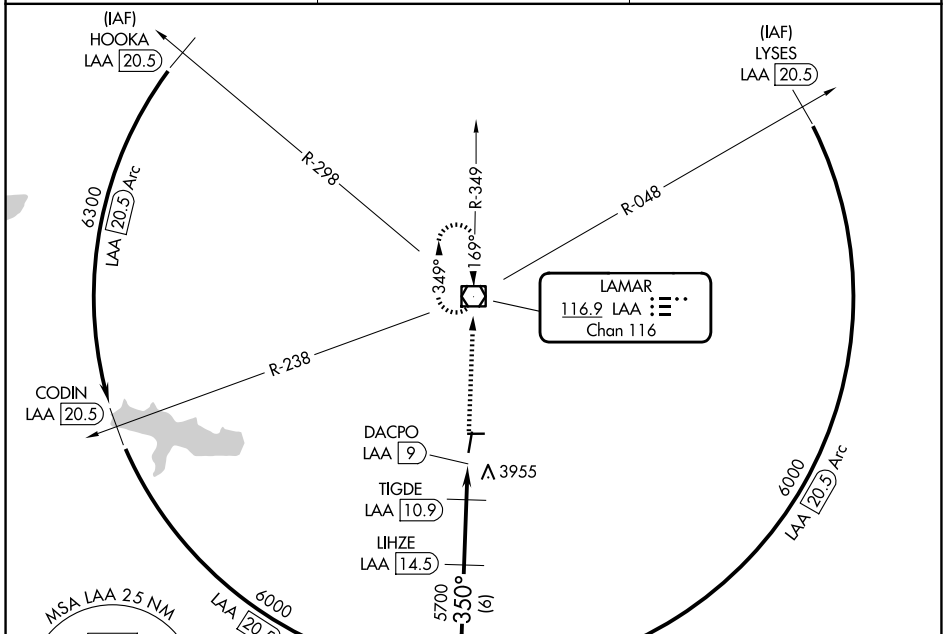
VOR/DME LAA 116.9 Chan 116	APP CRS 350°	Rwy Ldg TDZE Apt Elev	6304 3705 3705
--	------------------------	-----------------------------	---

VOR RWY 36

SOUTHEAST COLORADO RGNL (L.A.A)

DME required.	MISSED APPROACH: Climb to 6000 direct LAA VOR/DME and hold.
Rwy 36 helicopter visibility reduction below 3/4 SM NA.	

ASOS 135.625	DENVER CENTER 133.4 377.175	UNICOM 122.8 (CTAF) 0
------------------------	---------------------------------------	---------------------------------

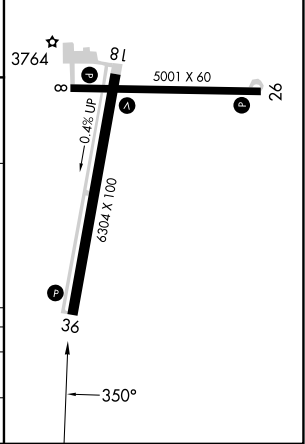
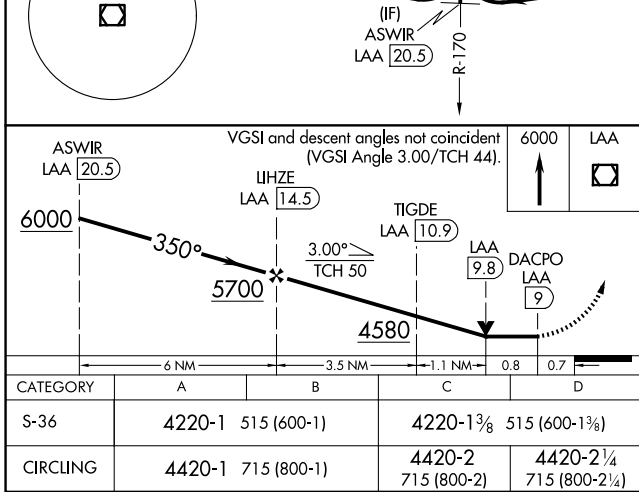


SW-1, 19 MAR 2026 to 16 APR 2026

SW-1, 19 MAR 2026 to 16 APR 2026

ELEV 3705	TDZE 3705
-----------	-----------

REIL Rwys 8, 26, 18, and 36
MIRL Rwys 8-26 and 18-36



LAMAR, COLORADO Amdt 2 27NOV25	38°04'N-102°41'W	SOUTHEAST COLORADO RGNL (L.A.A) VOR RWY 36
-----------------------------------	------------------	--