

WAAS CH <b>78422</b> <b>W34A</b>	APP CRS <b>344°</b>	Rwy Ldg TDZE <b>138</b> Apt Elev <b>141</b>
--	------------------------	---

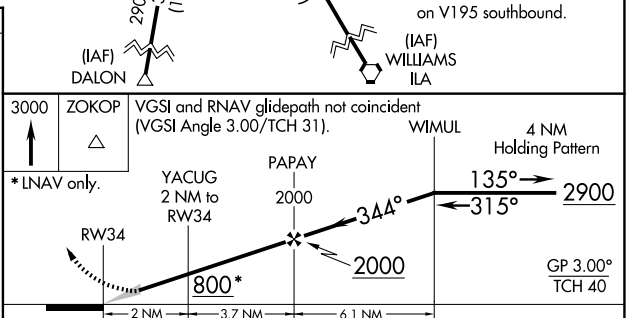
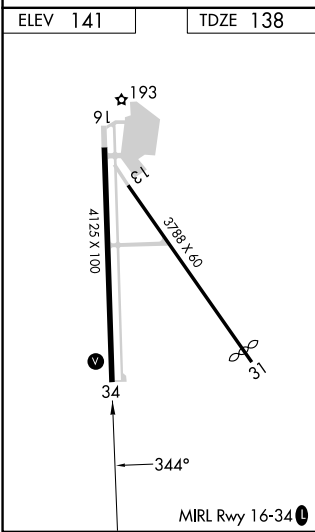
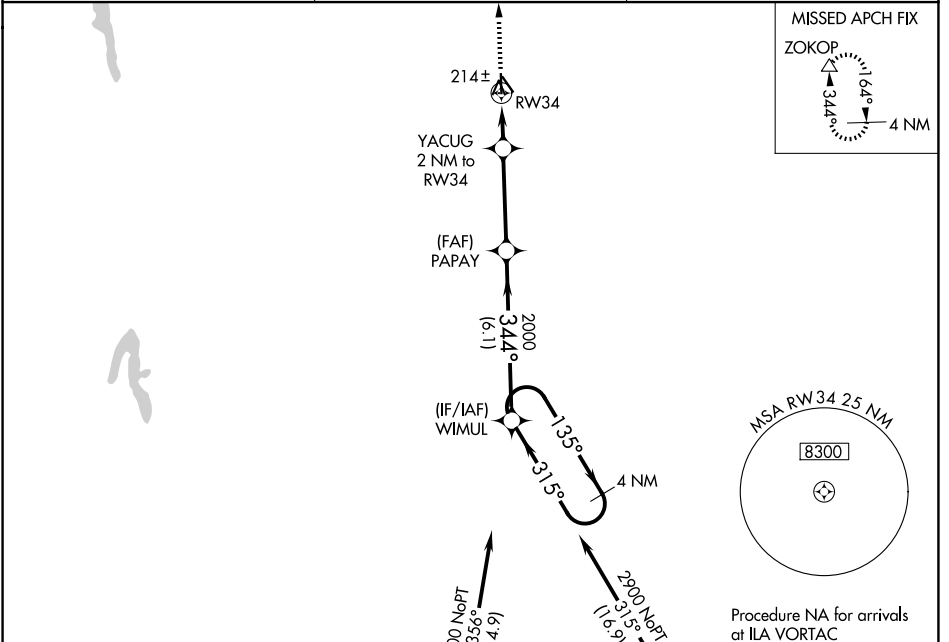
# RNAV (GPS) RWY 34

WILLOWS/GLENN COUNTY (WLW)

**NA** When Orville Muni altimeter setting not received, procedure NA. Baro-VNAV NA. DME/DME RNP-0.3 NA. Use Orville altimeter setting.

MISSED APPROACH: Climb to 3000 direct ZOKOP and hold.

OVE ASOS <b>121.425</b>	OAKLAND CENTER <b>132.2 350.3</b>	UNICOM <b>122.8 (CTAF)</b>
----------------------------	--------------------------------------	-------------------------------



CATEGORY	A	B	C	D
LPV DA	460-1½	322 (400-1½)		NA
LNAV/VNAV DA	460-1½	322 (400-1½)		NA
LNAV MDA	540-1	402 (400-1)	540-1½ 402 (400-1½)	NA
CIRCLING	680-1	539 (600-1)	680-1½ 539 (600-1½)	NA

SW-2, 19 MAR 2026 to 16 APR 2026

SW-2, 19 MAR 2026 to 16 APR 2026