

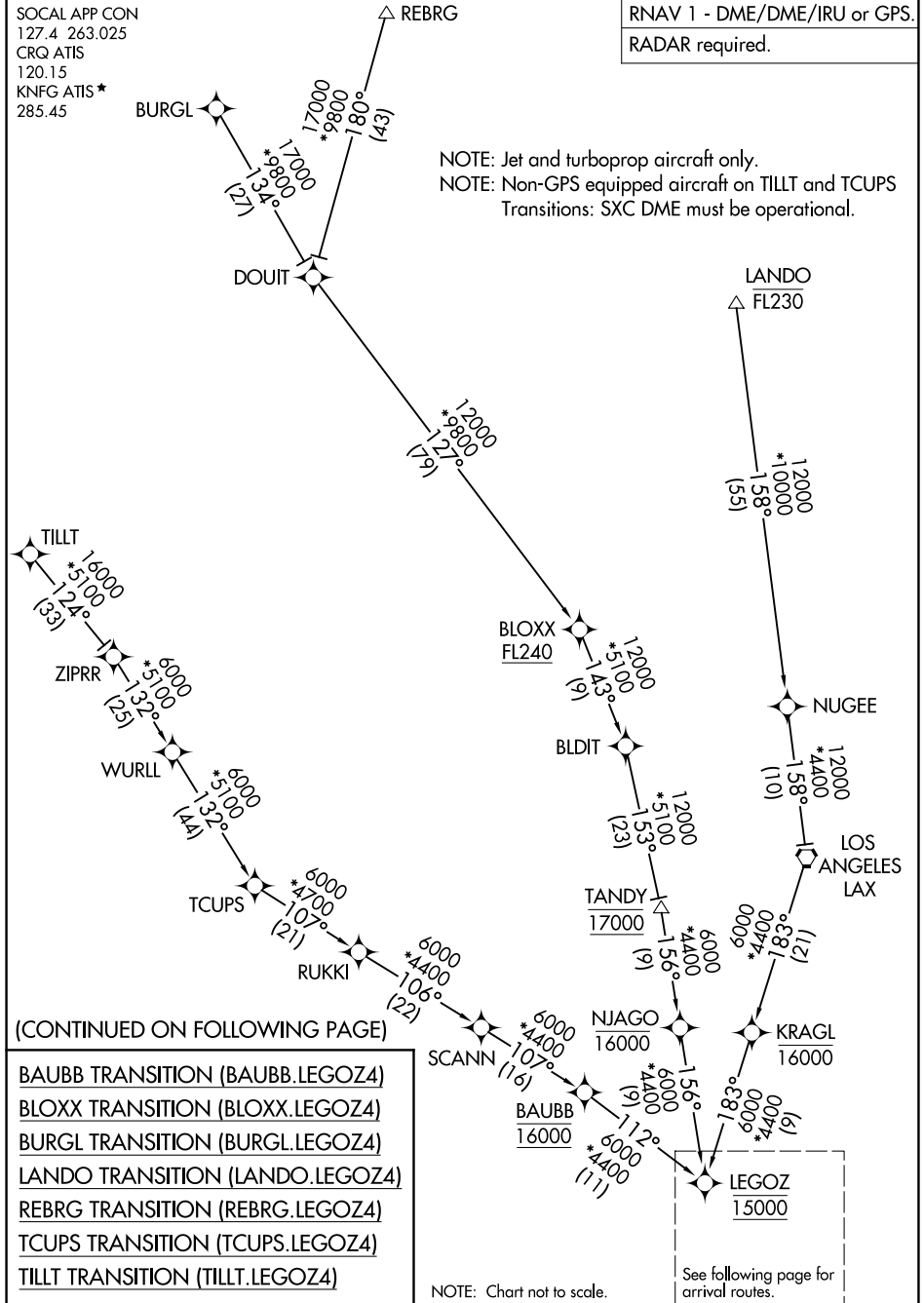
LEGOZ FOUR ARRIVAL (RNAV) Transition Routes

CARLSBAD, CALIFORNIA

SOCAL APP CON
127.4 263.025
CRQ ATIS
120.15
KNFG ATIS*
285.45

RNAV 1 - DME/DME/IRU or GPS.
RADAR required.

NOTE: Jet and turboprop aircraft only.
NOTE: Non-GPS equipped aircraft on TILLT and TCUPS
Transitions: SXC DME must be operational.



(CONTINUED ON FOLLOWING PAGE)

- BAUBB TRANSITION (BAUBB.LEGOZ4)
- BLOXX TRANSITION (BLOXX.LEGOZ4)
- BURGL TRANSITION (BURGL.LEGOZ4)
- LANDO TRANSITION (LANDO.LEGOZ4)
- REBRG TRANSITION (REBRG.LEGOZ4)
- TCUPS TRANSITION (TCUPS.LEGOZ4)
- TILLT TRANSITION (TILLT.LEGOZ4)

NOTE: Chart not to scale.

See following page for arrival routes.

SW-3, 19 MAR 2026 to 16 APR 2026

SW-3, 19 MAR 2026 to 16 APR 2026

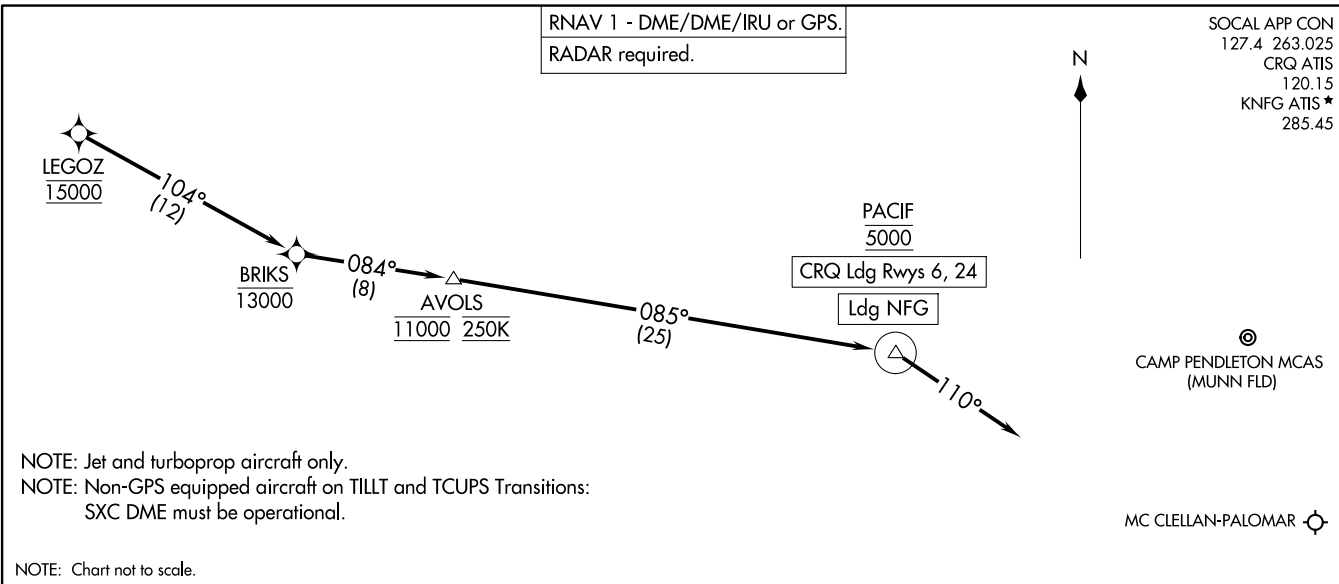
LEGOZ FOUR ARRIVAL (RNAV) Transition Routes

CARLSBAD, CALIFORNIA

(LEGOZ.LEGOZ4) 07AUG25

LEGOZ FOUR ARRIVAL (RNAV) Arrival Routes

CARLSBAD, CALIFORNIA



(LEGOZ.LEGOZ4) 25219

LEGOZ FOUR ARRIVAL (RNAV) Arrival Routes

CARLSBAD, CALIFORNIA

A1-5310 (FAA)

ARRIVAL ROUTE DESCRIPTION

LANDING NFG: From LEGOZ on track 104° to cross BRIKS at or below 13000, then on track 084° to cross AVOLS at 11000 and at 250K, then on track 085° to cross PACIF at 5000, then on track 110°. Expect RADAR vectors to final approach course.

LANDING CRQ RUNWAY 6: From LEGOZ on track 104° to cross BRIKS at or below 13000, then on track 084° to cross AVOLS at 11000 and at 250K, then on track 085° to cross PACIF at 5000, then on track 110°. Expect RNAV (RNP) Z RWY 6 approach or RADAR vectors to final approach course.

LANDING CRQ RUNWAY 24: From LEGOZ on track 104° to cross BRIKS at or below 13000, then on track 084° to cross AVOLS at 11000 and at 250K, then on track 085° to cross PACIF at 5000, then on track 110°. Expect RADAR vectors to final approach course.