

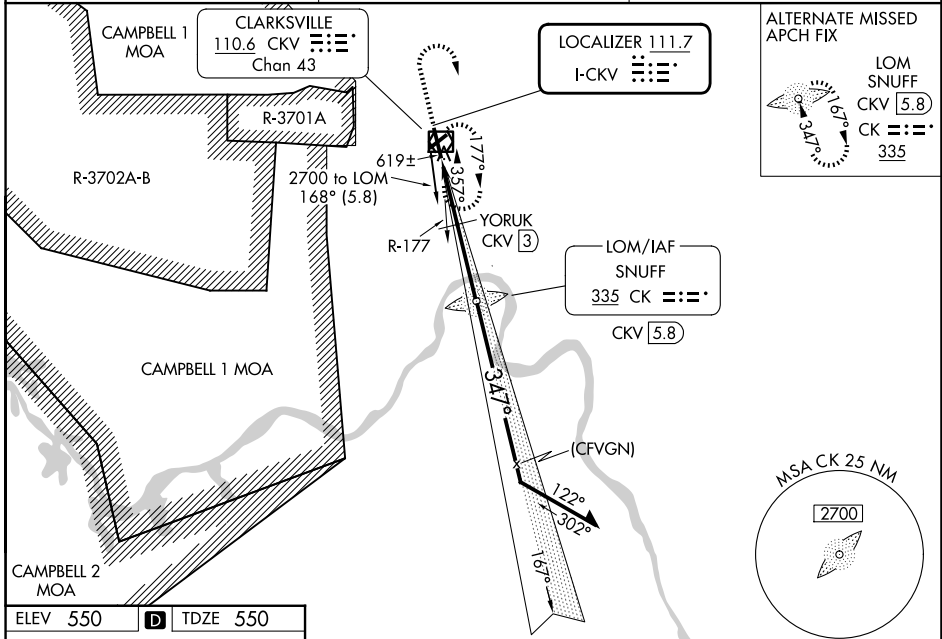
LOC I-CKV <b>111.7</b>	APP CRS <b>347°</b>	Rwy Ldg TDZE Apt Elev	<b>5999</b> <b>550</b> <b>550</b>
---------------------------	------------------------	-----------------------------	---

# LOC RWY 35

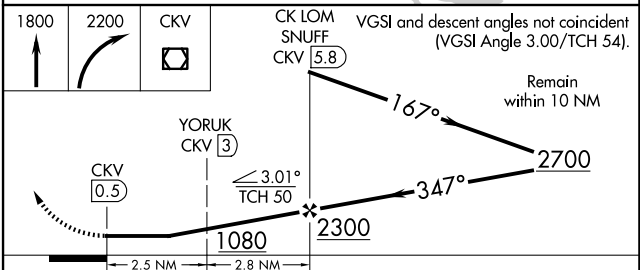
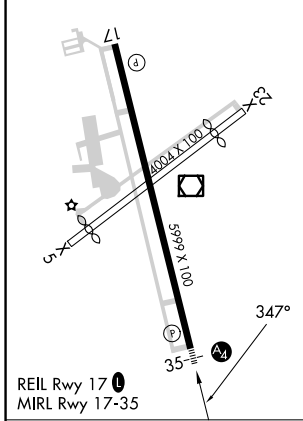
OUTLAW FLD (CKV)

ADF required. RADAR required.	MALS	MISSED APPROACH: Climb to 1800 then climbing right turn to 2200 direct CKV VOR/DME and hold.
▼ Rwy 35 helicopter visibility reduction below 3/4 SM NA. Circling Rwy 17, 23 NA at night. When local altimeter setting not received, use HOP altimeter setting. Circling NA west of Rwy 17-35. *DME from CKV VOR/DME.	Ⓜ	

ASOS <b>134.575</b>	CAMPBELL APP CON <b>134.35 307.025</b>	UNICOM <b>122.8 (CTAF) 0</b>
------------------------	---	---------------------------------



ELEV 550	<b>D</b>	TDZE 550
----------	----------	----------



CATEGORY	A	B	C	D
S-LOC 35	1080-3/4	530 (600-3/4)	1080-1 1/4	530 (600-1 1/4)
CIRCLING	1080-1	530 (600-1)	1080-1 1/2 530 (600-1 1/2)	1200-2 650 (700-2)
YORUK FIX MINIMUMS * (DME REQUIRED)				
S-LOC 35	880-3/4		330 (400-3/4)	
CIRCLING	1000-1 450 (500-1)	1020-1 470 (500-1)	1020-1 1/2 470 (500-1 1/2)	1200-2 650 (700-2)

SE-1, 19 MAR 2026 to 16 APR 2026

SE-1, 19 MAR 2026 to 16 APR 2026