

WAAS CH 86738 W07A	APP CRS 075°	Rwy Ldg TDZE Apt Elev	3502 8 8
--	------------------------	-----------------------------	-------------------------------------

RNAV (GPS) RWY 7

PROVINCETOWN MUNI (PVC)

RNP APCH - GPS.

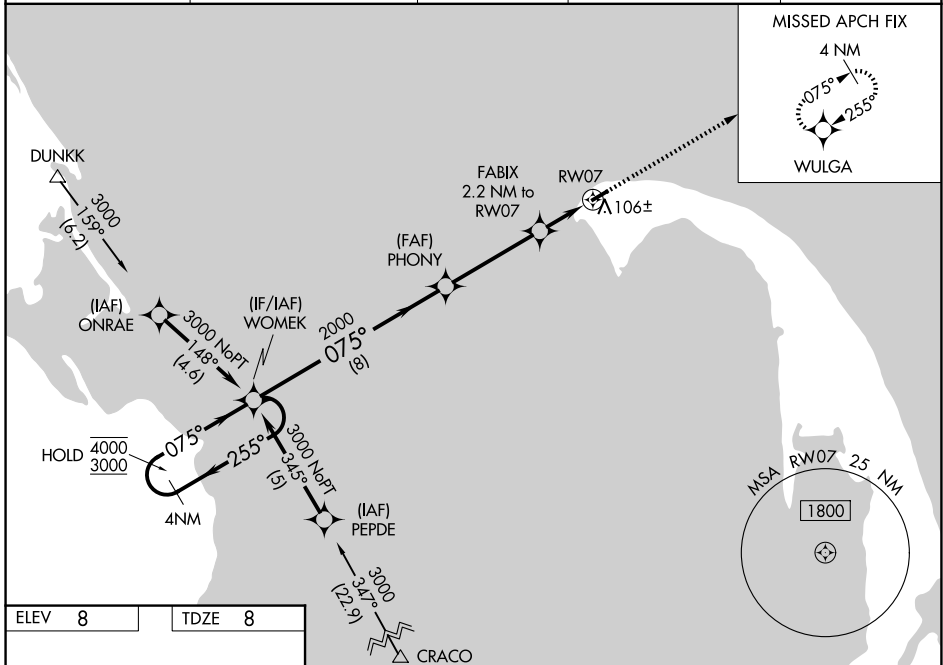
▼ Baro-VNAV and VDP NA when using HYA altimeter setting. Circling Rwy 25 NA at night.
▲ For uncompensated Baro-VNAV systems, LNAV/VNAV NA below -15°C or above 54°C.
 Inop table does not apply to LPV. For inop ALS when using HYA altimeter setting, increase LPV and LNAV/VNAV all Cats visibility to 7/8 SM. When local altimeter setting not received, use HYA altimeter setting: increase LPV DA to 271 feet, increase LNAV/VNAV DA to 331 feet; increase all MDA 80 feet.

MALSF

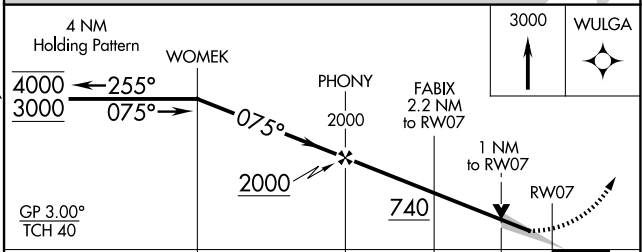
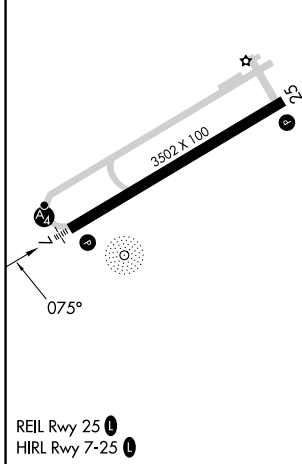


MISSED APPROACH:
Climb to 3000 direct WULGA and hold.

AWOS-3PT 119,275	BOSTON APP CON 118.2	CLNC DEL 120.65	UNICOM 122.8 (CTAF)	122.85 0
----------------------------	--------------------------------	---------------------------	-------------------------------	------------------------



ELEV 8	TDZE 8
---------------	---------------



CATEGORY	A	B	C	D
LPV DA	208-3/4	200 (200-3/4)		NA
LNAV/VNAV DA	268-3/4	260 (300-3/4)		NA
LNAV MDA	360-3/4	352 (400-3/4)		NA
CIRCLING	460-1	660-1		NA
	452 (500-1)	652 (700-1)		

NE-1, 19 MAR 2026 to 16 APR 2026

NE-1, 19 MAR 2026 to 16 APR 2026