

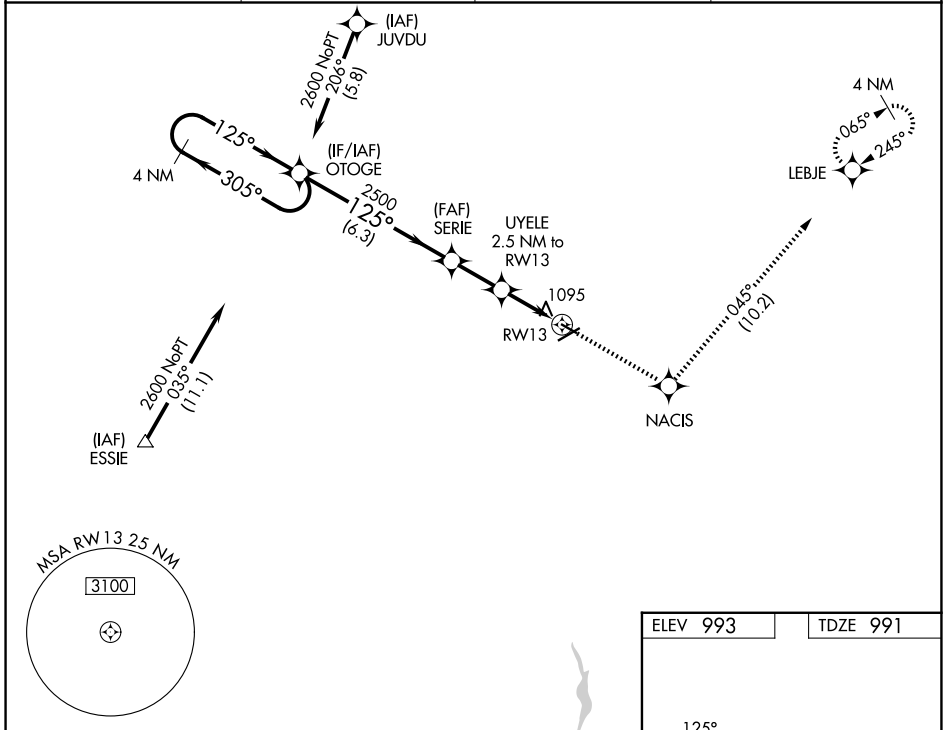
APP CRS	Rwy Ldg	3498
125°	TDZE	991
	Apt Elev	993

RNAV (GPS) RWY 13

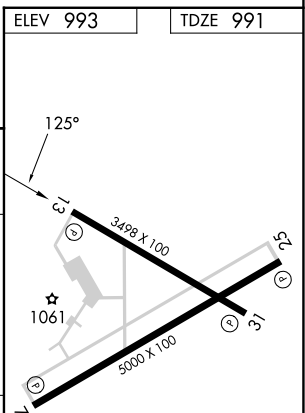
MARION MUNI (MNN)

RNP APCH.	MISSED APPROACH: Climb to 3000 direct NACIS and on track 045° to LEBJE and hold.
<p>▼ Rwy 13 helicopter visibility reduction below 3/4 SM NA. VDP NA when using Ohio State University altimeter setting. When local altimeter setting not received, use Ohio State University altimeter setting: increase all MDAs 100 feet and visibility Cat C/D 3/8 SM.</p>	

ASOS 119.975	CLEVELAND APP CON * 128.35 360.65	CLNC DEL 126.8	UNICOM 122.8 (CTAF) 0
------------------------	---	--------------------------	---------------------------------



VGSi and descent angles not coincident (VGSi Angle 3.00/TCH 21).				3000	NACIS	tr 045°	LEBJE
4 NM Holding Pattern		OTOGE	SERIE	UYELE	RWY 13		
2600		2500	1800	1.1 NM to RWY 13	RWY 13		
6.3 NM		2.1 NM	1.4 NM	1.1 NM			
CATEGORY	A	B	C	D			
LNVA MDA	1360-1 369 (400-1)		1360-1 1/4 369 (400-1 1/4)				
CIRCLING	1480-1 487 (500-1)	1500-1 507 (600-1)	1700-2 707 (800-2)	1820-2 3/4 827 (900-2 3/4)	REIL Rwy 7, 13, 25 and 31 0 MIRL Rwy 7-25 and 13-31 0		



EC-2, 19 MAR 2026 to 16 APR 2026

EC-2, 19 MAR 2026 to 16 APR 2026