

WAAS CH 90206 W24A	APP CRS 236°	Rwy Ldg 4868 TDZE 308 Apt Elev 310
--	------------------------	---

RNAV (GPS) RWY 24

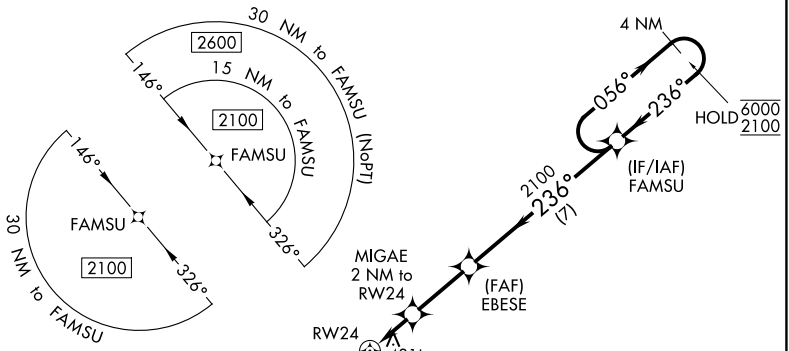
CRISP COUNTY-CORDELE (CKF)

RNP APCH-GPS.

⚠ Rwy 24 helicopter visibility reduction below 1 SM NA. For uncompensated Baro-VNAV systems, LNAV/VNAV NA below -15°C or above 46°C. Straight-in Rwy 24 NA at night, Circling Rwy 6, 24, 28 NA at night.

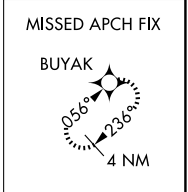
MISSED APPROACH: Climb to 2100 direct BUYAK and hold.

AWOS-3PT 119.325	JACKSONVILLE CENTER 125.75 363.075	UNICOM 123.050 (CTAF) 0
----------------------------	--	-----------------------------------

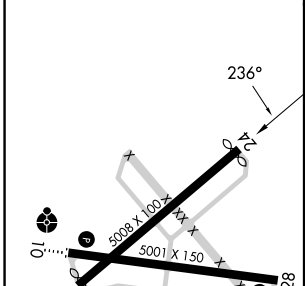
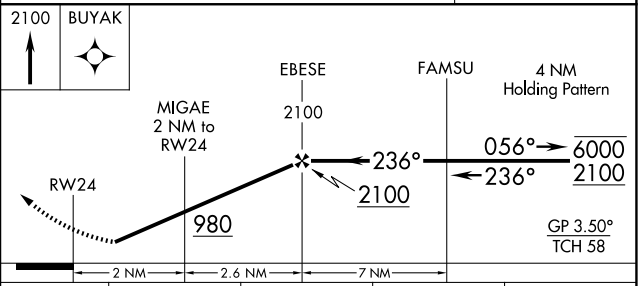


SE-4, 19 MAR 2026 to 16 APR 2026

SE-4, 19 MAR 2026 to 16 APR 2026



ELEV 310	TDZE 308
----------	----------



CATEGORY	A	B	C	D
LPV DA		592-1	284 (300-1)	
LNAV/VNAV DA		700-1½	392 (400-1½)	
LNAV MDA	700-1	392 (400-1)	700-1½	392 (400-1½)
CIRCLING	780-1 470 (500-1)	820-1 510 (600-1)	1040-2 730 (800-2)	1160-2¾ 850 (900-2¾)

MIRL Rwy 10-28 **0**
REIL Rwy 10 and 28 **0**