

GTIKE FIVE DEPARTURE (RNAV)  
 (GTIKES, GTIKE) 27NOV25

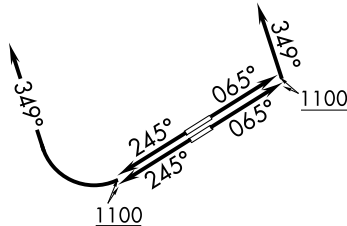
BURKE LAKEFRONT (BKL)  
 CLEVELAND, OHIO

CLEVELAND DEP CON  
 125.35 346.325  
 ATIS  
 125.25  
 CLINC DEL  
 339.8  
 121.9 (when twr closed)  
 GND CON  
 121.9 339.8  
 LAKEFRONT TOWER\*  
 124.3 (CTAF) 339.8

RNAV 1 - DME/DME/IRU or GPS.  
 RADAR required.

**TOP ALTITUDE:  
 ASSIGNED BY ATC**

NOTE: Rwy 6R/24L: Takeoff minimums NA when  
 control tower closed.

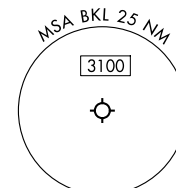
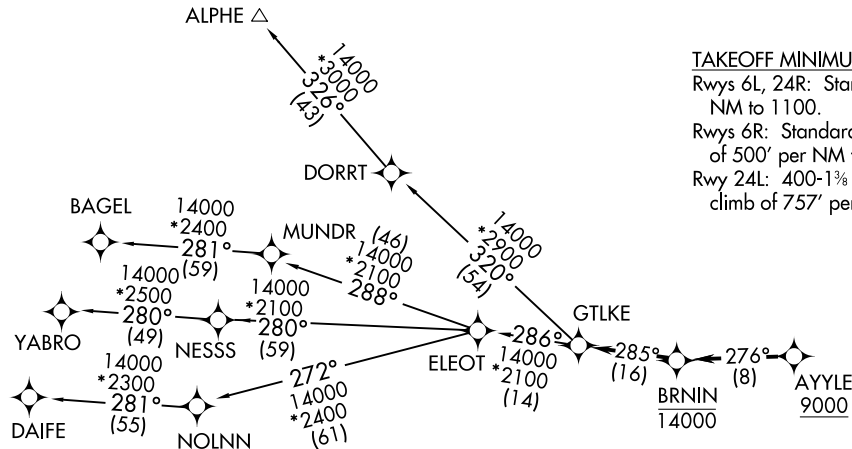


**TAKEOFF MINIMUMS:**

Rwy 6L, 24R: Standard with minimum climb of 500' per  
 NM to 1100.

Rwy 6R: Standard with minimum climb  
 of 500' per NM to 1100. NA when control tower closed.

Rwy 24L: 400-1 $\frac{3}{4}$  or standard with minimum  
 climb of 757' per NM to 1000. NA when control tower closed.



NOTE: Chart not to scale.

(CONTINUED ON FOLLOWING PAGE)

(GTIKES, GTIKE) 25331  
 GTIKE FIVE DEPARTURE (RNAV)

AL-5370 (FAA)

BURKE LAKEFRONT (BKL)  
 CLEVELAND, OHIO

# GTLKE FIVE DEPARTURE (RNAV)



## DEPARTURE ROUTE DESCRIPTION

TAKEOFF RUNWAYS 6L/R: Climb on heading 065° to 1100, then on heading 349° or as assigned by ATC, maintain 2000 (do not climb above 2000) for RADAR vectors to cross AYYLE at or above 9000, thence....

TAKEOFF RUNWAYS 24L/R: Climb on heading 245° to 1100, then right turn heading 349° or as assigned by ATC, maintain 2000 (do not climb above 2000) for RADAR vectors to cross AYYLE at or above 9000, thence....

....on track 276° to cross BRNIN at or below 14000, then on track 285° to GTLKE then on (transition). Maintain ATC assigned altitude, expect filed altitude 10 minutes after departure.

ALPHE TRANSITION (GTLKE5.ALPHE)

BAGEL TRANSITION (GTLKE5.BAGEL)

DAIFE TRANSITION (GTLKE5.DAIFE)

YABRO TRANSITION (GTLKE5.YABRO)

EC-2, 19 MAR 2026 to 16 APR 2026

EC-2, 19 MAR 2026 to 16 APR 2026