

LOC/DME I-SEE <b>110.5</b> Chan 42	APP CRS <b>269°</b>	Rwy Ldg TDZE Apt Elev <b>N/A</b> <b>388</b>
--	------------------------	--

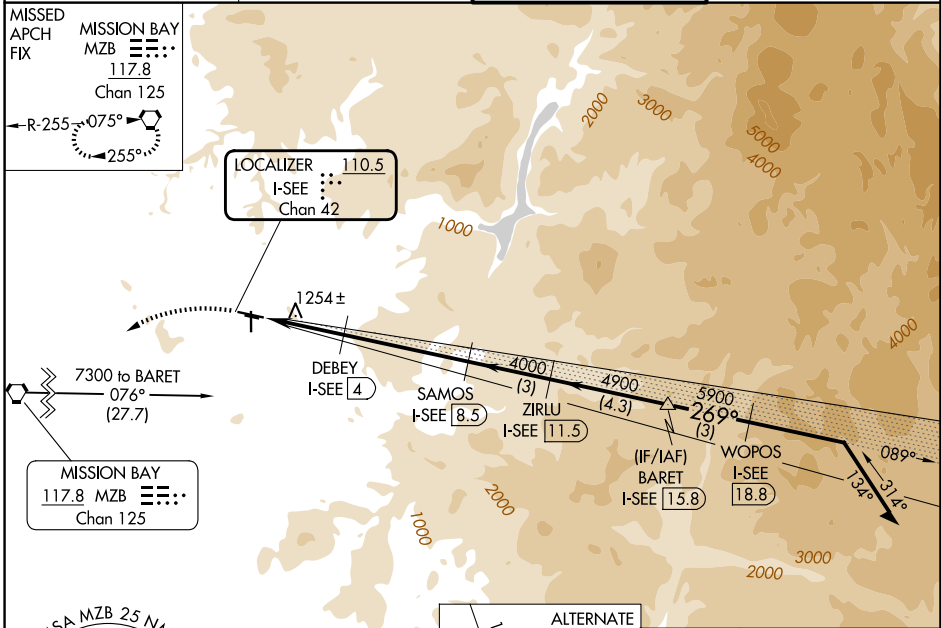
**LOC-D**  
GILLESPIE FLD (SE/E)

DME required.

When local altimeter setting not received, use Miramar MCAS altimeter setting and increase all MDA 40 feet. Circling NA northeast of Rwy 27R-17. Circling Rwy 27R, 35 NA at night.

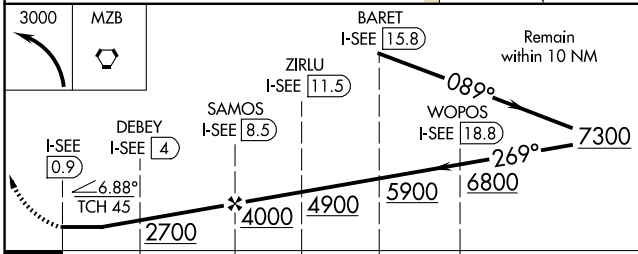
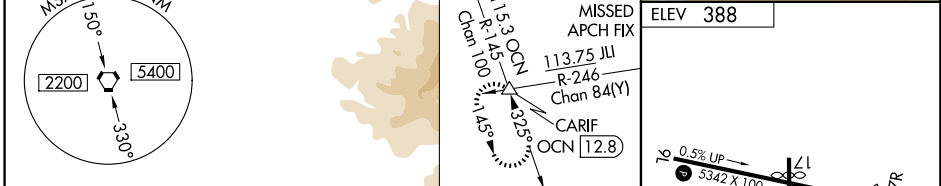
MISSED APPROACH: Climbing left turn to 3000 direct to MZB VORTAC and hold.

ATIS <b>125.45</b>	SOCAL APP CON <b>124.35 279.625</b>	GILLESPIE TOWER★ <b>120.7 (CTAF) 257.8</b>	GND CON <b>121.7</b>
-----------------------	--	---	-------------------------

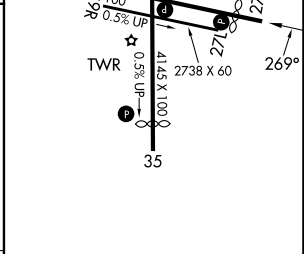
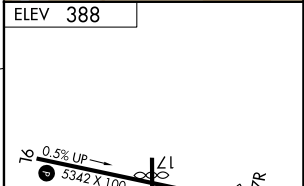


SW-3, 19 MAR 2026 to 16 APR 2026

SW-3, 19 MAR 2026 to 16 APR 2026



CATEGORY	A	B	C	D
CIRCLING	1500-1¼ 1112 (1200-1¼)	1500-1½ 1112 (1200-1½)	1940-3	1552 (1600-3)



MIRL Rwy 9L-27R and 17-35  
REIL Rwy 27R