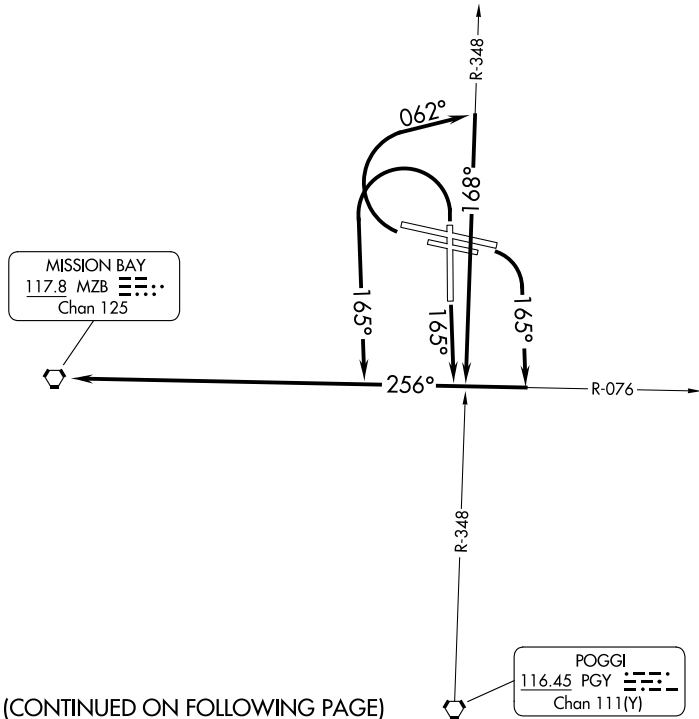


MISSION BAY TWO DEPARTURE (OBSTACLE)

TAKEOFF MINIMUMS

- Rwy 9L: 900-2¾ with minimum climb of 400' per NM to 3600, or 4400-3 for VCOA.
- Rwy 9R: 900-2¾ with minimum climb of 405' per NM to 3600, or 4400-3 for VCOA.
- Rwy 17: Standard with minimum climb of 440' per NM to 1800, or 4400-3 for VCOA.
- Rwys 27L/R: Standard with minimum climb of 500' per NM to 2000, or 4400-3 for VCOA.
- Rwy 35: Standard with minimum climb of 360' per NM to 1900, or 4400-3 for VCOA.

SOCAL DEP CON
124.35 279.625
GILLESPIE TOWER ★
120.7 257.8



(CONTINUED ON FOLLOWING PAGE)

NOTE: Chart not to scale.

DEPARTURE ROUTE DESCRIPTION

TAKEOFF RUNWAYS 9L/R: Climbing right turn on heading 165°, thence

TAKEOFF RUNWAY 17: Climb on heading 165°, thence

TAKEOFF RUNWAYS 27L/R: Climbing right turn on heading 062° and on PGY R-348, thence

TAKEOFF RUNWAY 35: Climbing left turn on heading 165°, thence

. . . . on MVB R-076 to MVB VORTAC.

ALL RUNWAYS: Obtain ATC approval for VCOA when requesting IFR clearance.

Climb in visual conditions to cross Gillespie Fld at or above 4600 before proceeding on assigned route of flight.

SW-3, 19 MAR 2026 to 16 APR 2026

SW-3, 19 MAR 2026 to 16 APR 2026

MISSION BAY TWO DEPARTURE (OBSTACLE)

TAKEOFF OBSTACLE NOTES

Rwy 9L: Terrain 11' from DER, 202' left of centerline, 395' MSL. Terrain 189' from DER, 236' left of centerline, 398' MSL. Vehicle on road beginning 604' from DER, 12' right of centerline, 428' MSL. Sign, bridge, vehicle on road, pole beginning 739' from DER, on centerline, up to 42' AGL/448' MSL. Building 916' from DER, 354' left of centerline, 24' AGL/448' MSL. Tree, pole beginning 940' from DER, 314' left of centerline, up to 468' MSL. Tree 1259' from DER, 676' right of centerline, 451' MSL. Tree, pole, building, vehicle on road beginning 1287' from DER, 4' right of centerline, up to 480' MSL. Tree, building, pole beginning 1413' from DER, 420' left of centerline, up to 486' MSL. Tree, poles beginning 1423' from DER, 176' left of centerline, up to 499' MSL. Tree 1630' from DER, 620' left of centerline, 519' MSL. Tree, poles beginning 1634' from DER, 8' left of centerline, up to 522' MSL. Poles beginning 2125' from DER, 39' right of centerline, up to 42' AGL/485' MSL. Pole 2226' from DER, 19' right of centerline, 43' AGL/488' MSL. Trees, poles beginning 2333' from DER, 55' right of centerline, up to 509' MSL. Tree, poles, transmission line beginning 2601' from DER, 1' left of centerline, up to 530' MSL. Trees, transmission line, poles, building beginning 2949' from DER, 88' left of centerline, up to 566' MSL. Tree, poles beginning 3042' from DER, 26' right of centerline, up to 532' MSL. Poles beginning 3611' from DER, 246' left of centerline, up to 44' AGL/575' MSL. Poles, transmission line beginning 3802' from DER, 119' left of centerline, up to 43' AGL/583' MSL. Poles, transmission line beginning 3920' from DER, 38' left of centerline, up to 43' AGL/589' MSL. Transmission line, poles beginning 4371' from DER, 362' left of centerline, up to 62' AGL/594' MSL. Poles beginning 4389' from DER, 131' right of centerline, up to 45' AGL/533' MSL. Tree, poles beginning 4443' from DER, 14' left of centerline, up to 624' MSL. Pole 4576' from DER, 53' right of centerline, 45' AGL/541' MSL. Poles beginning 4720' from DER, 102' right of centerline, up to 50' AGL/545' MSL. Transmission line, pole beginning 5111' from DER, 246' right of centerline, up to 55' AGL/548' MSL. Poles beginning 5145' from DER, 340' left of centerline, up to 39' AGL/641' MSL. Tree, poles beginning 5412' from DER, 5' left of centerline, up to 654' MSL. Transmission line 5476' from DER, 374' right of centerline, 55' AGL/552' MSL. Tree, poles beginning 5712' from DER, 23' left of centerline, up to 672' MSL. Trees, poles, transmission line beginning 5782' from DER, 67' right of centerline, up to 628' MSL. Pole 1.1 NM from DER, 2123' left of centerline, 40' AGL/1219' MSL. Tower 1.1 NM from DER, 2086' left of centerline, 60' AGL/1236' MSL. Tower, poles, trees, terrain, fence, vegetation, transmission lines beginning 1.1 NM from DER, 51' left of centerline, up to 63' AGL/1242' MSL. Tree 1.1 NM from DER, 523' right of centerline, 672' MSL. Pole 1.1 NM from DER, 2249' right of centerline, 37' AGL/689' MSL. Transmission line 1.2 NM from DER, 1980' right of centerline, 38' AGL/771' MSL. Poles beginning 1.2 NM from DER, 1962' right of centerline, up to 57' AGL/774' MSL. Building, pole beginning 1.2 NM from DER, 517' right of centerline, up to 29' AGL/813' MSL. Trees, poles, transmission lines beginning 1.2 NM from DER, 52' right of centerline, up to 824' MSL.

Rwy 9R: Pole 921' from DER, 521' right of centerline, 42' AGL/432' MSL. Vehicle on road 1544' from DER, 404' left of centerline, 428' MSL. Transmission line, sign beginning 1669' from DER, 24' right of centerline, up to 51' AGL/452' MSL. Vehicle on road 1827' from DER, 409' left of centerline, 430' MSL. Building 1855' from DER, 772' left of centerline, 24' AGL/448' MSL. Trees, poles beginning 1879' from DER, 732' left of centerline, up to 468' MSL. Poles beginning 1960' from DER, 67' right of centerline, up to 60' AGL/455' MSL. Tower, tree beginning 2042' from DER, 258' right of centerline, up to 65' AGL/459' MSL. Tree 2226' from DER, 173' left of centerline, 480' MSL. Tree, pole, building beginning 2352' from DER, 264' left of centerline, up to 486' MSL. Tree, pole beginning 2363' from DER, 594' left of centerline, up to 499' MSL. Tree, poles beginning 2490' from DER, 41' right of centerline, up to 480' MSL. Tree 2569' from DER, 1038' left of centerline, 519' MSL. Trees, poles, vehicle on road beginning 2573' from DER, 92' left of centerline, up to 522' MSL. Trees, poles, transmission line beginning 3540' from DER, 4' left of centerline, up to 530' MSL. Tree, pole beginning 3633' from DER, 82' right of centerline, up to 505' MSL. Trees, poles, transmission line beginning 3888' from DER, 45' left of centerline, up to 566' MSL. Poles, transmission line beginning 4572' from DER, 259' left of centerline, up to 38' AGL/567' MSL. Poles, transmission line beginning 4885' from DER, 116' left of centerline, up to 43' AGL/584' MSL. Transmission line, poles beginning 5310' from DER, 288' left of centerline, up to 62' AGL/594' MSL. Tree, poles, transmission line beginning 5382' from DER, 173' left of centerline, up to 624' MSL. Poles beginning 1 NM from DER, 118' left of centerline, up to 39' AGL/641' MSL. Tree, poles, transmission line beginning 1 NM from DER, 44' left of centerline, up to 654' MSL. Trees, poles beginning 1 NM from DER, 51' left of centerline, up to 672' MSL. Trees, poles, transmission line beginning 1.1 NM from DER, 16' right of centerline, up to 628' MSL. Pole 1.2 NM from DER, 2543' left of centerline, 40' AGL/1219' MSL. Tower 1.2 NM from DER, 2507' left of centerline, 60' AGL/1236' MSL. Tower, trees, poles, terrain, fence, vegetation, transmission lines beginning 1.2 NM from DER, 11' left of centerline, up to 63' AGL/1242' MSL. Tree 1.3 NM from DER, 103' right of centerline, 672' MSL. Pole 1.3 NM from DER, 1829' right of centerline, 37' AGL/689' MSL. Transmission line 1.3 NM from DER, 1559' right of centerline, 38' AGL/771' MSL. Poles beginning 1.3 NM from DER, 1541' right of centerline, up to 57' AGL/774' MSL. Building, pole beginning 1.3 NM from DER, 97' right of centerline, up to 29' AGL/813' MSL. Trees, poles, beginning 1.3 NM from DER, 193' right of centerline, up to 824' MSL.

(CONTINUED ON FOLLOWING PAGE)

MISSION BAY TWO DEPARTURE (OBSTACLE)

SW-3, 19 MAR 2026 to 16 APR 2026

SW-3, 19 MAR 2026 to 16 APR 2026

(NOTES CONTINUED)

TAKEOFF OBSTACLE NOTES

Rwy 17: Fence 14' from DER, 43' right of centerline, 9' AGL/393' MSL.
 Pole 36' from DER, 456' right of centerline, 40' AGL/424' MSL.
 Poles, building beginning 50' from DER, 123' right of centerline, up to 45' AGL/428' MSL.
 Poles, buildings beginning 266' from DER, 149' left of centerline, up to 42' AGL/429' MSL.
 Trees, pole, building beginning 390' from DER, 33' right of centerline, up to 457' MSL.
 Trees, pole, building beginning 970' from DER, 57 left of centerline, up to 470' MSL.
 Tree, building beginning 1145' from DER, 377' right of centerline, up to 473' MSL.
 Trees, building, poles beginning 1618' from DER, 54' left of centerline, up to 472' MSL.
 Pole 1.4 NM from DER, 2367' right of centerline, 43' AGL/614' MSL.
 Pole 1.5 NM from DER, 2346' right of centerline, 43' AGL/658' MSL.
 Poles beginning 1.6 NM from DER, 2319' right of centerline, up to 38' AGL/746' MSL.

Rwy 27L: Tree 1548' from DER, 765' right of centerline, 428' MSL.
 Trees beginning 2189' from DER, 700' right of centerline, up to 453' MSL.
 Tree 2943' from DER, 655' left of centerline, 441' MSL.
 Tree, building beginning 3732' from DER, 464' left of centerline, up to 470' MSL.
 Tree, pole beginning 5745' from DER, 827' left of centerline, up to 572' MSL.
 Vegetation 1.4 NM from DER, 1507' left of centerline, 722' MSL.

Rwy 27R: Tree, poles beginning 178' from DER, 235' right of centerline, up to 411' MSL.
 Vehicle on road 510' from DER, 412' left of centerline, 379' MSL.
 Trees, poles beginning 525' from DER, 38' right of centerline, up to 453' MSL.
 Pole 799' from DER, 83' left of centerline, 41' AGL/390' MSL.
 Trees, poles beginning 2068' from DER, 19' left of centerline, up to 470' MSL.
 Tree, tower beginning 4080' from DER, 978' left of centerline, 572' MSL.
 Vegetation 1.2 NM from DER, 1924' left of centerline, 722' MSL.

Rwy 35: Pole 34' from DER, 202' right of centerline, 21' AGL/388' MSL.
 Pole, building beginning 51' from DER, 248' right of centerline, up to 29' AGL/399' MSL.
 Trees, building, poles beginning 231' from DER, 29' right of centerline, up to 447' MSL.
 Poles beginning 381' from DER, 336' left of centerline, up to 42' AGL/405' MSL.
 Tree 1107' from DER, 118' left of centerline, 408' MSL.
 Tree 1145' from DER, 581' left of centerline, 427' MSL.
 Tree 1486' from DER, 293' left of centerline, 438' MSL.
 Trees beginning 1487' from DER, 344' left of centerline, up to 439' MSL.

SW-3, 19 MAR 2026 to 16 APR 2026

SW-3, 19 MAR 2026 to 16 APR 2026