

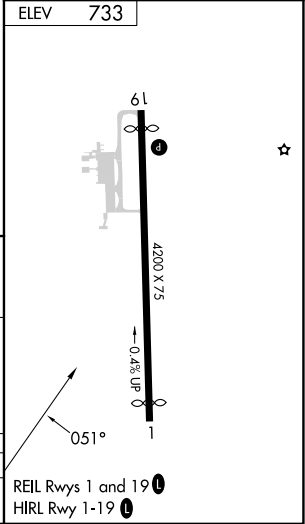
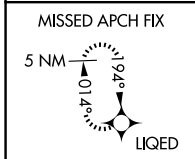
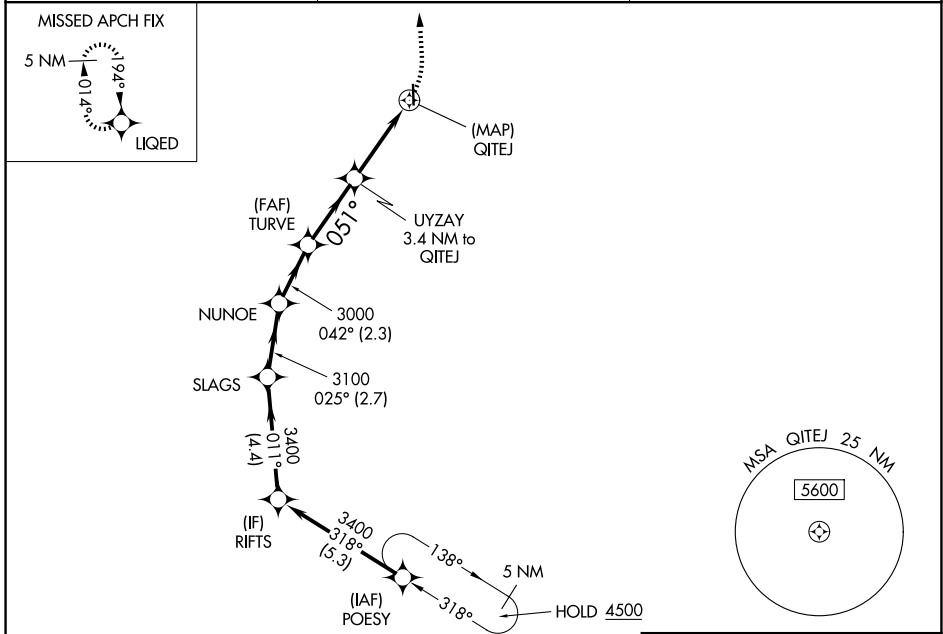
APP CRS	Rwy Ldg	N/A
051°	TDZE	N/A
	Apt Elev	733

RNAV (GPS)-A

MORRISVILLE-STOWE STATE (MVL)

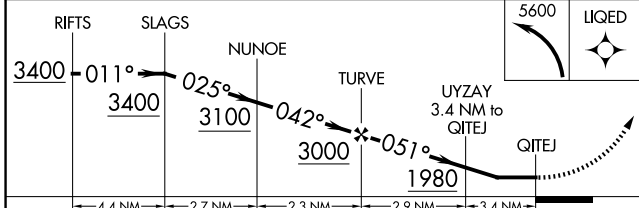
RNP APCH.	MISSED APPROACH: Climbing left turn to 5600 direct LIQED and hold, continue climb-in-hold to 5600.
<p>Circling NA for Cat C east of Rwy 1-19. When local altimeter setting not received, use Burlington altimeter setting and increase all MDAs 120 feet.</p> <p>-19°C</p>	

ASOS 135.625	BOSTON CENTER 135.7 282.2	UNICOM 122.8 (CTAF)
------------------------	-------------------------------------	-------------------------------



Procedure NA for arrival on MPV VOR/DME
airway radials 317 CW 037.

MONTPELIER MPV



	A	B	C	D
CATEGORY				NA
CIRCLING	1620-1¼ 887 (900-1¼)	1780-1½ 1047 (1100-1½)	1980-3 1247 (1300-3)	

NE-1, 19 MAR 2026 to 16 APR 2026

NE-1, 19 MAR 2026 to 16 APR 2026