

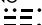
# RICHY SEVEN DEPARTURE

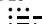
AL-5416 (FAA)

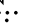
LAKE TAHOE (TVL)  
SOUTH LAKE TAHOE, CALIFORNIA

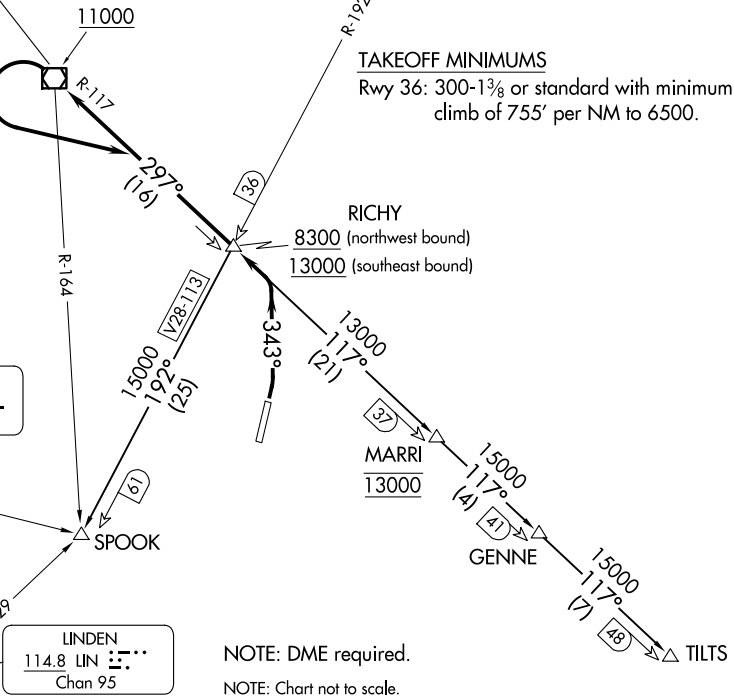
**TOP ALTITUDE:  
ASSIGNED BY ATC**

CLNC DEL 134.3  
OAKLAND CENTER 127.95 316.1  
CTAF 122.85

MUSTANG  
117.9 FMG   
Chan 126

PALISADES  
113.2 SWR   
Chan 79

HANGTOWN  
115.5 HW   
Chan 102



**TAKEOFF MINIMUMS**

Rwy 36: 300-1 $\frac{3}{8}$  or standard with minimum climb of 755' per NM to 6500.

NOTE: DME required.  
NOTE: Chart not to scale.

## DEPARTURE ROUTE DESCRIPTION

**TAKEOFF RUNWAY 36:** Climbing left turn on heading 343° to intercept the SWR VOR/DME R-117 northwest bound. Cross RICHY/SWR 16 DME at or above 8300, cross SWR at or above 11000. Thence. . .

. . . on assigned route (Aircraft cleared on a transition turn left to intercept the SWR R-117 southeast bound to cross RICHY at or above 13000). Maintain ATC assigned altitude.

**GENNE TRANSITION (RICHY7.GENNE):** From over RICHY INT on SWR R-117 to GENNE.

**MARRI TRANSITION (RICHY7.MARRI):** From over RICHY INT on SWR R-117 to MARRI.

**SPOOK TRANSITION (RICHY7.SPOOK):** From over RICHY INT on FMG R-192 to SPOOK INT.

**TILTS TRANSITION (RICHY7.TILTS):** From over RICHY INT on SWR R-117 to TILTS.

# RICHY SEVEN DEPARTURE

SW-2, 19 MAR 2026 to 16 APR 2026

SW-2, 19 MAR 2026 to 16 APR 2026