

EL DORADO ONE DEPARTURE

CLNC DEL
125.6
CTAF
122.7
HOUSTON DEP CON
134.45 284.0

**TOP ALTITUDE:
ASSIGNED BY ATC**

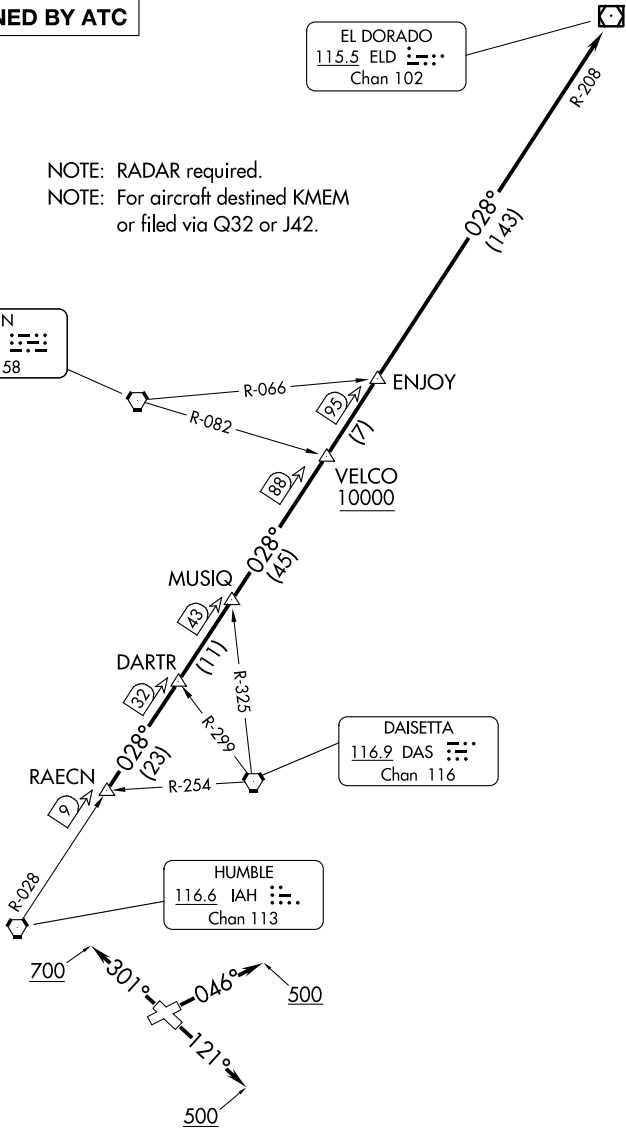
EL DORADO
115.5 ELD :
Chan 102

NOTE: RADAR required.
NOTE: For aircraft destined KMEM
or filed via Q32 or J42.

LUFKIN
112.1 LFK :
Chan 58

DAISETTA
116.9 DAS :
Chan 116

HUMBLE
116.6 IAH :
Chan 113



TAKEOFF MINIMUMS
Rwys 5, 12, 23, 30: Standard.

NOTE: Chart not to scale.

(CONTINUED ON FOLLOWING PAGE)

SC-5, 19 MAR 2026 to 16 APR 2026

SC-5, 19 MAR 2026 to 16 APR 2026

EL DORADO ONE DEPARTURE



DEPARTURE ROUTE DESCRIPTION

TAKEOFF RUNWAY 5: Climb on heading 046° to 500 before turning. When entering controlled airspace, climb on assigned heading for RADAR vectors to RAECN INT. Maintain ATC assigned altitude. Expect filed altitude 10 minutes after departure, thence. . . .

TAKEOFF RUNWAY 12: Climb on heading 121° to 500 before turning. When entering controlled airspace, climb on assigned heading for RADAR vectors to RAECN INT. Maintain ATC assigned altitude. Expect filed altitude 10 minutes after departure, thence. . . .

TAKEOFF RUNWAY 23: When entering controlled airspace, climb on assigned heading for RADAR vectors to RAECN INT. Maintain ATC assigned altitude. Expect filed altitude 10 minutes after departure, thence. . . .

TAKEOFF RUNWAY 30: Climb on heading 301° to 700 before turning. When entering controlled airspace, climb on assigned heading for RADAR vectors to RAECN INT. Maintain ATC assigned altitude. Expect filed altitude 10 minutes after departure, thence. . . .

. . . .on IAH R-028 and the ELD R-208 to ELD VOR/DME, cross VELCO INT at or above 10000.

SC-5, 19 MAR 2026 to 16 APR 2026

SC-5, 19 MAR 2026 to 16 APR 2026