

WAAS CH <b>97723</b> <b>W22A</b>	APP CRS <b>223°</b>	Rwy Ldg <b>5104</b> TDZE <b>649</b> Apt Elev <b>650</b>
--	------------------------	---

# RNAV (GPS) RWY 22

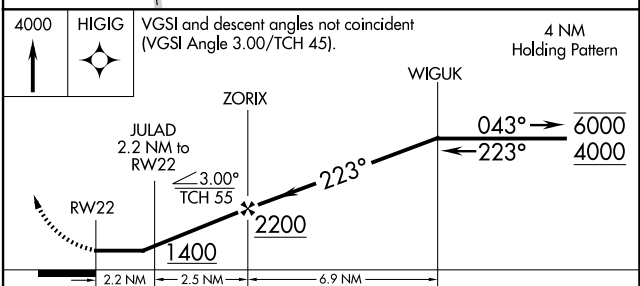
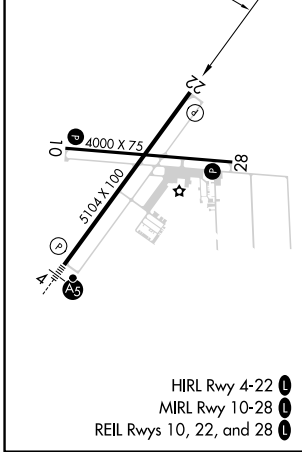
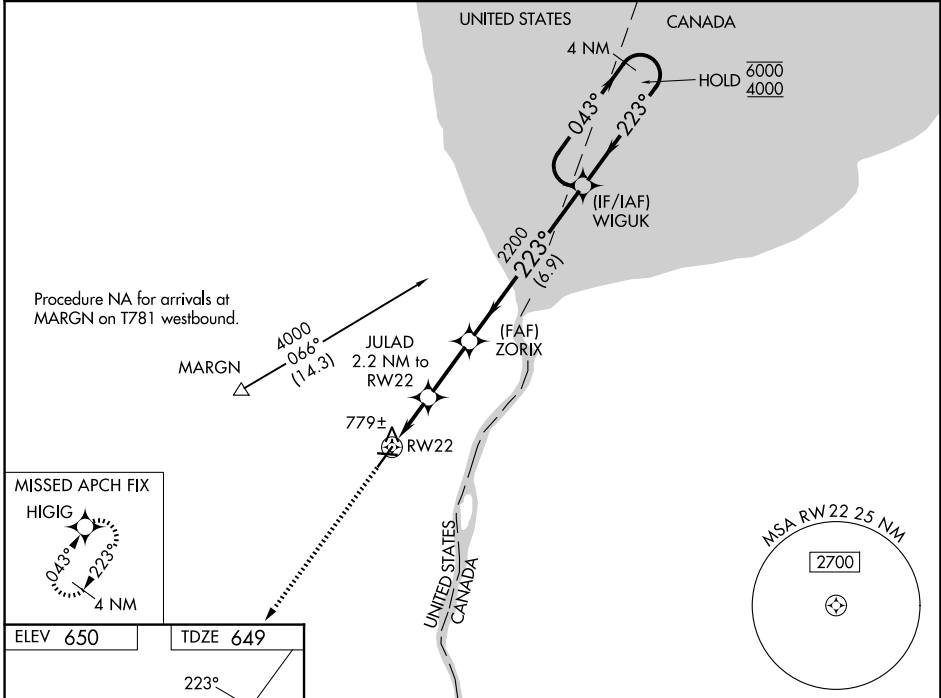
ST CLAIR COUNTY INTL (PHN)

RNP APCH.

**▼** Rwy 22 helicopter visibility reduction below 1 SM NA.  
**▲** Straight-in Rwy 22 NA at night, Circling Rwy 10, 22, 28 NA at night.

MISSED APPROACH: Climb to 4000 direct HIGIG and hold, continue climb-in-hold to 4000.

AWOS-3P <b>118.375</b>	SELFPRIDGE APP CON ★ <b>119.6 391.9</b>	UNICOM <b>123.05 (CTAF) 0</b>
---------------------------	--	----------------------------------



ELEV 650	TDZE 649
CATEGORY	A B C D
LP MDA	1020-1 371 (400-1)
LP MDA	1040-1 391 (400-1) 1040-1½ 391 (400-1½)
CIRCLING	1160-1 510 (600-1) 1260-1¾ 610 (700-1¾) 1260-2 610 (700-2)

EC-1, 19 MAR 2026 to 16 APR 2026

EC-1, 19 MAR 2026 to 16 APR 2026