

WAAS CH 99626 W18A	APP CRS 176°	Rwy Idg 3907 TDZE 757 Apt Elev 758
--	------------------------	---

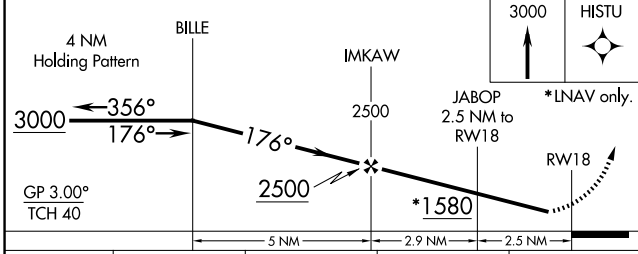
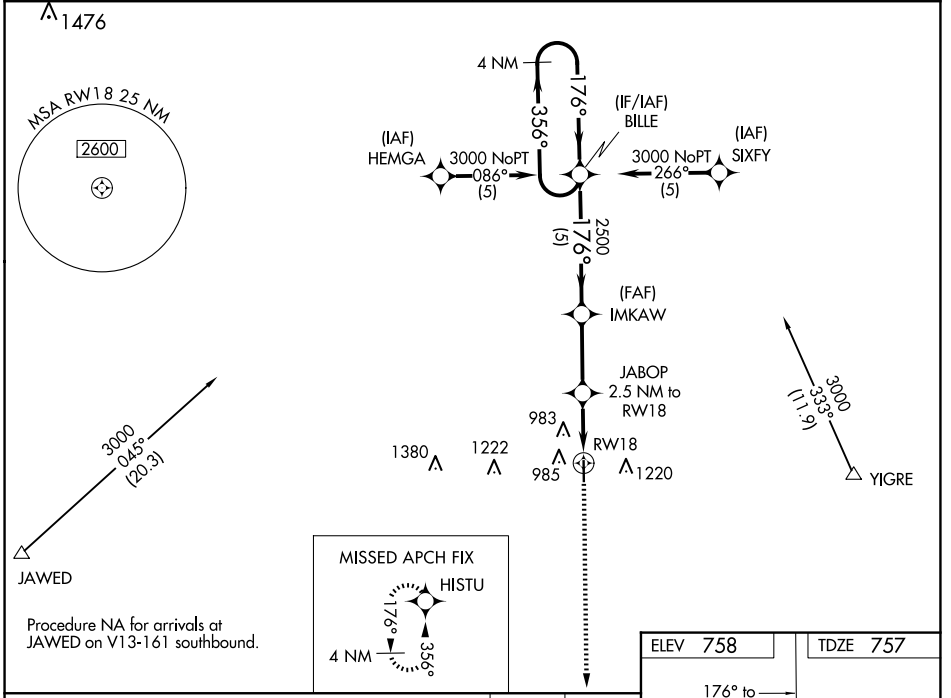
RNAV (GPS) RWY 18

TRENTON MUNI (TRX)

NA Baro-VNAV NA. Use Chillicothe altimeter setting; when not received, use Kirksville altimeter setting and increase LPV DA to 1191 feet and all visibilities $\frac{3}{8}$ SM, LNAV/VNAV DA to 1341 feet and all visibilities $\frac{1}{4}$ SM; increase all MDAs 100 feet and Circling Cat B visibility $\frac{1}{4}$ SM. DME/DME RNP-0.3 NA. Helicopter visibility reduction below $\frac{3}{4}$ SM NA.

MISSED APPROACH: Climb to 3000 direct HISTU and hold.

KANSAS CITY CENTER 125.25 235.975	UNICOM 122.8 (CTAF) 0
---	---------------------------------



ELEV 758	TDZE 757
176° to RW18	
81	4307 X 75
36	
MIRL Rwy 18-36 0	REIL Rwy 18 and 36 0

CATEGORY	A	B	C	D
LPV DA	1098-1 $\frac{1}{8}$	341 (400-1 $\frac{1}{8}$)		NA
LNAV/VNAV DA	1248-1 $\frac{3}{4}$	491 (500-1 $\frac{3}{4}$)		NA
LNAV MDA	1180-1	423 (500-1)		NA
CIRCLING	1340-1 582 (600-1)	1700-1 $\frac{1}{4}$ 942 (1000-1 $\frac{1}{4}$)		NA

NC-3, 19 MAR 2026 to 16 APR 2026

NC-3, 19 MAR 2026 to 16 APR 2026