

WAAS CH <b>63126</b> <b>W36A</b>	APP CRS <b>356°</b>	Rwy Idg <b>4307</b> TDZE <b>757</b> Apt Elev <b>758</b>
--	------------------------	---

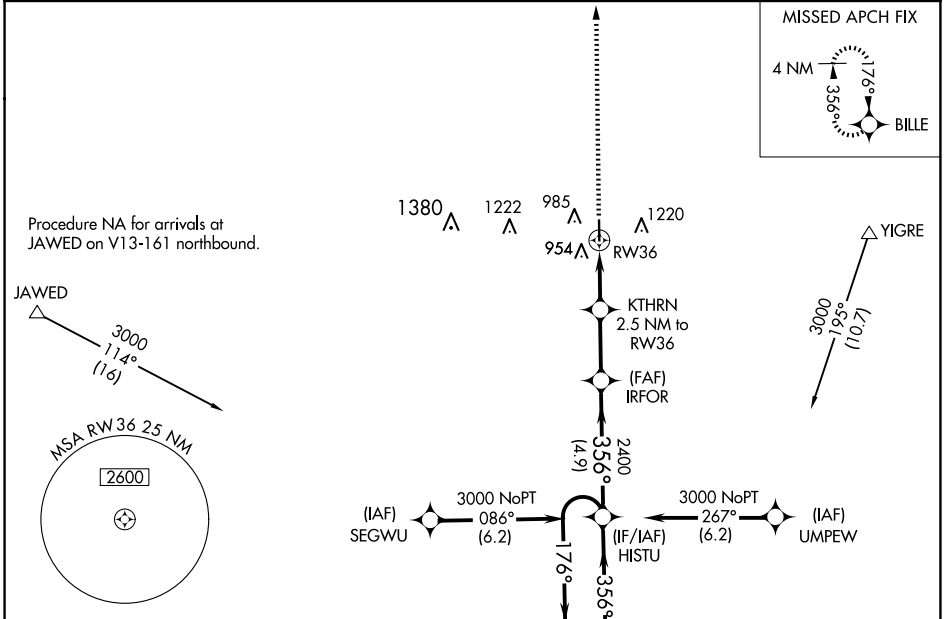
# RNAV (GPS) RWY 36

TRENTON MUNI (TRX)

**▼** When VGSI inop, Circling Rwy 18 NA at night. Baro-VNAV NA. Use Chillicothe altimeter setting; when not received, use Kirksville altimeter setting and increase LPV DA to 1175 feet and all visibilities ¼ SM, LNAV/VNAV DA to 1288 feet and all visibilities ⅓ SM; increase all MDAs 100 feet and Circling Cat B visibility ¼ SM. DME/DME RNP-0.3 NA.  
**▲ NA** Visibility reduction by helicopters NA.

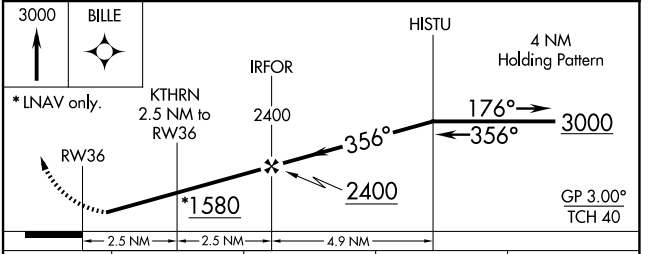
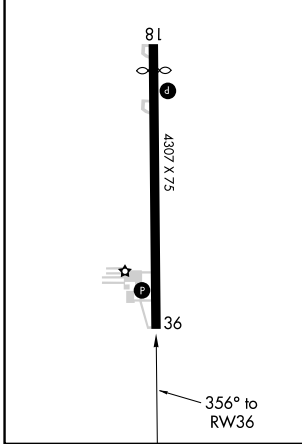
MISSED APPROACH: Climb to 3000 direct BILLE and hold.

KANSAS CITY CENTER <b>125.25 235.975</b>	UNICOM <b>122.8 (CTAF) 1</b>
---	---------------------------------



ELEV 758	TDZE 757
----------	----------

MIRL Rwy 18-36 **1**  
 REIL Rwy 18 and 36 **1**



CATEGORY	A	B	C	D
LPV DA	1082-1 1/8	325 (400-1 1/8)		NA
LNAV/DA VNAV	1195-1 1/2	438 (500-1 1/2)		NA
LNAV MDA	1320-1	563 (600-1)		NA
CIRCLING	1340-1 582 (600-1)	1700-1 1/4 942 (1000-1 1/4)		NA

NC-3, 19 MAR 2026 to 16 APR 2026

NC-3, 19 MAR 2026 to 16 APR 2026