

# LUFKIN FOUR DEPARTURE

HOUSTON, TEXAS

HOUSTON DEP CON  
 119.7 281.4  
 ATIS  
 128.375  
 CLNC DEL  
 119.45  
 GND CON  
 121.8 239.0  
 HOOKS TOWER ★  
 127.4 354.1 (E)  
 118.4 (CTAF) 354.1 (W)

**TOP ALTITUDE:  
 ASSIGNED BY ATC**

LITTLE ROCK  
 115.1 LIT  
 Chan 98

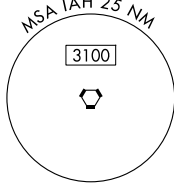
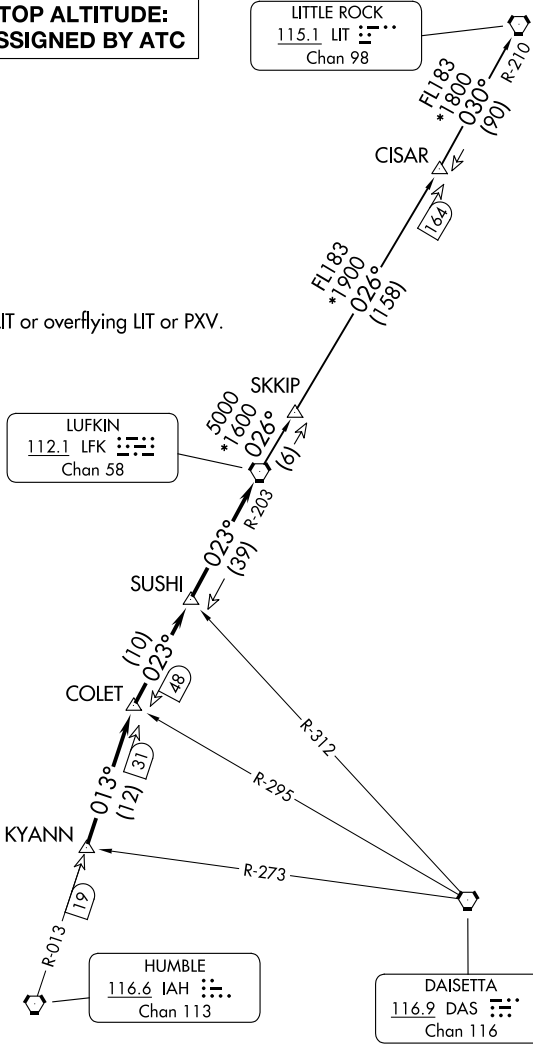
RADAR and DME required.

NOTE: For aircraft destined LIT or overflying LIT or PXV.

LUFKIN  
 112.1 LFK  
 Chan 58

HUMBLE  
 116.6 IAH  
 Chan 113

DAISETTA  
 116.9 DAS  
 Chan 116



**TAKEOFF MINIMUMS**  
 Rwy 17L, 35R: NA-Environmental.  
 Waterways 17, 35: NA-Air Traffic.  
 Rwy 17R, 35L: Standard.

NOTE: Chart not to scale.

(CONTINUED ON FOLLOWING PAGE)

SC-5, 19 MAR 2026 to 16 APR 2026

SC-5, 19 MAR 2026 to 16 APR 2026

# LUFKIN FOUR DEPARTURE

HOUSTON, TEXAS

# LUFKIN FOUR DEPARTURE



## DEPARTURE ROUTE DESCRIPTION

TAKEOFF ALL RUNWAYS: When entering controlled airspace, climb on assigned heading for RADAR vectors to KYANN INT. Maintain ATC assigned altitude. Expect filed altitude 10 minutes after departure, thence. . .

. . . on IAH R-013 to COLET INT, then on depicted route to LFK VORTAC.

LITTLE ROCK TRANSITION (LFK4.LIT): From over LFK VORTAC on LFK R-026 to CISAR, then on LIT R-210 to LIT VORTAC.

SC-5, 19 MAR 2026 to 16 APR 2026

SC-5, 19 MAR 2026 to 16 APR 2026