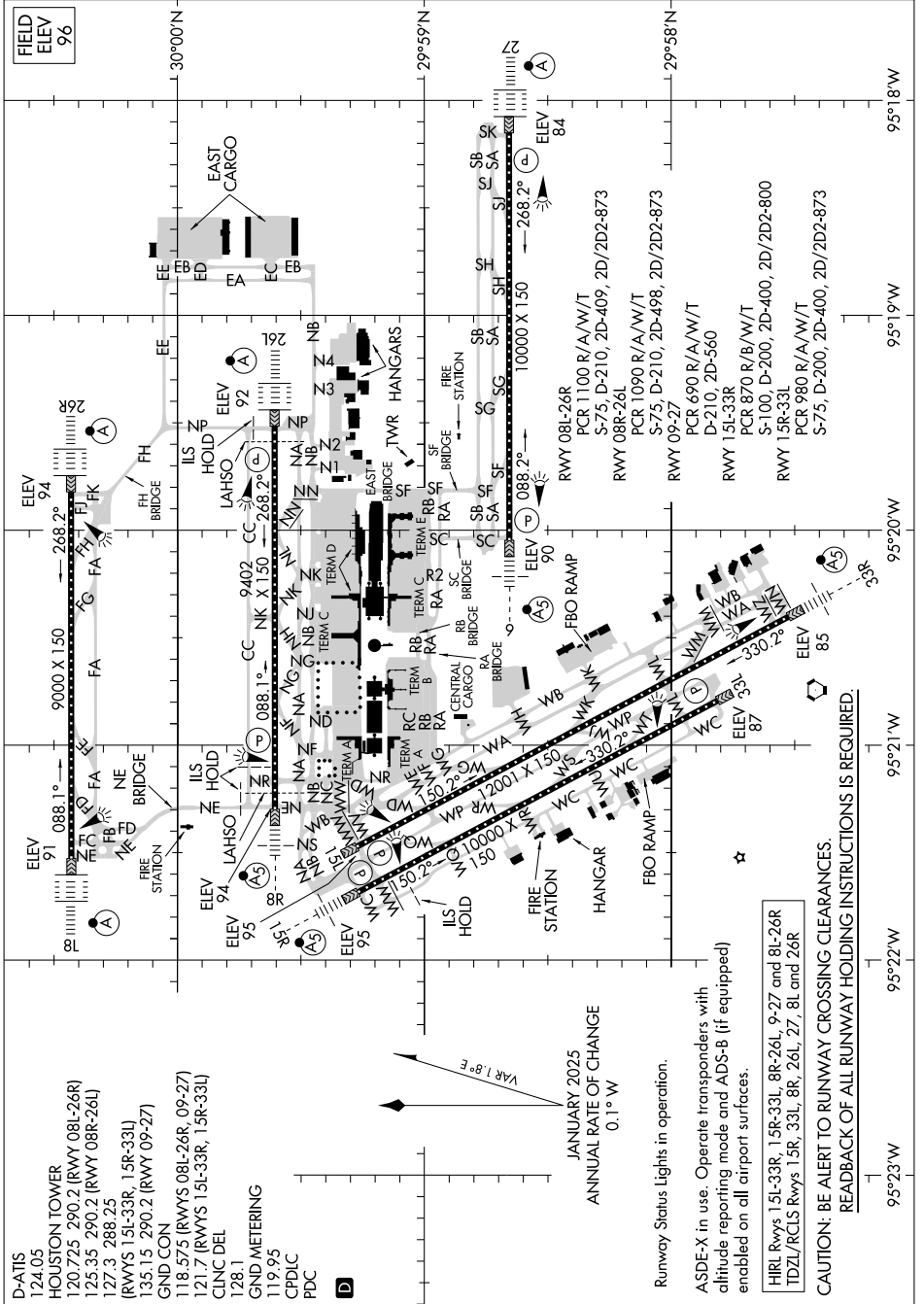


AIRPORT DIAGRAM

AL-5461 (FAA)

GEORGE BUSH INTCNL/HOUSTON (IAH)
HOUSTON, TEXAS

SC-5, 19 MAR 2026 to 16 APR 2026



AIRPORT DIAGRAM

HOUSTON, TEXAS
GEORGE BUSH INTCNL/HOUSTON (IAH)

SC-5, 19 MAR 2026 to 16 APR 2026

CAUTION: BE ALERT TO RUNWAY CROSSING CLEARANCES.
READBACK OF ALL RUNWAY HOLDING INSTRUCTIONS IS REQUIRED

HIRL Runways 15L-33R, 15R-33L, 8R-26L, 9-27 and 8L-26R
TDZ/RCLS Runways 15R, 33L, 8R, 26L, 27, 8L and 26R

Runway Status Lights in operation.

ASDE-X in use. Operate transponders with altitude reporting mode and ADS-B (if equipped) enabled on all airport surfaces.

JANUARY 2025
ANNUAL RATE OF CHANGE
0.1° W

VAR 1.8° E

- D-ATIS 124.05
- HOUSTON TOWER 120.725 290.2 (RWY 08L-26R)
- 125.35 290.2 (RWY 08R-26L)
- 127.3 288.25
- (RWYS 15L-33R, 15R-33L)
- 135.15 290.2 (RWY 09-27)
- GND CON 118.575 (RWYS 08L-26R, 09-27)
- 121.7 (RWYS 15L-33R, 15R-33L)
- CLNC DEL 128.1
- GND METERING 119.95
- CPDIC
- PDC