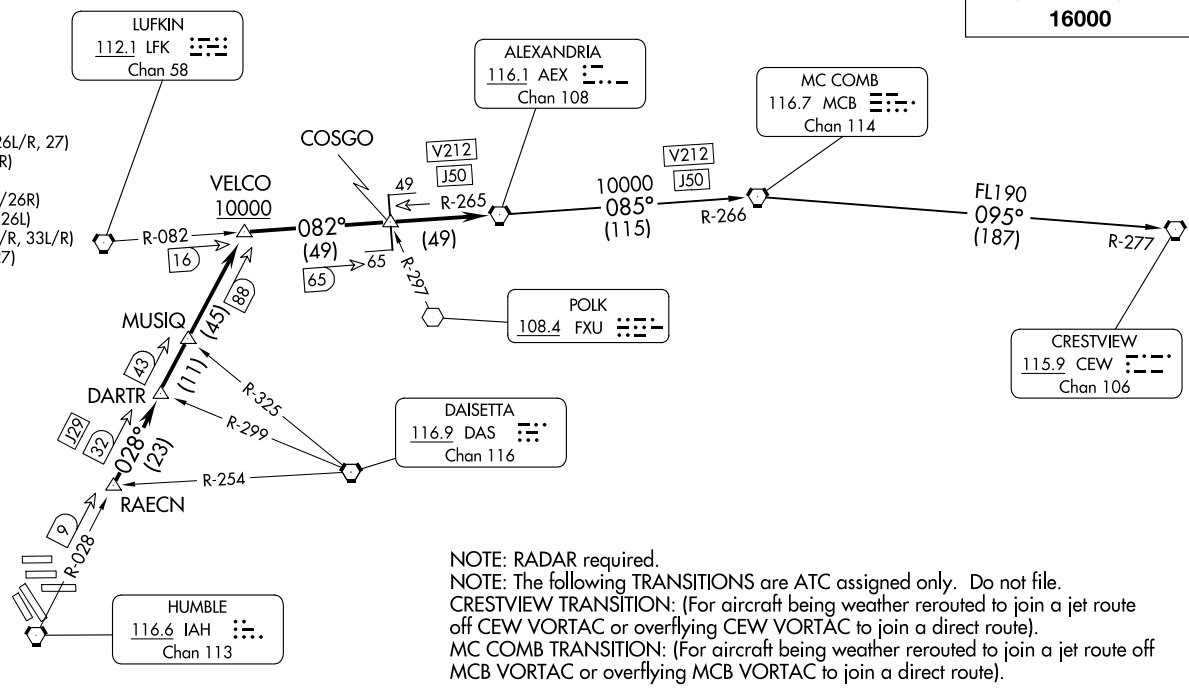


ALEXANDRIA THREE DEPARTURE
 (AEX3.AEX) 07OCT21

ALEXANDRIA THREE DEPARTURE
 (AEX3.AEX) 25331

HOUSTON DEP CON
 132.25 285.425
 D-ATIS
 124.05
 CLNC DEL
 128.1
 CPDLC
 GND CON
 118.575 (8L/R, 9, 26L/R, 27)
 121.7 (15L/R, 33L/R)
 HOUSTON TOWER
 120.725 290.2 (8L/26R)
 125.35 290.2 (8R/26L)
 127.3 288.25 (15L/R, 33L/R)
 135.15 290.2 (9/27)

**TOP ALTITUDE:
 16000**



TAKEOFF MINIMUMS
 Rwy 8L/R, 9, 15L/R, 26L/R, 27, 33L/R: Standard.

NOTE: RADAR required.
 NOTE: The following TRANSITIONS are ATC assigned only. Do not file.
 CRESTVIEW TRANSITION: (For aircraft being weather rerouted to join a jet route off CEW VORTAC or overflying CEW VORTAC to join a direct route).
 MC COMB TRANSITION: (For aircraft being weather rerouted to join a jet route off MCB VORTAC or overflying MCB VORTAC to join a direct route).

NOTE: Chart not to scale.

(CONTINUED ON FOLLOWING PAGE)

HOUSTON, TEXAS
 GEORGE BUSH INTLNTL/HOUSTON (IAH)

AL-5461 (FAA)
 GEORGE BUSH INTLNTL/HOUSTON (IAH)
 HOUSTON, TEXAS

ALEXANDRIA THREE DEPARTURE



DEPARTURE ROUTE DESCRIPTION

TAKEOFF ALL RUNWAYS: Climb on assigned heading for RADAR vectors to RAECN INT, maintain 16000. Expect filed altitude 10 minutes after departure, thence. . . .

. . . .on IAH R-028 to VELCO INT, cross VELCO INT at or above 10000, then right turn on LFK R-082 and AEX R-265 to AEX VORTAC.

CRESTVIEW TRANSITION (AEX3.CEW): From over AEX VORTAC on AEX R-085 and MCB R-266 to MCB VORTAC, then on MCB R-095 and CEW R-277 to CEW VORTAC.

MC COMB TRANSITION (AEX3.MCB): From over AEX VORTAC on AEX R-085 and MCB R-266 to MCB VORTAC.

SC-5, 19 MAR 2026 to 16 APR 2026

SC-5, 19 MAR 2026 to 16 APR 2026