

BNDTO SIX DEPARTURE (RNAV)  
(BNDTO6, BNDTO) 11 JUL 24

HOUSTON, TEXAS  
GEORGE BUSH INTL/NL/HOUSTON (IAH)

HOUSTON DEP CON  
126.675 339.8  
D-ATIS  
124.05  
CLNC DEL  
128.1  
CPDLC  
GND CON  
118.575 (Rwys 8L/R, 26L/R, 9, 27)  
121.7 (Rwys 15L/R, 33L/R)  
HOUSTON TOWER  
120.725 290.2 (Rwys 8L, 26R)  
125.35 290.2 (Rwys 8R, 26L)  
127.3 288.25 (Rwys 15L/R, 33L/R)  
135.15 290.2 (Rwys 9, 27)

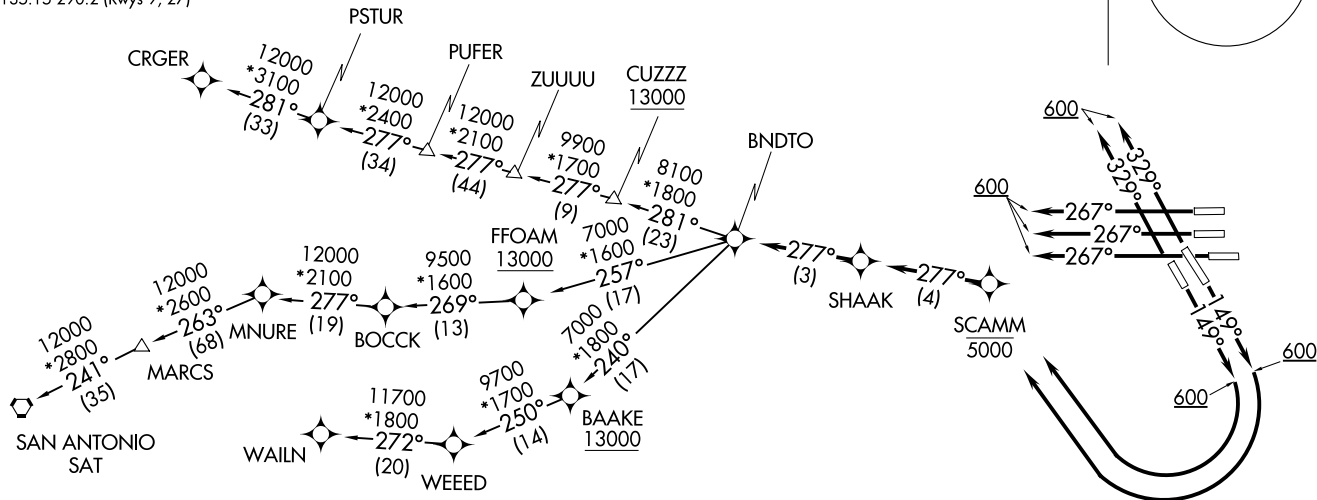
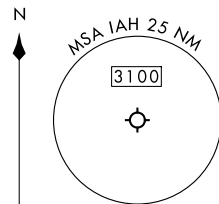
RNAV 1 - DME/DME/IRU or GPS required.  
RADAR required.  
RADAR required for non - GPS equipped aircraft.

**TOP ALTITUDE:  
16000**

**TAKEOFF MINIMUMS**

Rwys 15L/R, 26L/R, 27, 33L/R: Standard with minimum climb of 500'/NM to 1200.

NOTE: For use during west flow at IAH, for east flow file the PITZZ DEPARTURE.



(CONTINUED ON FOLLOWING PAGE)

NOTE: Chart not to scale.

(BNDTO6, BNDTO) 25051  
BNDTO SIX DEPARTURE (RNAV)

AL-5461 (FAA)

HOUSTON, TEXAS  
GEORGE BUSH INTL/NL/HOUSTON (IAH)



DEPARTURE ROUTE DESCRIPTION

TAKEOFF RUNWAYS 15L/R: Climb heading 149° to 600, then right turn direct to cross SCAMM at or below 5000, then on track 277° to SHAAK, thence . . . .

TAKEOFF RUNWAYS 26L/R, 27: Climb heading 267° to 600, expect RADAR vectors to SHAAK, thence . . . .

TAKEOFF RUNWAYS 33L/R: Climb heading 329° to 600, expect RADAR vectors to SHAAK, thence . . . .

. . . . on track 277° to BNDTO, then on (transition). Maintain 16000.  
Expect filed altitude 10 minutes after departure.

CRGER TRANSITION (BNDTO6.CRGER)

MNURE TRANSITION (BNDTO6.MNURE)

SAN ANTONIO TRANSITION (BNDTO6.SAT)

WAILN TRANSITION (BNDTO6.WAILN)

SC-5, 19 MAR 2026 to 16 APR 2026

SC-5, 19 MAR 2026 to 16 APR 2026